

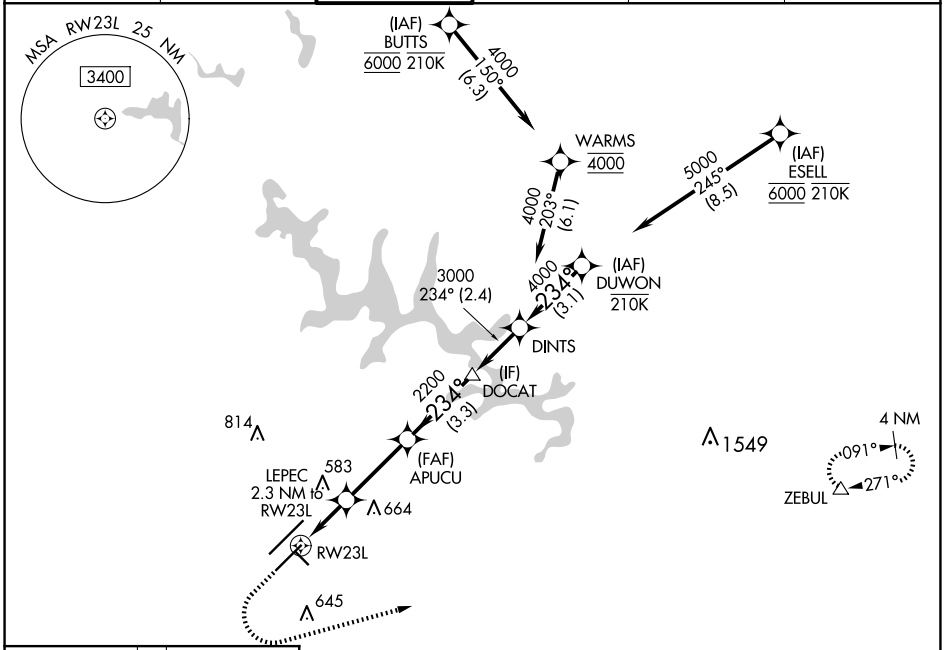
WAAS CH <b>65713</b> <b>W23B</b>	APP CRS <b>234°</b>	Rwy Idg TDZE <b>435</b> Apt Elev <b>435</b>	<b>7500</b>
--	------------------------	---	-------------

# RNAV (GPS) Y RWY 23L

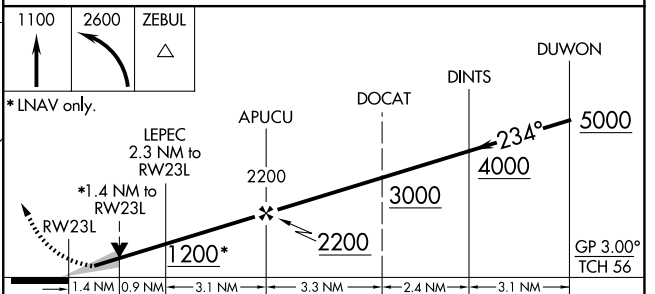
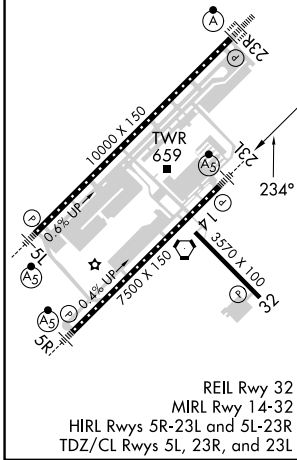
RALEIGH-DURHAM INTL (RDU)

RNP APCH-GPS.	MALSR 	MISSED APPROACH: Climb to 1100 then climbing left turn to 2600 direct ZEBUL and hold.
<p><b>▼</b> Simultaneous approach authorized. LNAV procedure NA during simultaneous operations. For uncompensated Baro-VNAV systems, LNAV/VNAV NA below -1.2°C or above 54°C. Use of FD or AP required during simultaneous operations. For inop ALS, increase LNAV Cat C/D visibility to 1 3/8 SM.</p>		

D-ATIS <b>123.8</b>	RALEIGH APP CON <b>127.675 307.9</b>	RALEIGH TOWER <b>127.45 257.8</b>	GND CON <b>121.9 348.6</b>	CINC DEL <b>120.1</b>	CPDLC
------------------------	---	--------------------------------------	-------------------------------	--------------------------	-------



ELEV 435	<b>D</b>	TDZE 435
----------	----------	----------



CATEGORY	A	B	C	D
LPV DA		635/18	200 (200-1/2)	
LNAV/VNAV DA		820/35	385 (400-5/8)	
LNAV MDA	920/24	485 (500-1/2)	920/50	485 (500-1)
<b>C</b> CIRCLING	960-1	525 (600-1)	1020-1 1/2 585 (600-1 1/2)	1180-2 1/2 745 (800-2 1/2)

SE-2, 15 MAY 2025 to 12 JUN 2025

SE-2, 15 MAY 2025 to 12 JUN 2025