

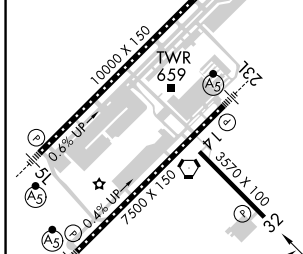
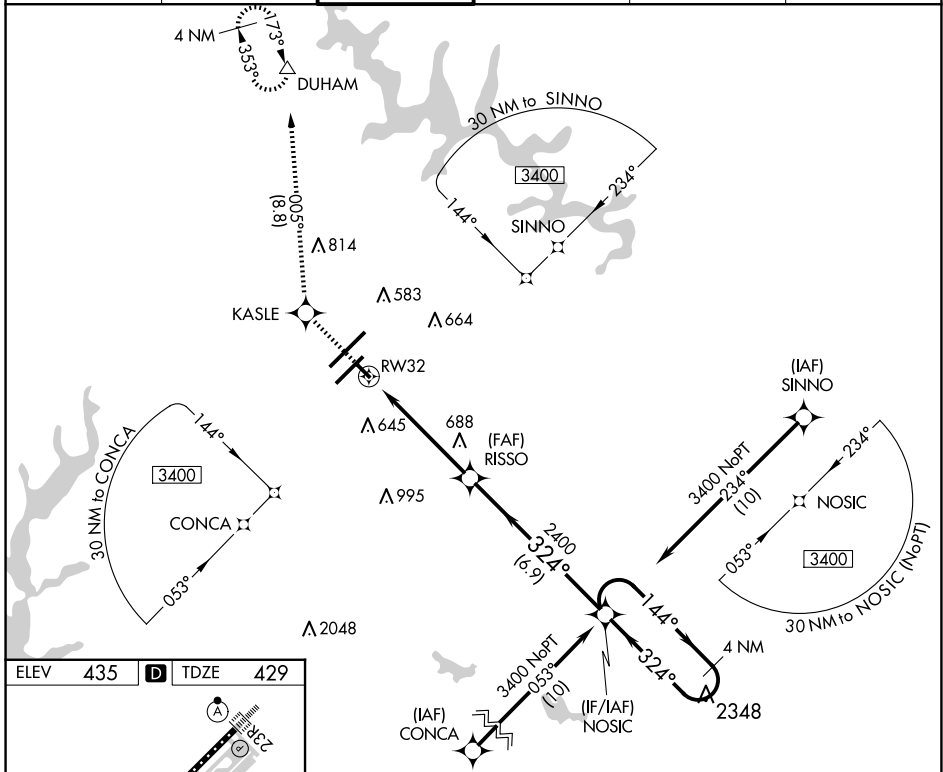
APP CRS	Rwy Idg	3570
324°	TDZE	429
	Apt Elev	435

RNAV (GPS) RWY 32

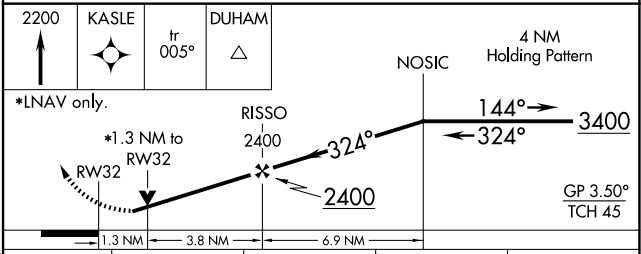
RALEIGH-DURHAM INTL (RDU)

RNP APCH.	Rwy 32 helicopter visibility reduction below 3/4 SM NA. Baro-VNAV NA below -15°C (5°F) or above 48°C (118°F).	MISSED APPROACH: Climb to 2200 direct KASLE and on track 005° to DUHAM and hold.
-----------	--	--

D-ATIS	RALEIGH APP CON	RALEIGH TOWER	GND CON	CLNC DEL	CPDLC
123.8	127.675 307.9	127.45 257.8	121.9 348.6	120.1	



ELEV	435	TDZE	429
REIL Rwy 32			
MIRL Rwy 14-32			
HIRL Rwys 5R-23L and 5L-23R			
TDZ/CL Rwys 23R, 23L and 5L			



CATEGORY	A	B	C	D
LNAV/VNAV	DA	820-1 1/4	391 (400-1 1/4)	NA
LNAV MDA	1000-1	571 (600-1)	1000-1 1/2	571 (600-1 1/2)
CIRCLING	1000-1 1/4	565 (600-1 1/4)	1040-1 3/4	605 (700-1 3/4)

SE-2, 15 MAY 2025 to 12 JUN 2025

SE-2, 15 MAY 2025 to 12 JUN 2025