

LOC/DME I-LEI 108.5 Chan 22	APP CRS 234°	Rwy Idg 7500 TDZE 435 Apt Elev 435
---	------------------------	---

ILS or LOC RWY 23L

RALEIGH-DURHAM INTL (RDU)

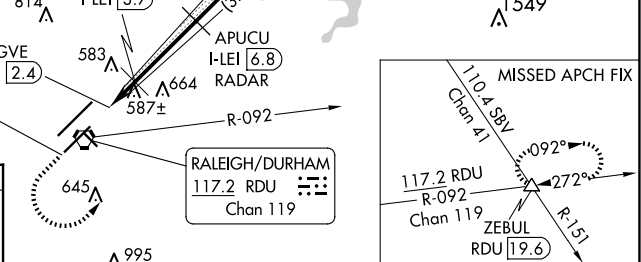
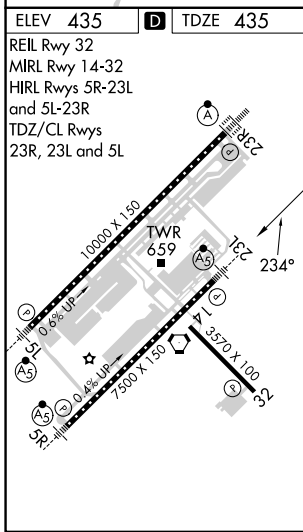
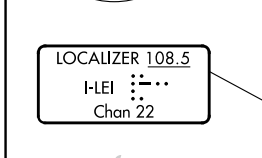
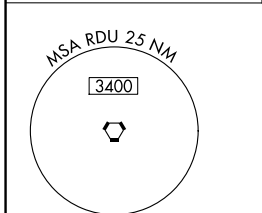
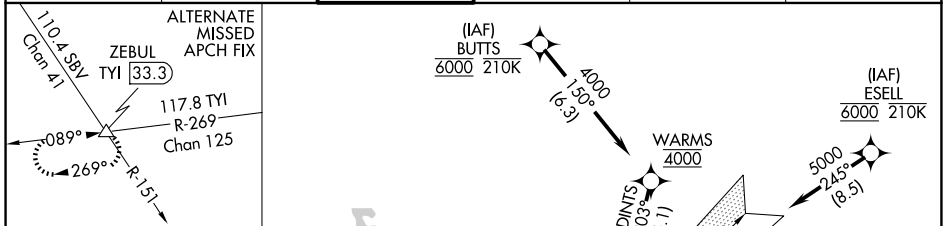
RNAV 1-DME/DME/IRU or GPS or RADAR required for procedure entry.
DME required for LOC only.

⚠ Simultaneous approach authorized. For inop ALS, increase S-ILS 23L all Cats visibility to RVR 5500. Localizer unusable for coupled approaches below 1100 or within 2 NM of threshold.



MISSED APPROACH: Climb to 1100 then climbing left turn to 2600 on heading 050° and RDU VORTAC R-092 to ZEBUL INT and hold.

D-ATIS 123.8	RALEIGH APP CON 127.675 307.9	RALEIGH TOWER 127.45 257.8	GND CON 121.9 348.6	CLNC DEL 120.1	CPDLC
------------------------	---	---	-------------------------------	--------------------------	-------



ELEV 435	TDZE 435	ZEBUL Localizer unusable from 1 NM from threshold.		DUWON I-LEI 15.6	
REIL Rwy 32	MIRL Rwy 14-32	APUCU I-LEI 6.8 RADAR	DOCAT I-LEI 10 RADAR	DINTS I-LEI 12.4	
HIRL Rwys 5R-23L and 5L-23R	TDZ/CL Rwys 23R, 23L and 5L	LEPEC I-LEI 3.7	2200	3000	
* LOC only.		BEGVE I-LEI 2.4	1200*	2200	
CATEGORY		A	B	C	D
S-ILS 23L		806/35		371 (400-5/8)	
S-LOC 23L		840/40		405 (500-3/4)	
CIRCLING		960-1 1/4	525 (600-1 1/4)	1020-1 1/2 585 (600-1 1/2)	1180-2 1/2 745 (800-2 1/2)

SE-2, 15 MAY 2025 to 12 JUN 2025

SE-2, 15 MAY 2025 to 12 JUN 2025