

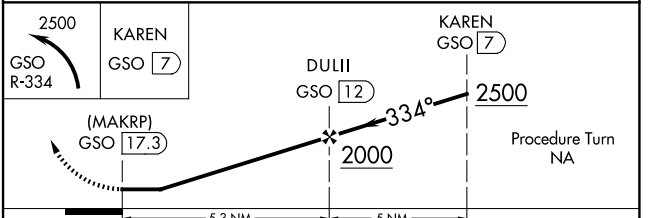
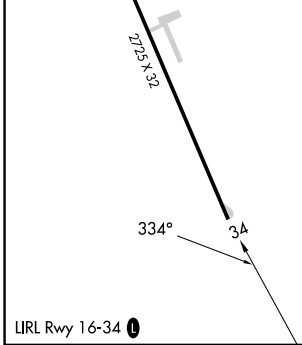
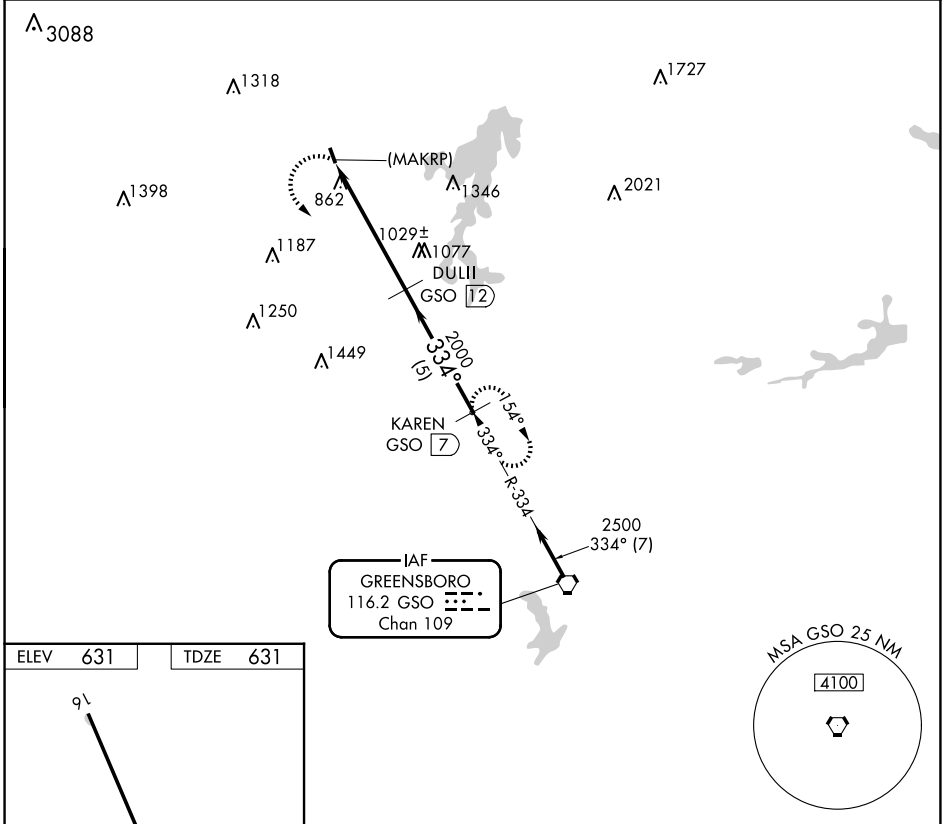
VORTAC GSO	APP CRS	Rwy Idg TDZE	2725
116.2	334°	631	
Chan 109		Apt Elev	631

VOR/DME or GPS RWY 34

MEADOW BROOK FLD (N63)

NA Use Reidsville altimeter setting. Procedure NA at night. **MISSED APPROACH:** Climbing left turn to 2500 via GSO R-334 to KAREN GSO 7 DME and hold.

SIF AWOS-3 119.775	GREENSBORO APP CON 124.35 269.225	UNICOM 123.0 (CTAF) 0
------------------------------	---	---------------------------------



CATEGORY	A	B	C	D
S-34	1400-1 769 (800-1)	1400-1¼ 769 (800-1¼)	NA	
CIRCLING	1400-1 769 (800-1)	1440-1¼ 809 (900-1¼)	NA	

SE-2, 15 MAY 2025 to 12 JUN 2025

SE-2, 15 MAY 2025 to 12 JUN 2025