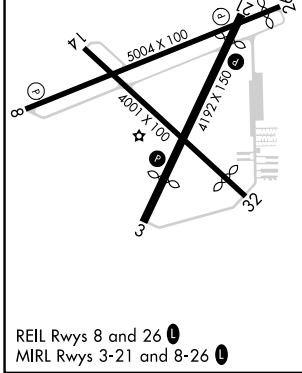
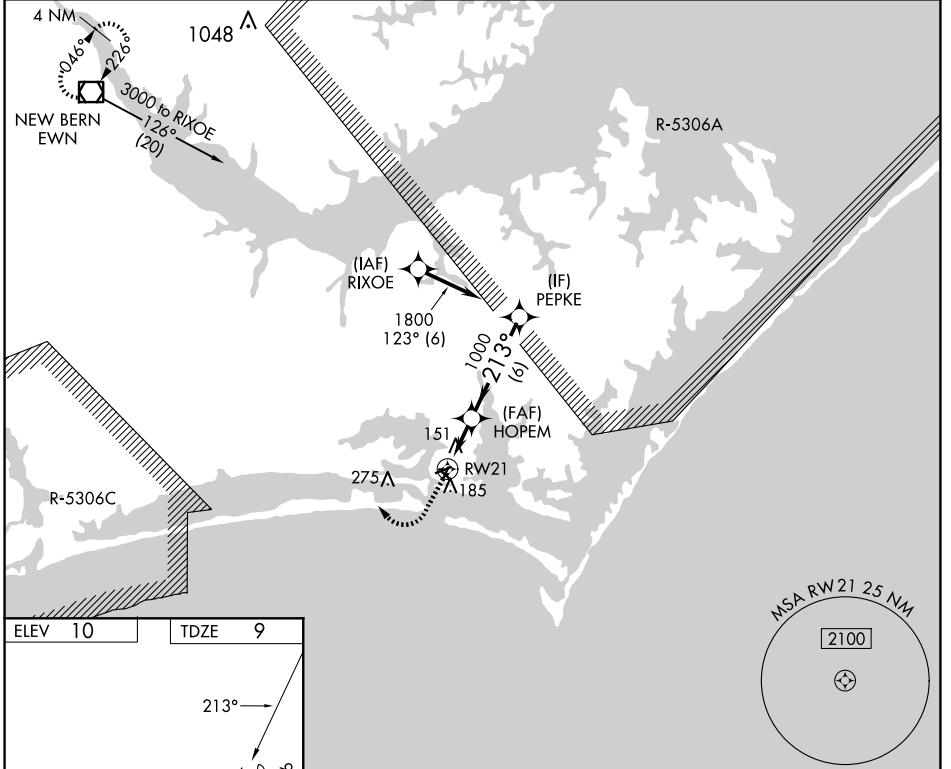


APP CRS 213°	Rwy Idg TDZE Apt Elev	3676 9 10
------------------------	-----------------------------	--------------------------------------

RNAV (GPS) RWY 21

MICHAEL J SMITH FLD (MR.H)

RNP APCH - GPS.		MISSED APPROACH: Climb to 500 then climbing right turn to 3000 direct EWN VOR/DME and hold.	
ASOS 135,375	CHERRY POINT APP CON 132,575 299.6	CLNC DEL 125,65	UNICOM 122.8 (CTAF) 0



ELEV 10	TDZE 9	500		3000		EWN	VGSI and descent angles not coincident (VGSI Angle 4.00/TCH 54).	
		HOPEM		PEPKE		1800		
RW21		0.8		2.2 NM		6 NM		
CATEGORY	A	B	C	D				
LNAV MDA	420-1	411 (500-1)	NA					
CIRCLING	540-1	530 (600-1)	NA					

SE-2, 15 MAY 2025 to 12 JUN 2025

SE-2, 15 MAY 2025 to 12 JUN 2025