

RNAV (GPS) RWY 23

BERKELEY COUNTY (MKS)

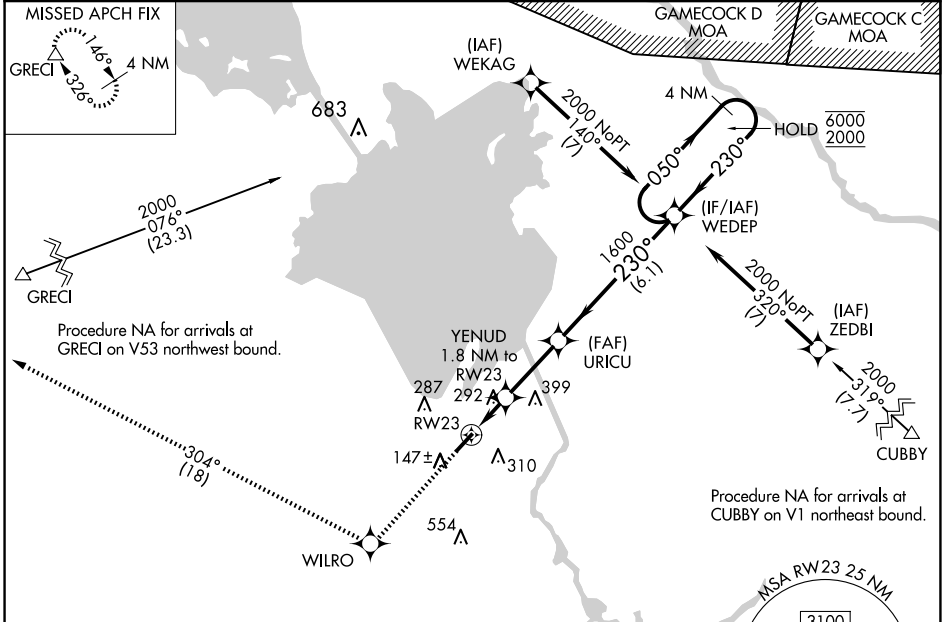
APP CRS	Rwy Idg	5001
230°	TDZE	74
	Apt Elev	74

RNP APCH - GPS.

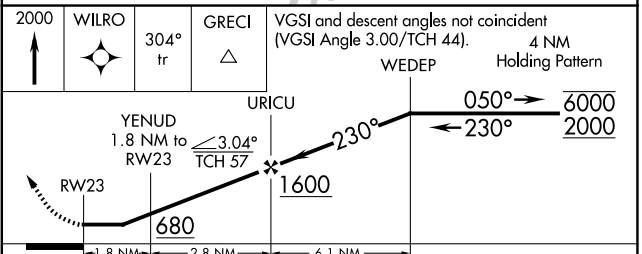
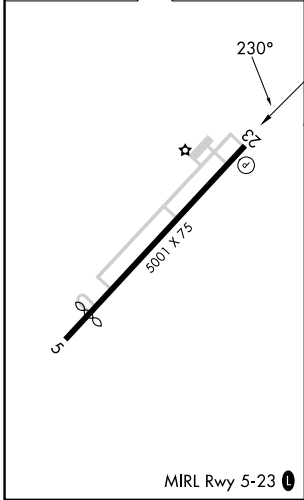
Procedure NA at night. Rwy 23 helicopter visibility reduction below 1 SM NA.
 When local altimeter setting not received, use Charleston AFB/Intl altimeter setting: increase all MDAs 60 feet and increase LNAV visibility Cat C and D and Circling visibility Cat C and D ¼ SM.

MISSED APPROACH: Climb to 2000 direct WILRO and on track 304° to GRECI and hold.

AWOS-3 119.175	CHARLESTON APP CON 121.275 379.925	UNICOM 123.05 (CTAF) 0
--------------------------	--	---



ELEV 74	TDZE 74
----------------	----------------



CATEGORY	A	B	C	D
LNAV MDA	560-1	486 (500-1)	560-1 ³ / ₈	486 (500-1 ³ / ₈)
CIRCLING	580-1 506 (600-1)	620-1 546 (600-1)	700-1 ³ / ₄ 626 (700-1 ³ / ₄)	860-2 ¹ / ₂ 786 (800-2 ¹ / ₂)

SE-2, 15 MAY 2025 to 12 JUN 2025

SE-2, 15 MAY 2025 to 12 JUN 2025