

WAAS CH <b>45836</b> <b>W22A</b>	APP CRS <b>223°</b>	Rwy Idg TDZE Apt Elev	<b>4505</b> <b>90</b> <b>92</b>
--	------------------------	-----------------------------	---------------------------------------

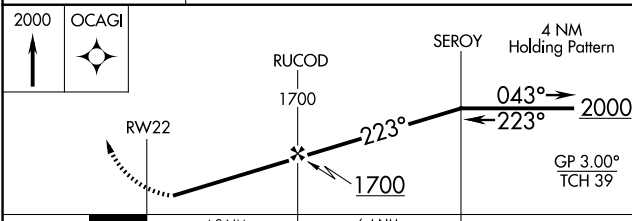
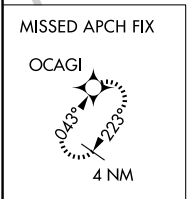
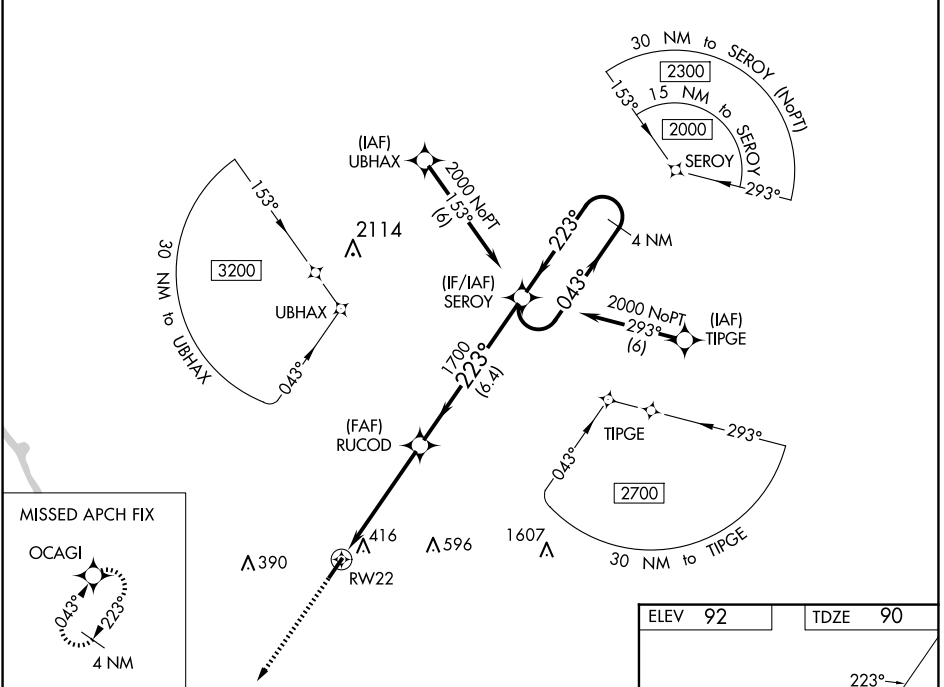
# RNAV (GPS) RWY 22

MARION COUNTY (MAO)

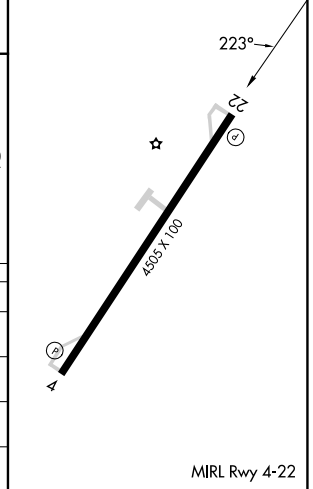
**⚠** Baro-VNAV NA when using Florence altimeter setting. For uncompensated Baro-VNAV systems, LNAV/VNAV NA below -8°C (18°F) or above 54°C (130°F). DME/DME RNP-0.3 NA. Helicopter visibility reduction below ¼ SM NA. When local altimeter setting not received, use Florence altimeter setting and increase all DA 53 feet and all visibilities ¼ mile, increase all MDA 60 feet and all Cat C/D visibilities ¼ mile.

**MISSED APPROACH:**  
Climb to 2000 direct OCAGI and hold.

AWOS-3PT <b>119.875</b>	FLORENCE APP CON * <b>135.25 316.15</b>	UNICOM <b>122.8</b> (CTAF)
----------------------------	--	-------------------------------



ELEV 92	TDZE 90
---------	---------



CATEGORY	A	B	C	D
LPV DA		396-1	306 (400-1)	
LNAV/VNAV DA		577-1½	487 (500-1½)	
LNAV MDA	680-1	590 (600-1)	680-¾	590 (600-¾)
<b>C</b> CIRCLING	720-1	628 (700-1)	720-¾ 628 (700-¾)	960-¾ 868 (900-¾)

SE-2, 15 MAY 2025 to 12 JUN 2025

SE-2, 15 MAY 2025 to 12 JUN 2025