

WAAS CH <b>86816</b> <b>W06A</b>	APP CRS <b>065°</b>	Rwy Idg TDZE Apt Elev	<b>5899</b> <b>470</b> <b>486</b>
----------------------------------------	------------------------	-----------------------------	-----------------------------------------

# RNAV (GPS) RWY 6

LANCASTER COUNTY-MC WHIRTER FLD (LKR)

**⚠** When VGSI inoperative, Circling Rwy 24 NA at night. Baro-VNAV NA when using Rock Hill altimeter setting. For uncompensated Baro-VNAV systems, LNAV/VNAV NA below -15°C (5°F) or above 48°C (118°F). DME/DME RNP -0.3 NA. When local altimeter setting not received, use Rock Hill altimeter setting and increase LPV DA 69 feet, LNAV/VNAV DA 98 feet and all MDA 80 feet, and increase LPV, LNAV/VNAV all Cats, LNAV and Circling Cats C and D visibilities ¼ mile. VDP NA when using Rock Hill altimeter setting.

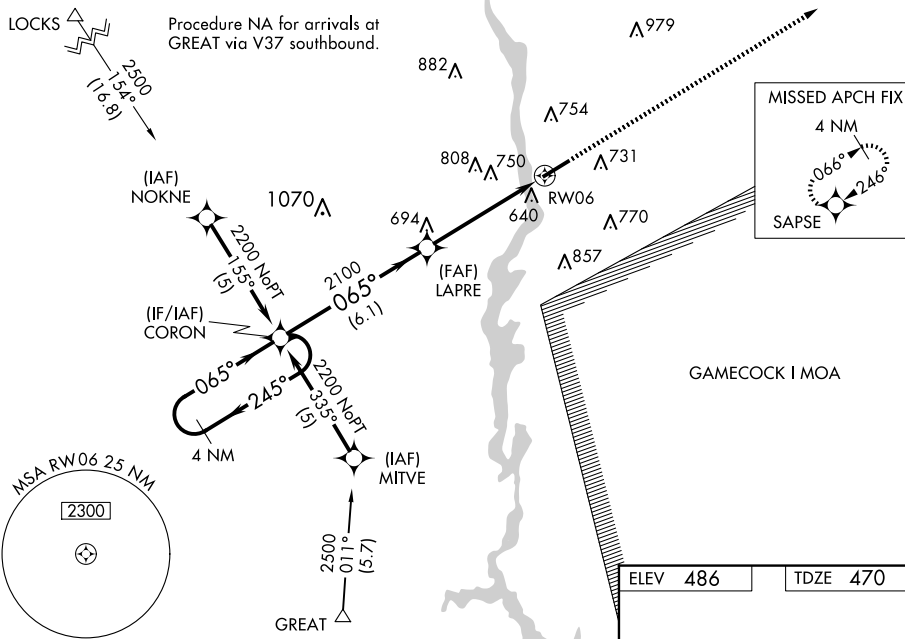
**MISSED APPROACH:**  
Climb to 2500 direct SAPSE and hold.

AWOS-3  
**120.825**

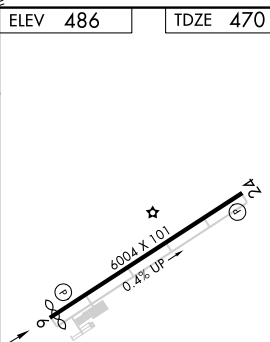
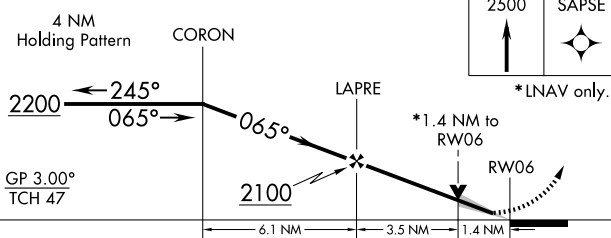
CHARLOTTE APP CON  
**120.05 307.8**

GCO  
**121.725**

UNICOM  
**122.725 (CTAF) 0**



ELEV 486	TDZE 470
----------	----------



CATEGORY	A	B	C	D
LPV DA		670-¾	200 (200-¾)	
LNAV/VNAV DA		993-2	523 (600-2)	
LNAV MDA	940-1	470 (500-1)	940-1½ 470 (500-1½)	940-1½ 470 (500-1½)
CIRCLING	1040-1 554 (600-1)	1060-1 574 (600-1)	1120-1¾ 634 (700-1¾)	1160-2½ 674 (700-2½)

MIRL Rwy 6-24 0  
REIL Rwy 6 and 24 0

SE-2, 15 MAY 2025 to 12 JUN 2025

SE-2, 15 MAY 2025 to 12 JUN 2025