

WAAS	APP CRS	Rwy Idg	<b>5342</b>
CH <b>97421</b>	<b>053°</b>	TDZE	<b>124</b>
<b>W05A</b>		Apt Elev	<b>125</b>

# RNAV (GPS) RWY 5

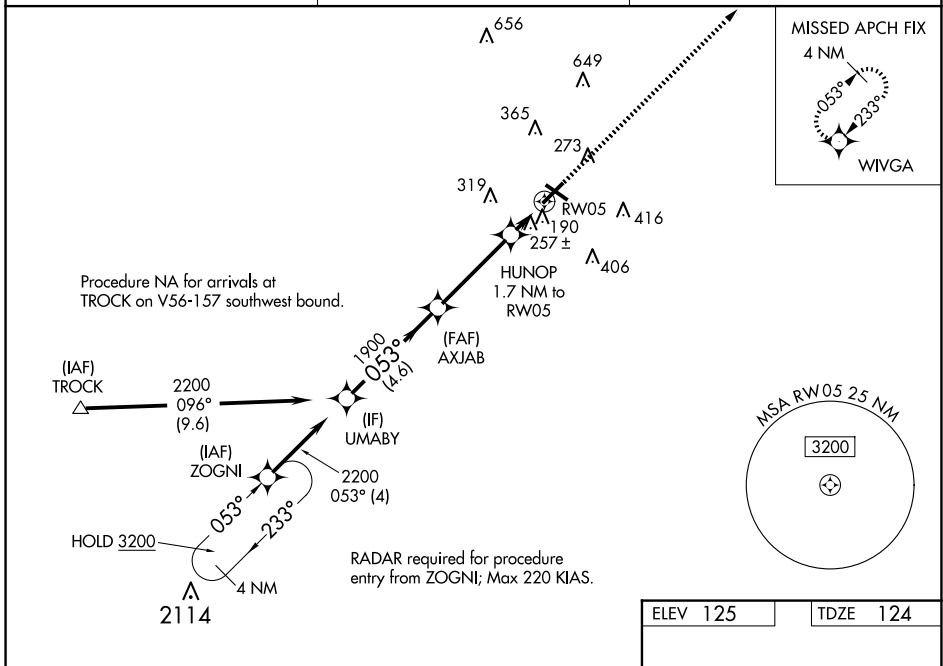
LUMBERTON RGNL (LBT)

RNP APCH - GPS.

**⚠** When local altimeter setting not received, use Maxton altimeter setting: increase LPV DA to 383 feet; LNAV/VNAV DA to 594 feet and all visibility ¼ SM; increase all MDAs 60 feet and LNAV visibility Cat C and Circling Cat C ¼ SM. Baro-VNAV and VDP NA when using Maxton altimeter setting. Circling Rwy 13, 31 NA at night. For uncompensated Baro-VNAV systems, LNAV/VNAV NA below -15°C or above 54°C.

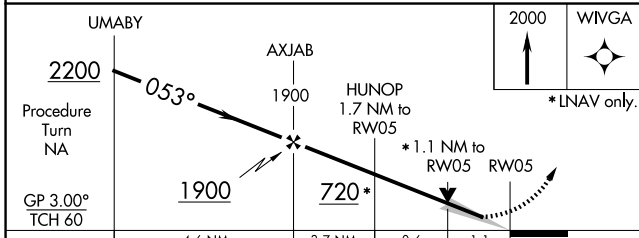
**MISSED APPROACH:**  
Climb to 2000 direct WIVGA and hold.

<b>ASOS</b> <b>134.775</b>	<b>FAYETTEVILLE APP CON</b> <b>133.0 290.25</b>	<b>UNICOM</b> <b>122.8 (CTAF)</b>
-------------------------------	--	--------------------------------------



SE-2, 15 MAY 2025 to 12 JUN 2025

SE-2, 15 MAY 2025 to 12 JUN 2025



ELEV 125	TDZE 124
----------	----------

CATEGORY	A	B	C	D
LPV DA	327-¾	203 (300-¾)		NA
LNAV/VNAV DA	538-1½	414 (500-1½)		NA
LNAV MDA	520-1	396 (400-1)	520-1½ 396 (400-1½)	NA
CIRCLING	660-1	535 (600-1)	720-1½ 595 (600-1½)	NA

