

WAAS CH <b>87140</b> <b>W03A</b>	APP CRS <b>029°</b>	Rwy Idg TDZE Apt Elev	<b>5000</b> <b>349</b> <b>364</b>
--	------------------------	-----------------------------	---

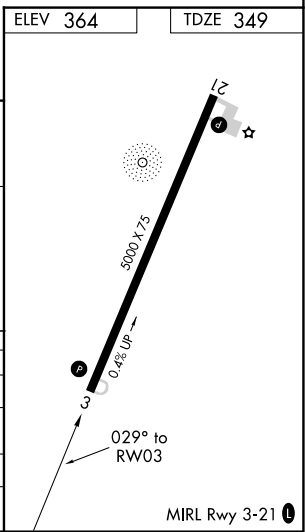
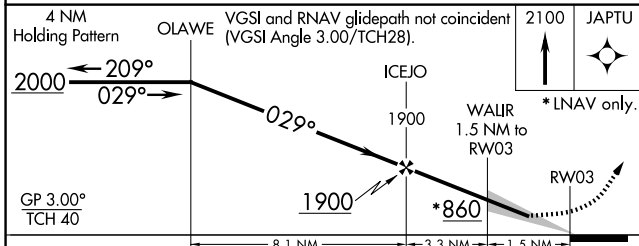
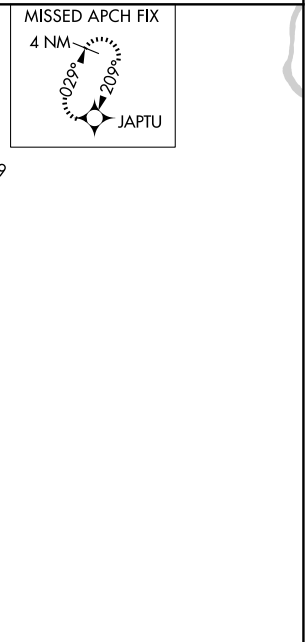
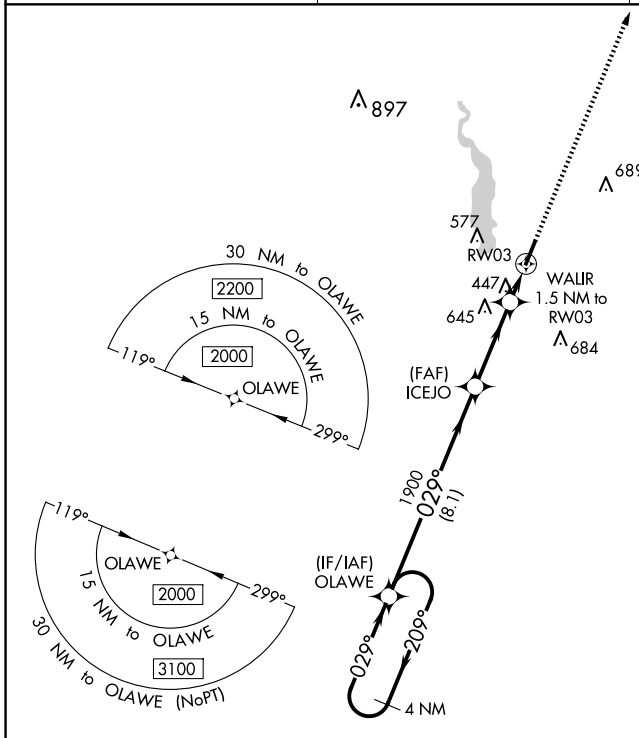
# RNAV (GPS) RWY 3

HARTSVILLE RGNL (HVS)

▼ For uncompensated Baro-VNAV systems, LNAV/VNAV NA below -9°C (15°F) or above 54°C (130°F). DME/DME RNP-0.3 NA.

MISSED APPROACH: Climb to 2100 direct JAPTU and hold.

AWOS-3 <b>118.225</b>	SHAW APP CON ★ <b>125.4 318.1</b>	UNICOM <b>122.8 (CTAF) 0</b>
--------------------------	--------------------------------------	---------------------------------



CATEGORY	A	B	C	D
LPV DA	599-1	250 (300-1)		NA
LNAV/VNAV DA	599-1	250 (300-1)		NA
LNAV MDA	700-1	351 (400-1)		NA
<b>C</b> CIRCLING	800-1 436 (500-1)	840-1 476 (500-1)	960-1½ 596 (600-1½)	NA

SE-2, 15 MAY 2025 to 12 JUN 2025

SE-2, 15 MAY 2025 to 12 JUN 2025