

WAAS CH 63009 W24A	APP CRS 240°	Rwy Idg 5501 TDZE 523 Apt Elev 526
--	------------------------	---

RNAV (GPS) RWY 24

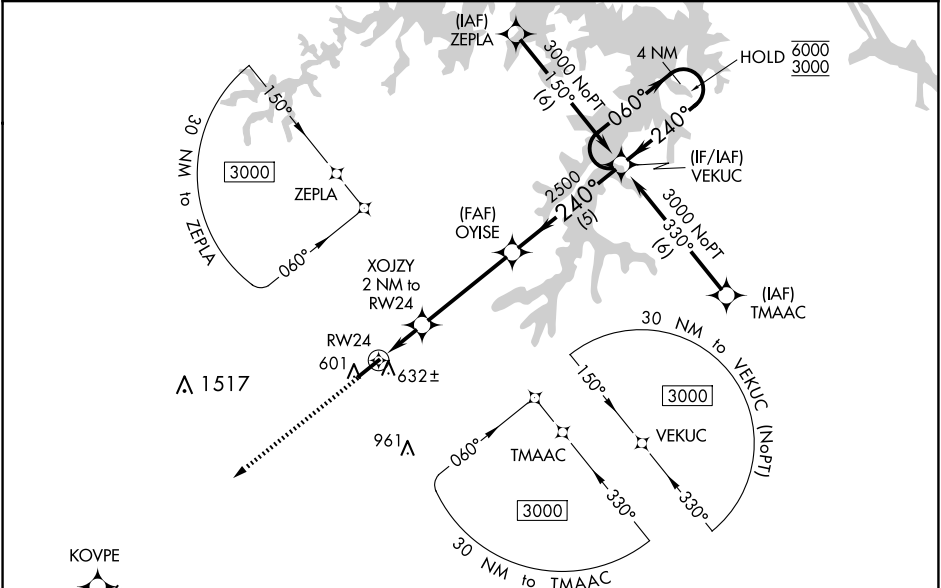
HENDERSON/OXFORD (HNZ)

RNP APCH - GPS.

▼ For uncompensated Baro-VNAV systems, LNAV/VNAV NA below -16°C or above 54°C. Baro-VNAV and VDP NA when using Roxboro altimeter setting. Rwy 24 helicopter visibility reduction below ¾ SM NA. When local altimeter setting not received, use Roxboro altimeter setting and increase LPV DA to 837 feet and all visibilities ¼ SM; increase LNAV/VNAV DA to 877 feet and all visibilities ¼ SM; increase all MDAs 80 feet and LNAV visibility Cat C/D ¾ SM, and Circling visibility Cat C/D ¼ SM.

MISSED APPROACH:
Climb to 3000 direct KOVPE and hold.

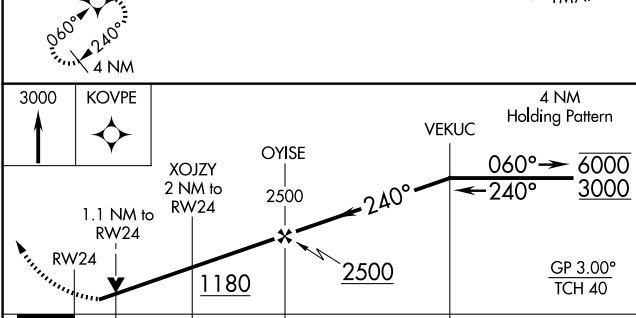
AWOS-3 118.625	RALEIGH APP CON 132.35 256.9	UNICOM 122.8(CTAF)
--------------------------	--	------------------------------



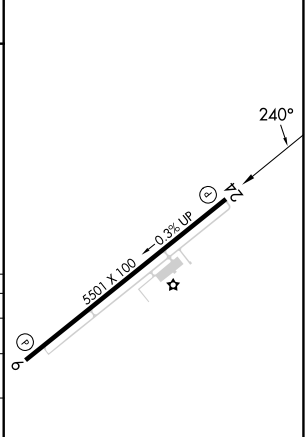
SE-2, 15 MAY 2025 to 12 JUN 2025

SE-2, 15 MAY 2025 to 12 JUN 2025

ELEV 526	TDZE 523
----------	----------



CATEGORY	A	B	C	D
LPV DA		773-¾	250 (300-¾)	
LNAV/VNAV DA		813-7/8	290 (300-7/8)	
LNAV MDA		900-1	377 (400-1)	
CIRCLING	960-1	980-1	1100-1½	1280-2½
	434 (500-1)	454 (500-1)	574 (600-1½)	754 (800-2½)



REIL Rwy 6
MIRL Rwy 6-24