

WAAS CH 45709 W06A	APP CRS 060°	Rwy Idg 5501 TDZE 526 Apt Elev 526
---------------------------------	------------------------	---

RNAV (GPS) RWY 6

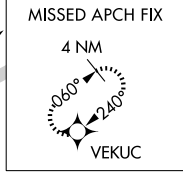
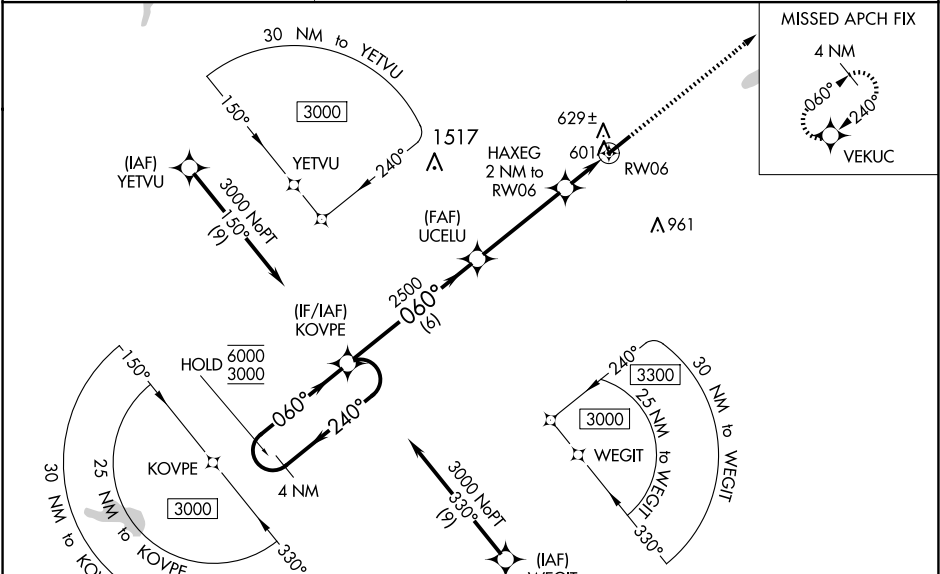
HENDERSON/OXFORD (HNZ)

RNP APCH - GPS.

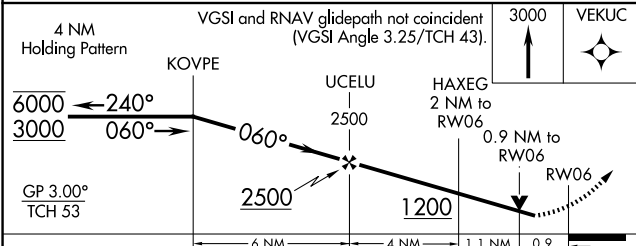
▼ For uncompensated Baro-VNAV systems, LNAV/VNAV NA below -16°C or above 54°C.
 ▲ When local altimeter setting not received, use Roxboro altimeter setting: increase all DA to 875 feet and all visibilities 1/8 SM; increase all MDA 80 feet and visibility Cats C and D 1/4 SM. Baro-VNAV and VDP NA when using Roxboro altimeter setting.
 Rwy 6 helicopter visibility reduction below 1/4 SM NA.

MISSED APPROACH: Climb to 3000 direct VEKUC and hold.

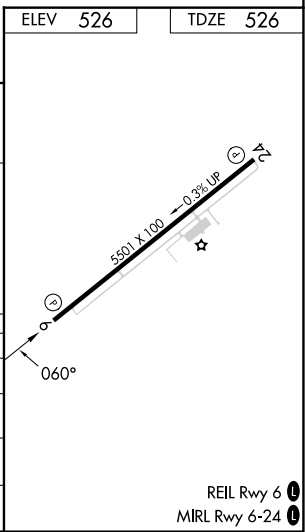
AWOS-3 118.625	RALEIGH APP CON 132.35 256.9	UNICOM 122.8(CTAF) 0
--------------------------	--	--------------------------------



ELEV 526	TDZE 526
----------	----------



CATEGORY	A	B	C	D
LPV DA		811-7/8	285 (300-7/8)	
LNAV/VNAV DA		810-7/8	284 (300-7/8)	
LNAV MDA		880-1	354 (400-1)	
CIRCLING	960-1	980-1	1100-1 1/2	1280-2 1/2
	434 (500-1)	454 (500-1)	574 (600-1 1/2)	754 (800-2 1/2)



SE-2, 15 MAY 2025 to 12 JUN 2025

SE-2, 15 MAY 2025 to 12 JUN 2025