

LOC I-HNZ 109.75	APP CRS 060°	Rwy Idg TDZE Apt Elev	5501 526 526
----------------------------	------------------------	-----------------------------	---

LOC RWY 6

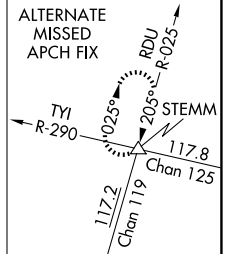
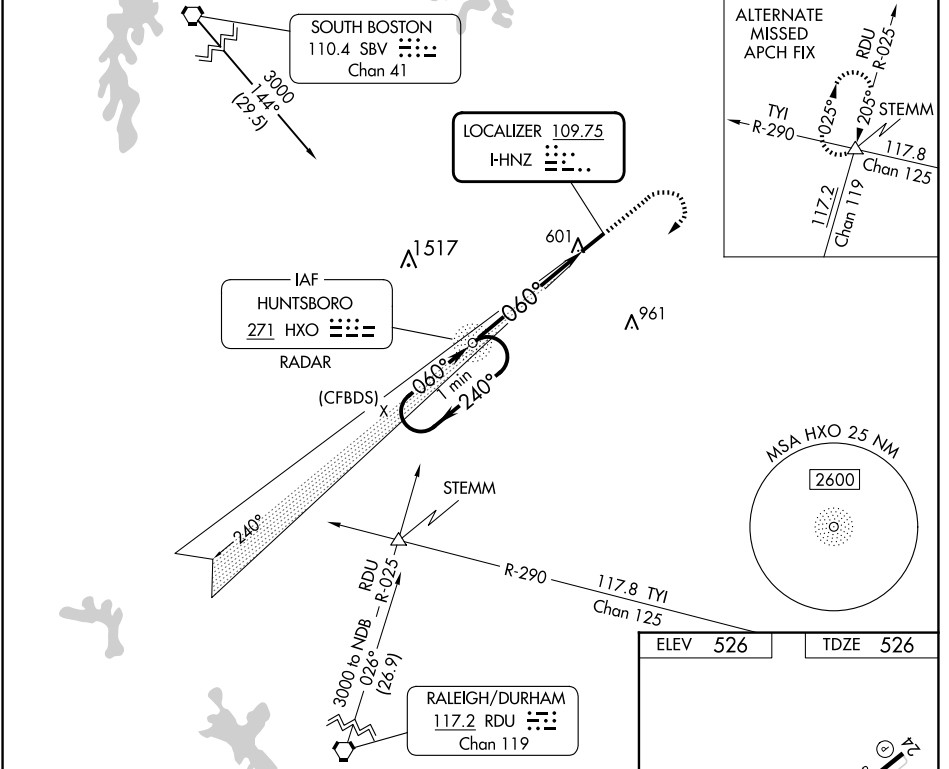
HENDERSON/OXFORD (HNZ)

ADF or RADAR required. ADF or RADAR required for procedure entry.

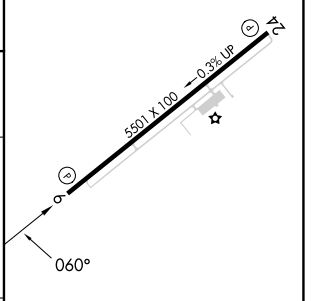
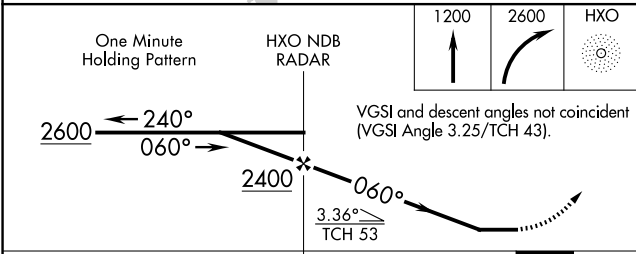
▼ Rwy 6 helicopter visibility reduction below 3/4 SM NA. When local altimeter setting not received, use Roxboro altimeter setting and increase all MDA 80 feet; increase S-6 Cat C/D visibility 1/2 SM and Circling Cat C and D visibility 1/4 SM.

▲ MISSED APPROACH: Climb to 1200 then climbing right turn to 2600 direct HXO NDB/RADAR and hold.

AWOS-3 118.625	RALEIGH APP CON 132.35 256.9	UNICOM 122.8 (CTAF) 0
--------------------------	--	---------------------------------



ELEV 526	TDZE 526
----------	----------



CATEGORY	A	B	C	D	REIL Rwy 6 0	MIRL Rwy 6-24 0
S-6	980-1	454 (500-1)	980-1 3/8	454 (500-1 3/8)	FAF to MAP 5.2 NM	
CIRCLING	980-1	454 (500-1)	1100-1 1/2 574 (600-1 1/2)	1280-2 1/2 754 (800-2 1/2)	Knots	60 90 120 150 180
					Min:Sec	5:12 3:28 2:36 2:05 1:44

SE-2, 15 MAY 2025 to 12 JUN 2025

SE-2, 15 MAY 2025 to 12 JUN 2025