

LOC/DME I-LZY <b>111.9</b> Chan <b>56</b>	APP CRS <b>054°</b>	Rwy Idg <b>10001</b> TDZE <b>900</b> Apt Elev <b>926</b>
---	------------------------	--

# ILS or LOC RWY 5R

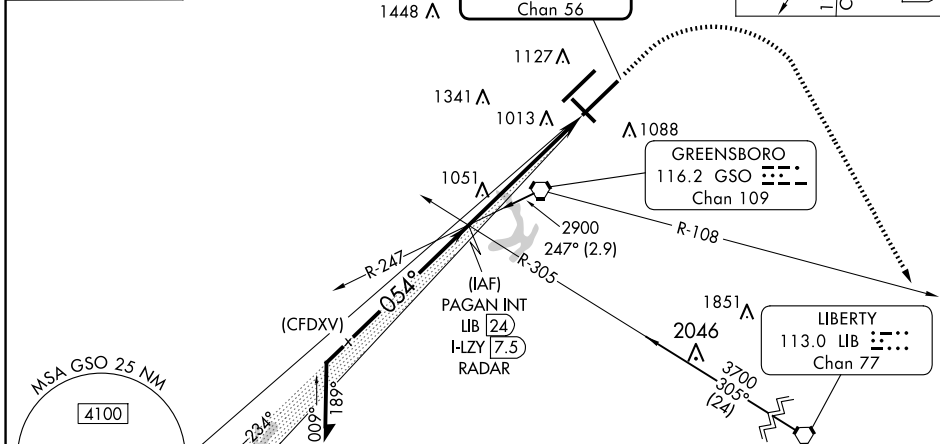
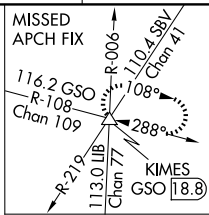
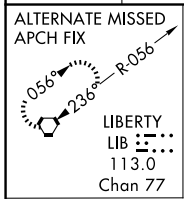
PIEDMONT TRIAD INTL (GSO)

**Simultaneous approach authorized. For inop ALS, increase S-LOC 5R Cat C/D to RVR 6000.**  
**\*\*RVR 1800 authorized with the use of FD or AP or HUD to DA.**

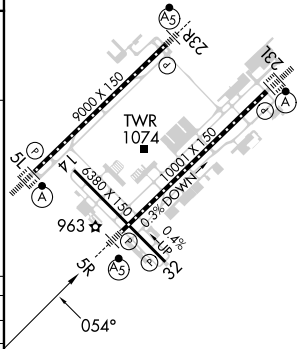
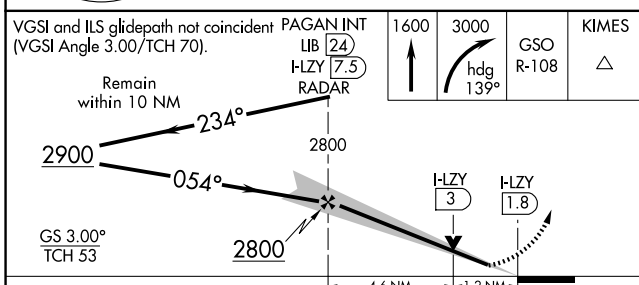


**MISSED APPROACH:** Climb to 1600 then climbing right turn to 3000 on heading 139° and GSO VORTAC R-108 to KIMES INT/GSO 18.8 DME and hold.

D-ATIS <b>128.55</b>	GREENSBORO APP CON <b>124.35 269.225</b> <b>126.6 327.075</b> (050°-249°)	GREENSBORO TOWER <b>119.1 290.325</b>	GND CON <b>121.9 348.6</b>	CLNC DEL <b>121.75</b>
-------------------------	---	--	-------------------------------	---------------------------



ELEV 926	TDZE 900
TDZ/CL Rwy 5L, 23R and 23L	
REIL Rwy 32	
HIRL Rwy 14-32, 5R-23L and 5L-23R	



CATEGORY	A	B	C	D
S-ILS 5R **		1100/24	200 (200-½)	
S-LOC 5R	1320/24	420 (400-½)	1320/40	420 (400-¾)
CIRCLING	1440-1	514 (600-1)	1700-2¼ 774 (800-2¼)	1700-2½ 774 (800-2½)

FAF to MAP 5.7 NM

Knots	60	90	120	150	180
Min:Sec	5:42	3:48	2:51	2:17	1:54

SE-2, 15 MAY 2025 to 12 JUN 2025

SE-2, 15 MAY 2025 to 12 JUN 2025