

WAAS CH <b>58108</b> <b>W23A</b>	APP CRS <b>229°</b>	Rwy Idg TDZE <b>37</b> Apt Elev <b>40</b>	<b>6005</b>
----------------------------------------	------------------------	-------------------------------------------------	-------------

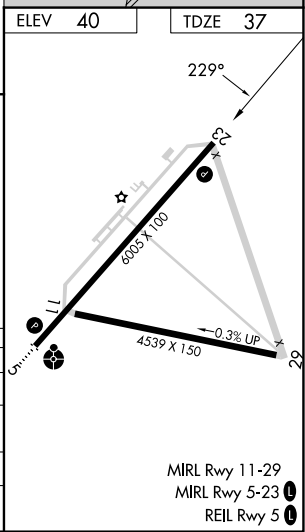
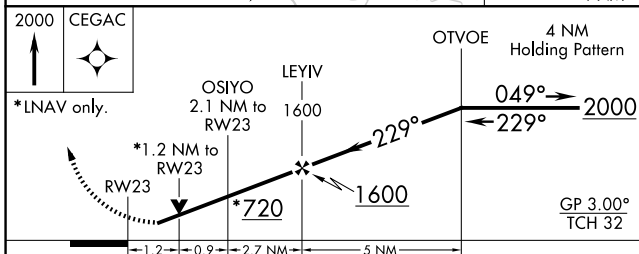
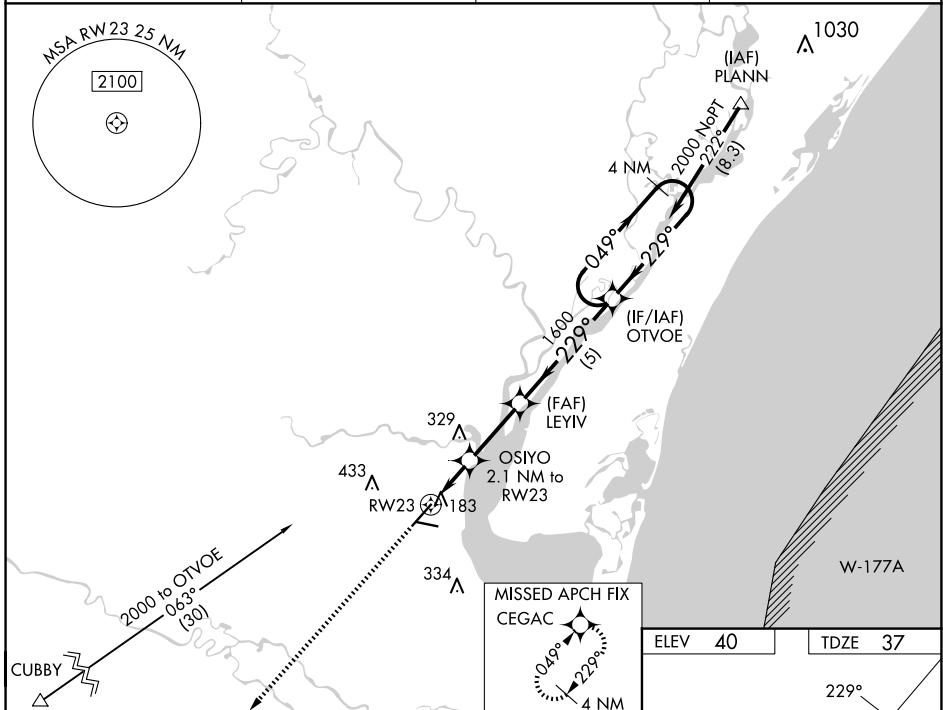
# RNAV (GPS) RWY 23

GEORGETOWN COUNTY (GGE)

RNP APCH.  
 ⚠ For uncompensated Baro-VNAV systems, LNAV/VNAV NA below -15°C or above 54°C.  
 Circling Rwy 11, 29 NA at night. Rwy 23 helicopter visibility reduction below ¼ SM NA.

MISSED APPROACH: Climb to 2000 direct CEGAC and hold.

AWOS-3 <b>118.275</b>	MYRTLE BEACH APP CON * <b>127.4 257.95</b>	GCO <b>121.725</b>	UNICOM <b>123.0 (CTAF) ①</b>
--------------------------	-----------------------------------------------	-----------------------	---------------------------------



CATEGORY	A	B	C	D
LPV DA		323-1	286 (300-1)	
LNAV/VNAV DA		347-1½	310 (400-1½)	
LNAV MDA	440-1	403 (500-1)	440-1½	403 (500-1½)
CIRCLING	500-1	520-1	740-2	740-2¼
	460 (500-1)	480 (500-1)	700 (700-2)	700 (700-2¼)

MIRL Rwy 11-29  
 MIRL Rwy 5-23 ①  
 REIL Rwy 5 ①

SE-2, 15 MAY 2025 to 12 JUN 2025

SE-2, 15 MAY 2025 to 12 JUN 2025