

LOC/DME I-JUH 109.35 Chan 30(Y)	APP CRS 276°	Rwy Idg TDZE Apt Elev	5002 3142 3178
---	------------------------	-----------------------------	---

LOC RWY 28

ASHE COUNTY (GEV)

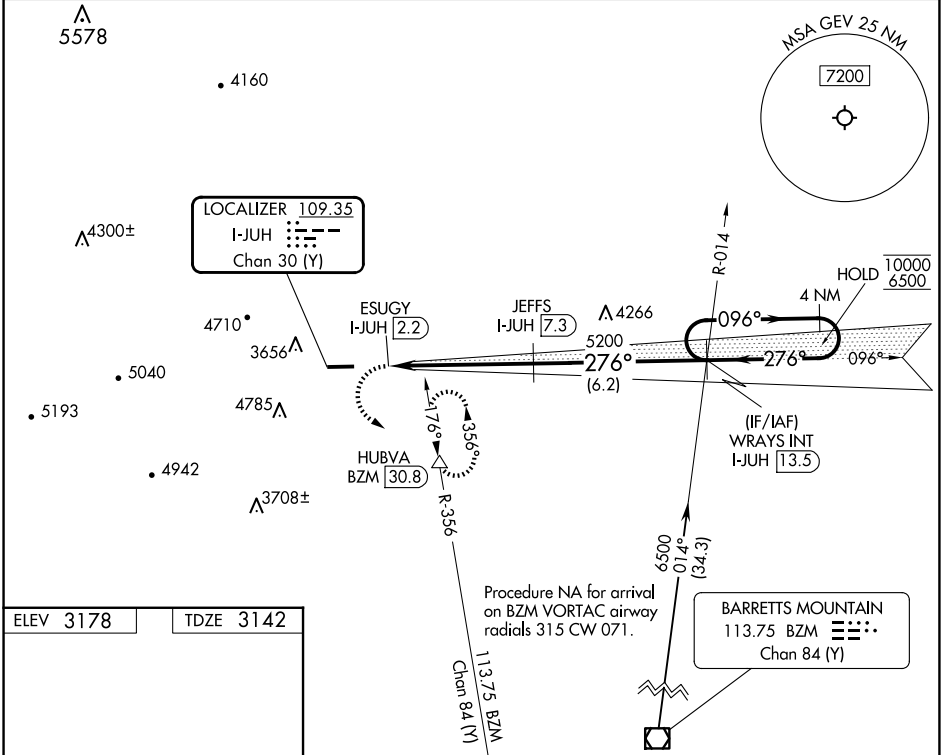
DME required.

▼ Circling to Rwy 10 NA at night.

⚠ -16°C

MISSED APPROACH: Climbing left turn to 7200 on heading 096° and on BZM VOR/DME R-356 to HUBVA/BZM 30.8 DME and hold, continue climb-in-hold to 7200.

AWOS-3 120.675	ATLANTA CENTER 125.15 263.0	UNICOM 122.8 (CTAF) 0
--------------------------	---------------------------------------	---------------------------------



ELEV 3178 TDZE 3142

REIL Rwy 28 0

MIRL Rwy 10-28 0

5002 X 75

1.8% UP

276°

7200	BZM R-356	HUBVA	4 NM Holding Pattern	
hdg 096°			WRAYS INT I-JUH 13.5	
ESUGY I-JUH 2.2	JEFFS I-JUH 7.3	5200	096° → 10000	← 276° 6500
1.3	1.3 NM	3.9 NM	6.2 NM	
3.00°	TCH 48			
CATEGORY	A	B	C	D
S-LOC 28	3980-1½	838 (900-1½)	3980-2½	838 (900-2½)
CIRCLING	4280-1½	1102 (1200-1½)	5140-3 1962 (2000-3)	5180-3 2002 (2100-3)

SE-2, 15 MAY 2025 to 12 JUN 2025

SE-2, 15 MAY 2025 to 12 JUN 2025