

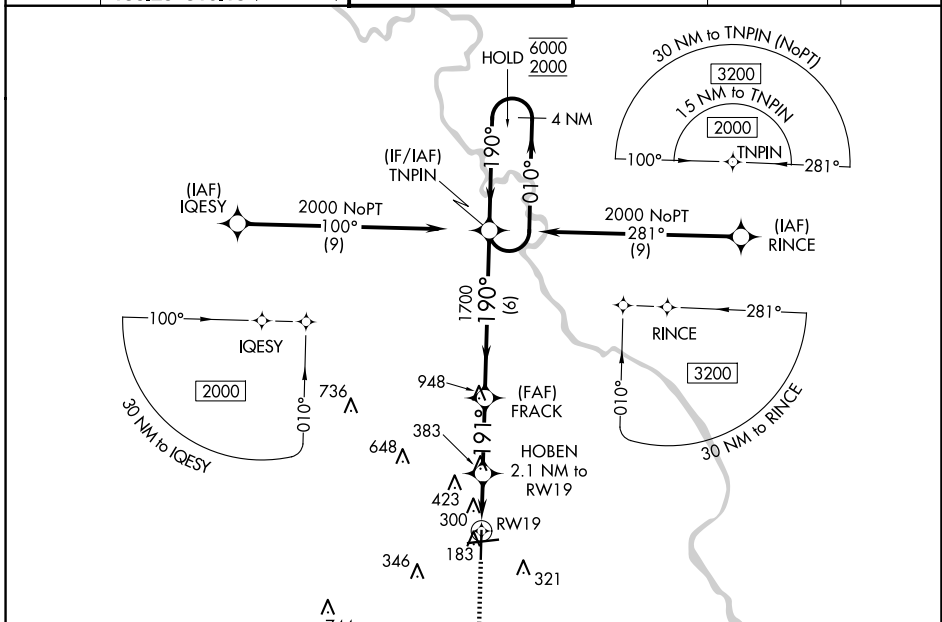
APP CRS	Rwy Idg	6000
191°	TDZE	144
	Apt Elev	147

RNAV (GPS) RWY 19

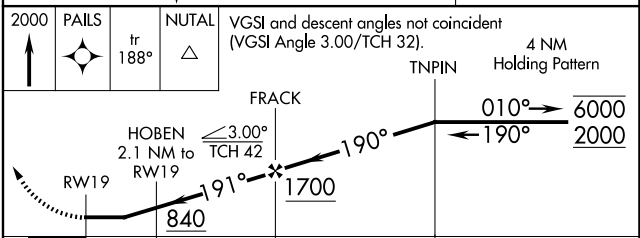
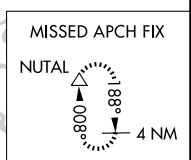
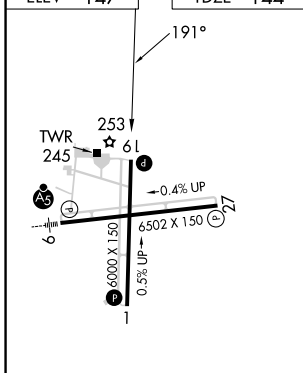
FLORENCE RGNL (FLO)

RNP APCH - GPS.		MISSED APPROACH: Climb to 2000 direct PAILS and on track 188° to NUTAL and hold.		
<p>▼ Rwy 19 helicopter visibility reduction below 1 SM NA. Straight-in Rwy 19 NA at night. Circling Rwy 1, 19 NA at night.</p>				

ATIS	FLORENCE APP CON★	FLORENCE TOWER★	GND CON	CLNC DEL	UNICOM
123.625	118.6 341.7 <small>(256°-074°)</small>	125.1 (CTAF) 353.85	121.9 353.85	121.9 353.85	122.95
	135.25 316.15 <small>(075°-255°)</small>				



ELEV 147	TDZE 144
-----------------	-----------------



2000	PAILS	NUTAL	VGSI and descent angles not coincident (VGSI Angle 3.00/TCH 32).	
↑	♦ 188°	△	4 NM	TNPIN Holding Pattern
RWY 19		FRACK	010° → 6000	
840		HOBEN 2.1 NM to RWY 19	← 190° 2000	
-2.1 NM-		2.7 NM	6 NM	
CATEGORY	A	B	C	D
LNAV MDA	560-1	416 (500-1)	560-1 ¹ / ₈	416 (500-1 ¹ / ₈)
CIRCLING	640-1 493 (500-1)	660-1 513 (600-1)	900-2 ¹ / ₄ 753 (800-2 ¹ / ₄)	900-2 ¹ / ₂ 753 (800-2 ¹ / ₂)

MIRL Rwy 1-19
REIL Rwy 1, 19 and 27
HIRL Rwy 9-27

FLORENCE, SOUTH CAROLINA
Amdt 1A 30NOV23

34°11'N-79°43'W

RNAV (GPS) RWY 19

SE-2, 15 MAY 2025 to 12 JUN 2025

SE-2, 15 MAY 2025 to 12 JUN 2025