

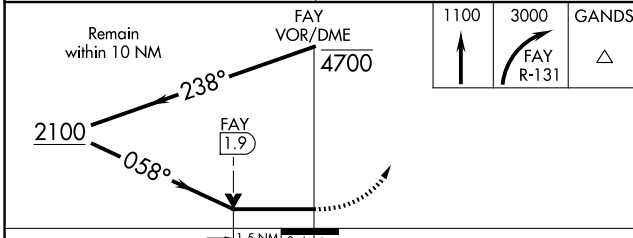
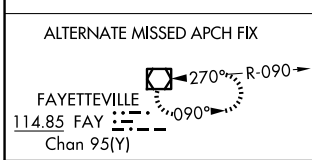
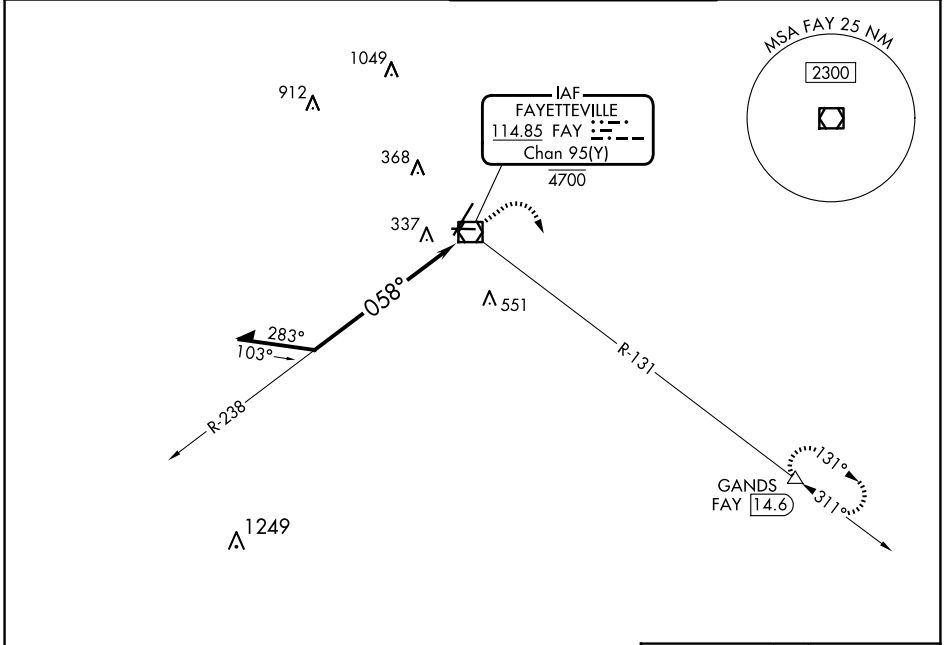
| | | | |
|-------------------|-------------|----------|-------------|
| VOR/DME | FAY | Rwy Idg | 6508 |
| 114.85 | APP CRS | TDZE | 189 |
| Chan 95(Y) | 058° | Apt Elev | 189 |

VOR RWY 4

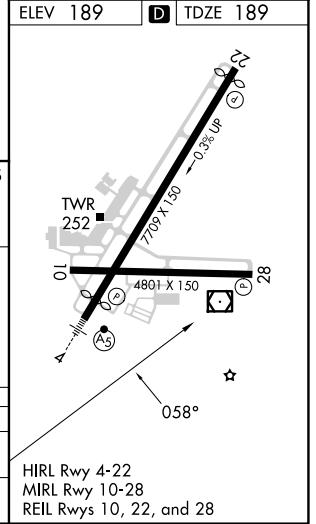
FAYETTEVILLE RGNL/GRANNIS FLD (FAY)

| | | |
|---|-------|--|
| DME required. | MALSR | MISSED APPROACH: Climb to 1100 then climbing right turn to 3000 on FAY VOR/DME R-131 to GANDS/FAY 14.6 DME and hold. |
| ▼ Rwy 4 helicopter visibility reduction below RVR 4000 NA. ▲ For inop ALS, increase S-4 Cats A/B visibility to RVR 5500. | | |

| | | | |
|-----------------------|---|--|-------------------------------|
| ATIS 121.25 | FAYETTEVILLE APP CON 133.0 290.25 | FAYETTEVILLE TOWER 118.3 269.2 | GND CON 121.7 348.6 |
|-----------------------|---|--|-------------------------------|



| CATEGORY | A | B | C | D |
|----------|--------|-------------|----------------------|------------------------|
| S-4 | 720/40 | 531 (600-¾) | 720/55 | 531 (600-1) |
| CIRCLING | 720-1 | 531 (600-1) | 860-2 671 (700-2) | 860-2¼ 671 (700-2¼) |



SE-2, 15 MAY 2025 to 12 JUN 2025

SE-2, 15 MAY 2025 to 12 JUN 2025