

WAAS CH 97628 W06A	APP CRS 058°	Rwy Idg TDZE Apt Elev	5004 733 733
--	------------------------	-----------------------------	---

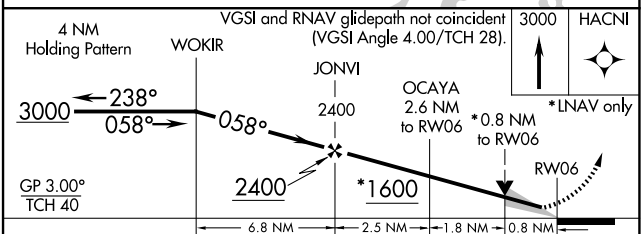
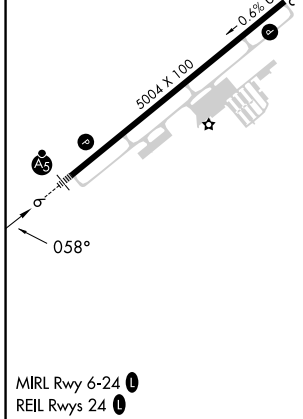
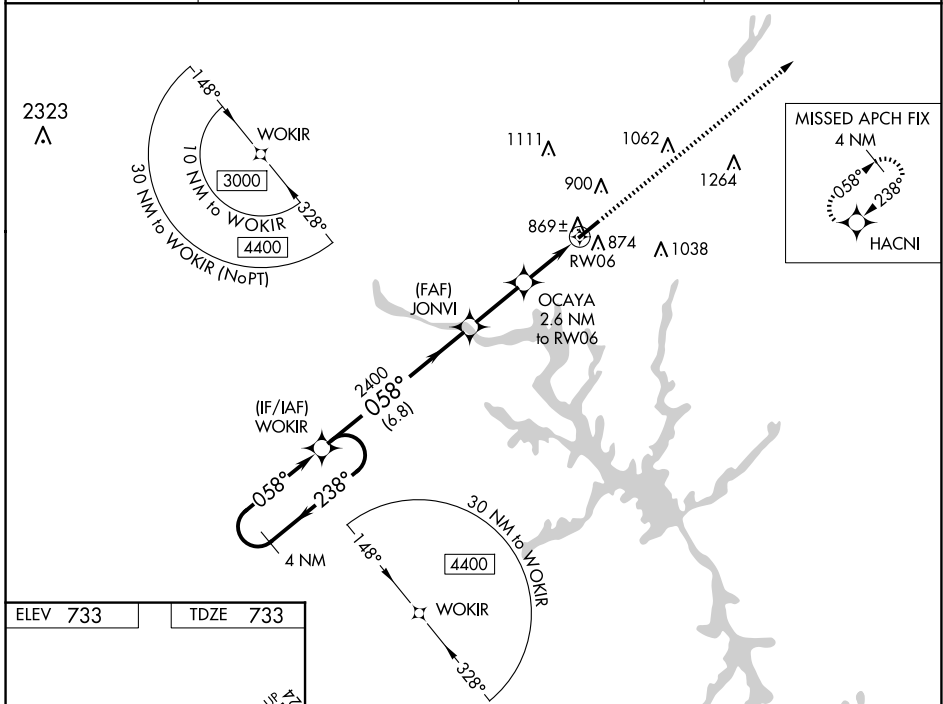
RNAV (GPS) RWY 6

DAVIDSON COUNTY EXEC (E.XX)

⚠ For uncompensated Baro-VNAV systems, LNAV/VNAV NA below -16°C (4°F) or above 54°C (130°F). When local altimeter setting not received, use Salisbury altimeter setting and increase all DA 37 feet and all MDA 40, increase LPV, LNAV/VNAV all Cats and LNAV Cat C visibility 1/8 mile. DME/DME RNP-0.3 NA. Baro-VNAV and VDP NA when using Salisbury altimeter setting.

MALSR MISSED APPROACH: Climb to 3000 direct HACNI and hold.

AWOS-3 119.825	GREENSBORO APP CON 126.6 327.075	GCO 135.075	UNICOM 122.8 (CTAF) 0
--------------------------	--	-----------------------	---------------------------------



CATEGORY	A	B	C	D
LPV DA	983-7/8	250 (300-7/8)		NA
LNAV/VNAV DA	1020-1	287 (300-1)		NA
LNAV MDA	1120-1	387 (400-1)	1120-1 1/8 387 (400-1 1/8)	NA
CIRCLING	1220-1 487 (500-1)	1240-1 507 (600-1)	1340-1 3/4 607 (700-1 3/4)	NA

SE-2, 15 MAY 2025 to 12 JUN 2025

SE-2, 15 MAY 2025 to 12 JUN 2025