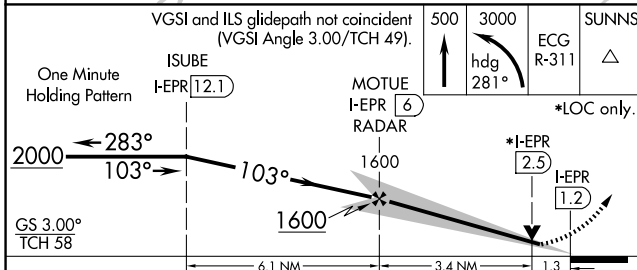
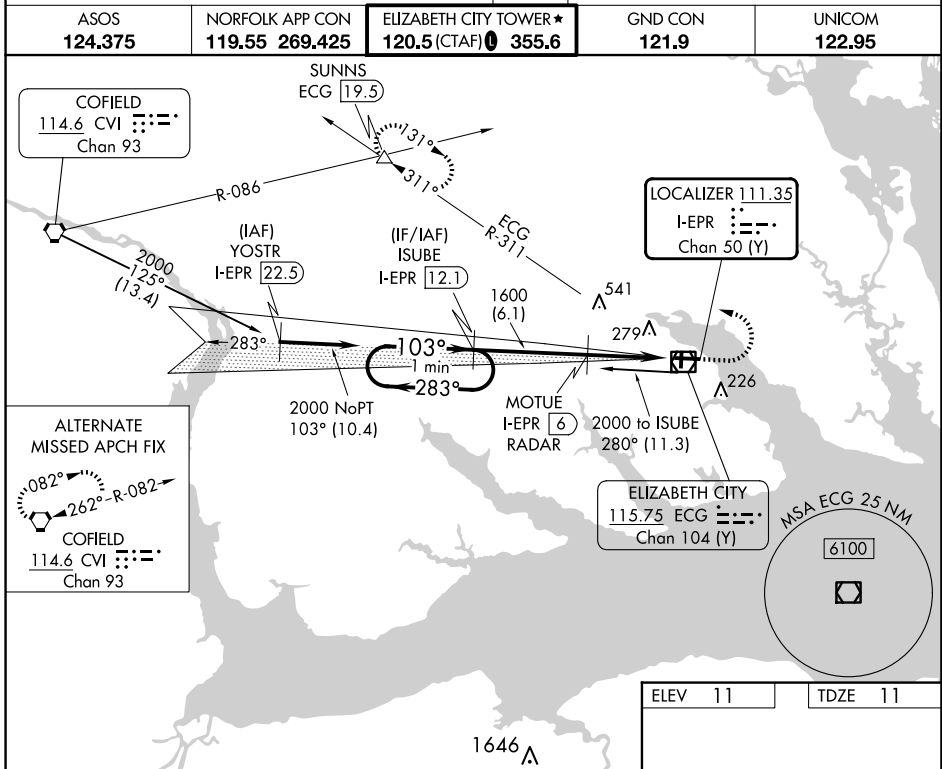


LOC/DME I-EPR 111.35 Chan 50 (Y)	APP CRS 103°	Rwy Idg 7219 TDZE 11 Apt Elev 11
--	------------------------	---

ILS or LOC RWY 10

ELIZABETH CITY CG AIR STATION/RGNL (ECG)

DME required.		SALS 	MISSED APPROACH: Climb to 500 then climbing left turn to 3000 on heading 281° and ECG VOR/DME R-311 to SUNNS INT/ECG 19.5 DME and hold.
ASOS 124.375	NORFOLK APP CON 119.55 269.425	ELIZABETH CITY TOWER ★ 120.5 (CTAF) 355.6	GND CON 121.9
		UNICOM 122.95	



ELEV 11	TDZE 11
<p>MRL Rwy 1-19 HIRL Rwy 10-28 REIL Rwys 10 and 28</p> <p>FAF to MAP 4.7 NM</p> <p>Knots: 60 90 120 150 180 Min:Sec: 4:42 3:08 2:21 1:53 1:34</p>	

CATEGORY	A	B	C	D
S-ILS 10	261-3/4		250 (300-3/4)	
S-LOC 10	460-1 449 (500-1)		460-13/8 449 (500-13/8)	
CIRCLING	480-1 469 (500-1)		640-13/8 629 (700-13/8) 640-2 629 (700-2)	

SE-2, 15 MAY 2025 to 12 JUN 2025

SE-2, 15 MAY 2025 to 12 JUN 2025