

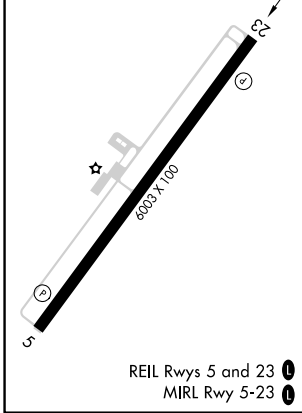
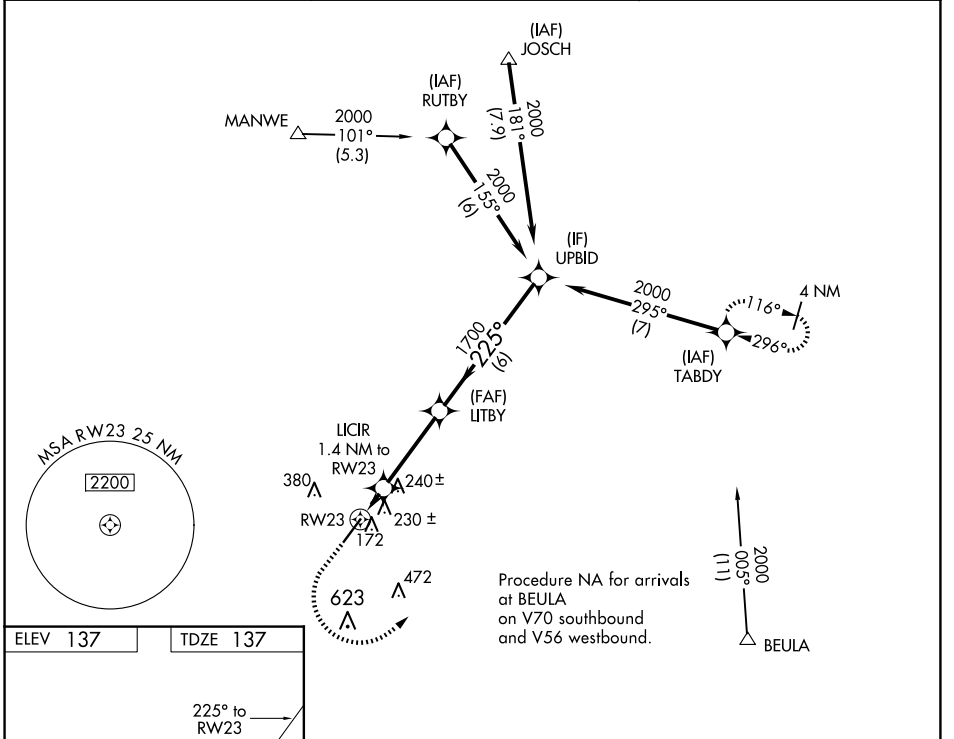
WAAS CH 69521 W23A	APP CRS 225°	Rwy Idg TDZE Apt Elev	6003 137 137
--	------------------------	-----------------------------	---

RNAV (GPS) RWY 23

DUPLIN COUNTY (DPL)

RNP APCH.	MISSED APPROACH: Climb to 1000 then climbing left turn to 2000 direct TABDY and hold.
<p>⚠ For uncompensated Baro-VNAV systems, LNAV/VNAV NA below -15°C or above 54°C.</p>	

AWOS-3 120.675	SEYMOUR JOHNSON APP CON★ 119.7 273.6	UNICOM 123.0 (CTAF) ①
--------------------------	--	---------------------------------



1000	2000	TABDY				
*LNAV only.		LITBY	UPBID			
RW23		LICIR 1.4 NM to RW23	1700	225°		2000
*620			1700	GP 3.00° TCH 43		
			-1.4 NM - 3.4 NM - 6 NM			
CATEGORY	A	B	C	D		
LPV DA	DA	337-¾		200 (200-¾)		
LNAV/VNAV	DA	407-⅞		270 (300-⅞)		
LNAV MDA	480-1		343 (400-1)			

SE-2, 15 MAY 2025 to 12 JUN 2025

SE-2, 15 MAY 2025 to 12 JUN 2025