

WAAS CH <b>82415</b> <b>W18D</b>	APP CRS <b>183°</b>	Rwy Idg TDZE <b>744</b> Apt Elev <b>748</b>	<b>9000</b>
--	------------------------	---	-------------

# RNAV (GPS) Y RWY 18R

CHARLOTTE/DOUGLAS INTL (CLT)

RNP APCH

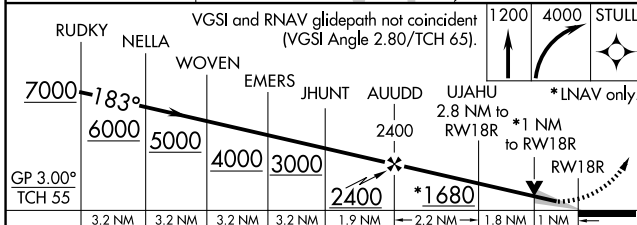
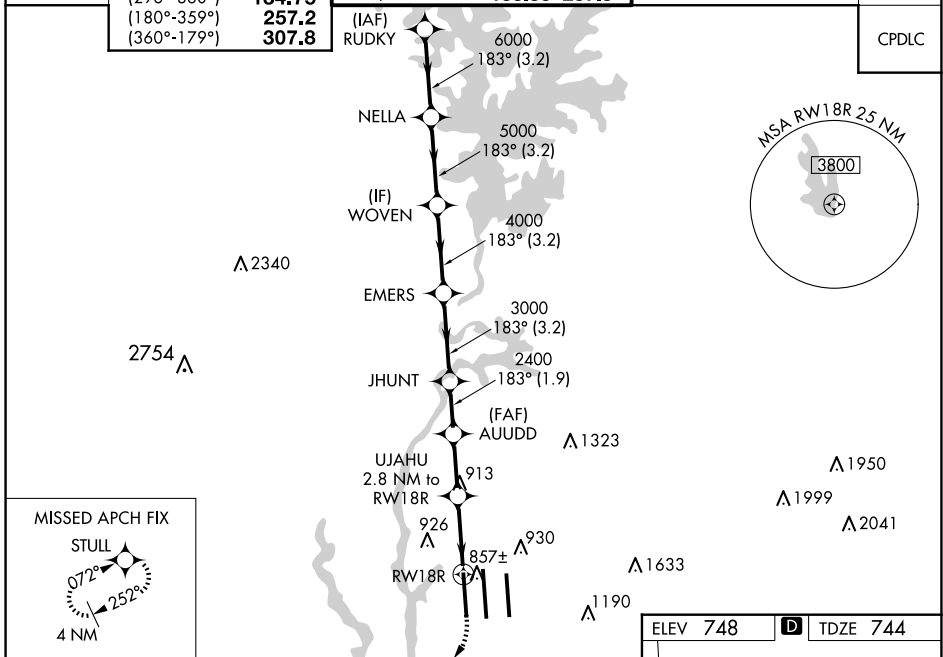
**⚠** Circling NA at night. Simultaneous approach authorized. LNAV procedure NA during simultaneous operations. Use of FD or AP providing Baro-VNAV systems, LNAV/VNAV NA below -11°C or above 54°C. For inop ALS, increase LNAV/VNAV all Cats visibility to RVR 4500. For inop ALS, increase LNAV Cat C/D visibility to RVR 5500.

ALSF-2



MISSED APPROACH: Climb to 1200 then climbing right turn to 4000 direct STULL and hold, continue climb-in-hold to 4000.

D-ATIS ARR <b>121.15</b> DEP <b>132.1</b>	CHARLOTTE APP CON (001°-119°) <b>128.32</b> (120°-295°) <b>120.05</b> (296°-360°) <b>134.75</b> (180°-359°) <b>257.2</b> (360°-179°) <b>307.8</b>	CHARLOTTE TOWER (Rwys 18L-36R) <b>118.1 257.8</b> (Rwy 18C-36C) <b>126.4 257.8</b> (Rwy 18R-36L) <b>133.35 257.8</b>	GND CON <b>121.8 348.6</b> (WEST) <b>121.9 348.6</b> (EAST)	CLNC DEL <b>127.15</b> <b>348.6</b>
---	--	---	---	---



CATEGORY	A	B	C	D
LPV DA	944/18		200 (200-½)	
LNAV/VNAV DA	1018/24		274 (300-½)	
LNAV MDA	1120/24	376 (400-½)	1120/40	376 (400-¾)
<b>C</b> CIRCLING	1380-1	632 (700-1)	1500-2¼ 752 (800-2¼)	1500-2½ 752 (800-2½)

