

LOC I-DQG 111.7	APP CRS 003°	Rwy Idg 10000
		TDZE 707
		Apt Elev 748

ILS or LOC RWY 36C

CHARLOTTE/DOUGLAS INTL (CLT)

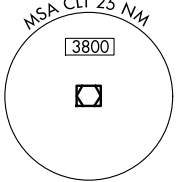
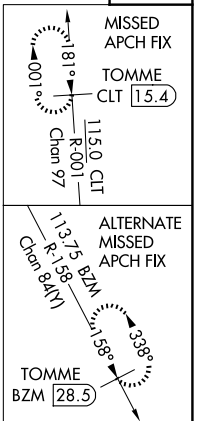
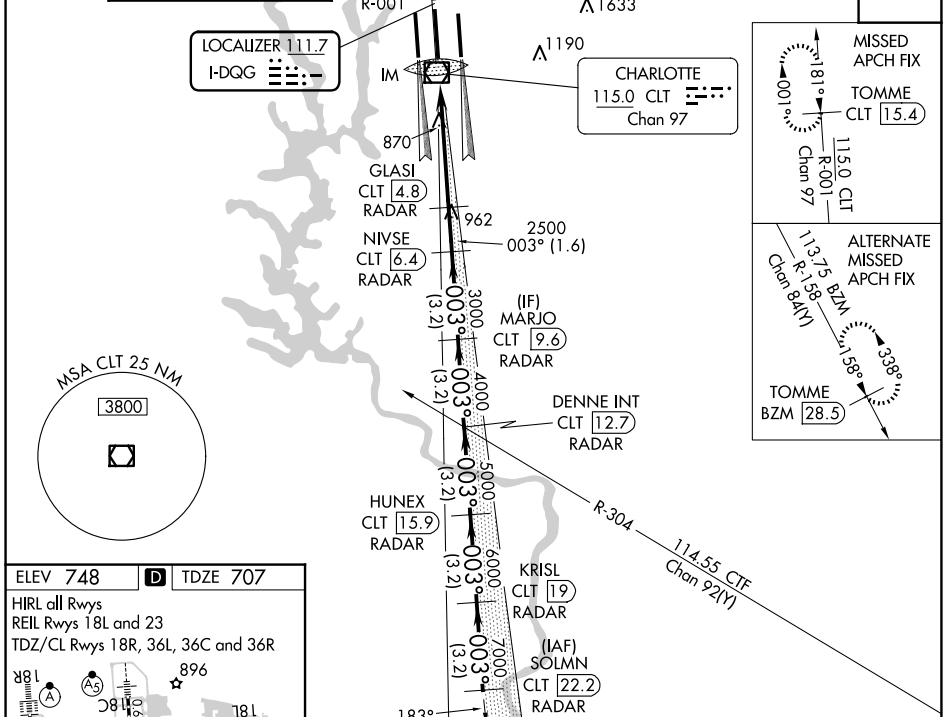
RADAR required for procedure entry. DME or RADAR required.

⚠ Circling NA at night. Simultaneous approach authorized. DQG ILS LLZ Rwy 36C unusable for rollout guidance.

ALSF-2
A

MISSED APPROACH: Climb to 3000 on CLT VOR/DME R-001 to TOMME/CLT 15.4 DME and hold.

D-ATIS ARR 121.15 DEP 132.1	CHARLOTTE APP CON (001°-119°) 128.32 (120°-295°) 120.05 (296°-360°) 134.75 (180°-359°) 257.2 (360°-179°) 307.8	CHARLOTTE TOWER (Rwys 18L-36R) 118.1 257.8 (Rwy 18C-36C) 126.4 257.8 (Rwy 18R-36L) 133.35 257.8	GND CON 121.8 348.6 (WEST) 121.9 348.6 (EAST)	CLNC DEL 127.15 348.6
---	--	---	---	---------------------------------



ELEV 748 **D** TDZE 707

HIRL all Rwys
REIL Rwys 18L and 23
TDZ/CL Rwys 18R, 36L, 36C and 36R

FAF to MAP 5.4 NM

Knots	60	90	120	150	180
Min:Sec	5:24	3:36	2:42	2:10	1:48

CLT R-001	3000	VGS and ILS glidepath not coincident (VGS Angle 3.00/TCH 72).				SOLMN CLT 22.2
	TOMME CLT 15.4					
GLASI CLT 4.8	NIVSE CLT 6.4	MARJO CLT 9.6	DENNE INT CLT 12.7	HUNEX CLT 19	KRISL CLT 19	
IM	2500	3000	4000	5000	6000	7000
						GS 3.00° TCH 57
	0.2	0.2 NM	1.6 NM	3.2 NM	3.2 NM	3.2 NM
CATEGORY	A	B	C	D		
S-ILS 36C	907/18 200 (200-½)					
S-LOC 36C	1120/24 413 (400-½)					
C CIRCLING	1380-1	632 (700-1)	1500-2¼	752 (800-2¼)	1500-2½	752 (800-2½)

SE-2, 15 MAY 2025 to 12 JUN 2025

SE-2, 15 MAY 2025 to 12 JUN 2025