

LOC/DME I-VKQ 110.35 Chan 40(Y)	APP CRS 183°	Rwy Idg TDZE Apt Elev 8676 748 748
--	------------------------	--

ILS or LOC RWY 18L

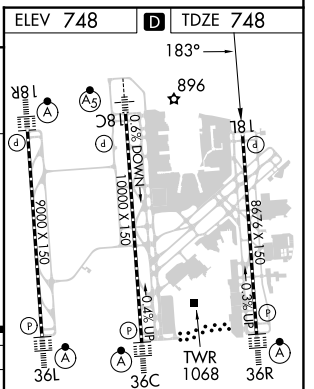
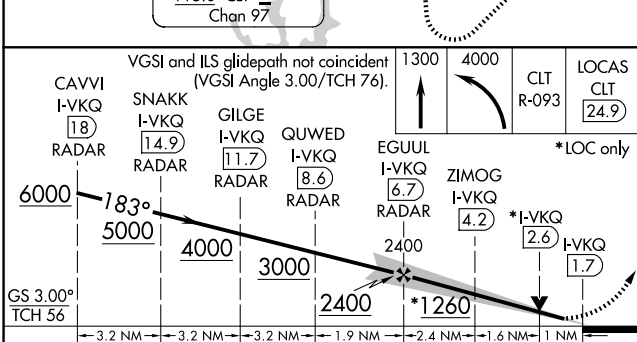
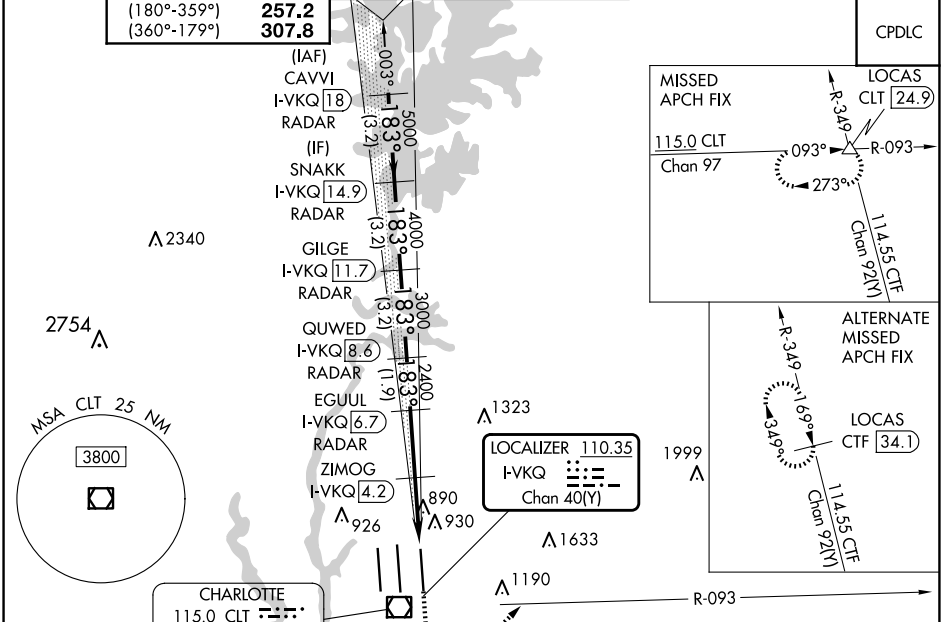
CHARLOTTE/DOUGLAS INTL (CLT)

RADAR required for procedure entry. DME or RADAR required.

Simultaneous approach authorized.
Rwy 18L helicopter visibility reduction below RVR 4000 NA.

MISSED APPROACH: Climb to 1300 then climbing left turn to 4000 on CLT VOR/DME R-093 to LOCAS INT/CLT 24.9 DME and hold.

D-ATIS	CHARLOTTE APP CON	CHARLOTTE TOWER	GND CON	CLNC DEL
ARR 121.15 DEP 132.1	128.32 (001°-119°) 120.05 (120°-295°) 134.75 (296°-360°) 257.2 (180°-359°) 307.8 (360°-179°)	(Rwys 18L-36R) 118.1 257.8 (Rwy 18C-36C) 126.4 257.8 (Rwy 18R-36L) 133.35 257.8	121.8 348.6 (WEST) 121.9 348.6 (EAST)	127.15 348.6



CAVVI I-VKQ (18) RADAR	SNAKK I-VKQ (14.9) RADAR	GILGE I-VKQ (11.7) RADAR	QUWED I-VKQ (8.6) RADAR	EGUUL I-VKQ (6.7) RADAR	ZIMOG I-VKQ (4.2) RADAR	*I-VKQ (2.6) RADAR	I-VKQ (1.7) RADAR
*LOC only							
CATEGORY	A		B		C		D
S-ILS 18L	1002/40		254 (300-¾)				
S-LOC 18L	1260/55	512 (600-1)	1260-1⅓		512 (600-1⅓)		
ZIMOG FIX MINIMUMS (DME REQUIRED)							
S-LOC 18L	1140/55		392 (400-1)		1140/60		392 (400-1¼)

HIRL all Rwws REIL Rwws 18L and 23 TDZ/CL Rwws 18R, 36L, 36C and 36R					
FAF to MAP 5 NM					
Knots	60	90	120	150	180
Min:Sec	5:00	3:20	2:30	2:00	1:40

SE-2, 15 MAY 2025 to 12 JUN 2025

SE-2, 15 MAY 2025 to 12 JUN 2025