

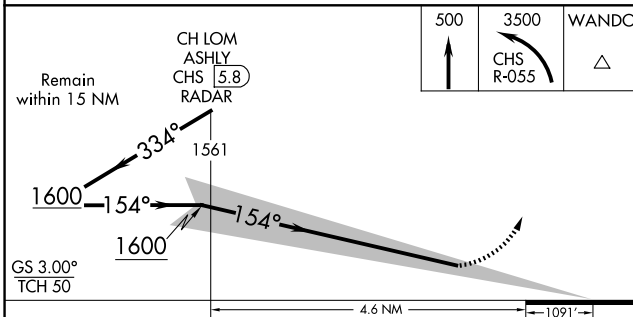
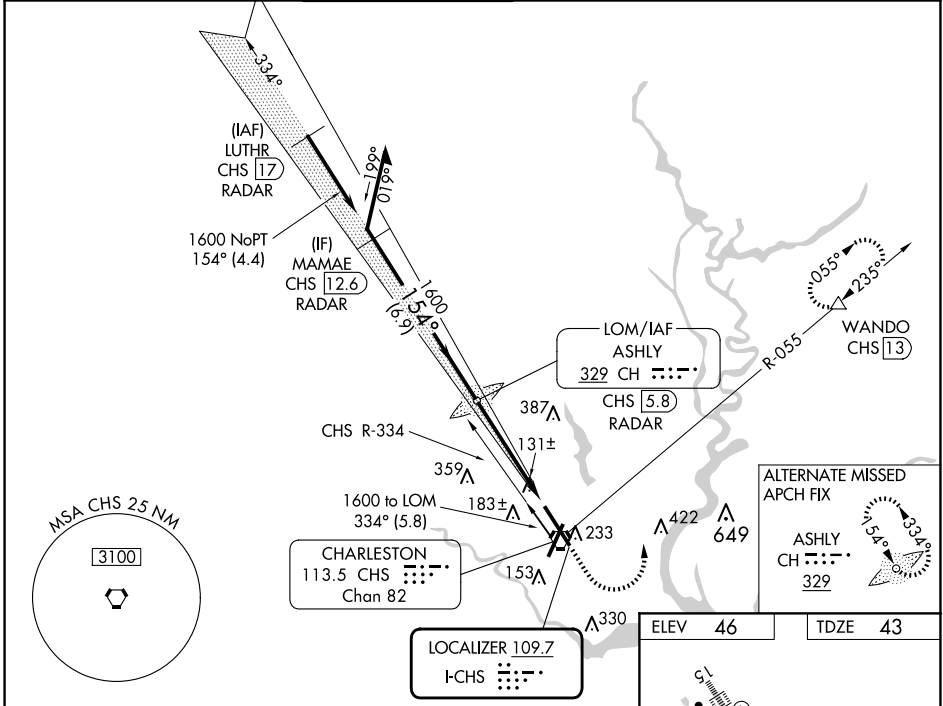
LOC I-CHS <b>109.7</b>	APP CRS <b>154°</b>	Rwy Idg TDZE Apt Elev	<b>9001</b> <b>43</b> <b>46</b>
---------------------------	------------------------	-----------------------------	---------------------------------------

# ILS RWY 15 (SA CAT I)

CHARLESTON AFB/INTL (CHS)

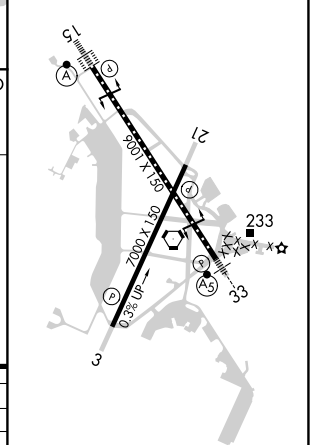
DME required. Requires specific OPSPEC, MSPEC, or LOA approval and use of HUD to DH. DME from CHS VORTAC. Simultaneous reception of I-CHS and CHS DME required.		ALSF-2	MISSED APPROACH: Climb to 500 then climbing left turn to 3500 on CHS VORTAC R-055 to WANDO/CHS VORTAC 13 DME and hold, continue climb-in-hold to 3500.
---	--	--------	--

D-ATIS <b>124.75</b>	CHARLESTON APP CON <b>120.7 306.925</b>	CHARLESTON TOWER <b>126.0 239.0</b>	GND CON <b>121.9 348.6</b>	CLNC DEL <b>127.325 291.65</b>	CPDLC
-------------------------	--	--	-------------------------------	-----------------------------------	-------



CATEGORY	A	B	C	D
S-ILS 15	RA 151/14 150 DA 193			

ELEV 46	TDZE 43
---------	---------



**SA CATEGORY I ILS - SPECIAL AIRCREW & AIRCRAFT CERTIFICATION REQUIRED**

TDZ/CL Rwy 15  
REIL Rwy 3 and 21  
HIRL Rwy 3-21 and 15-33

SE-2, 15 MAY 2025 to 12 JUN 2025

SE-2, 15 MAY 2025 to 12 JUN 2025