

WAAS CH 40026 W23A	APP CRS 232°	Rwy Idg TDZE Apt Elev	7001 213 236
--	------------------------	-----------------------------	---

RNAV (GPS) RWY 23

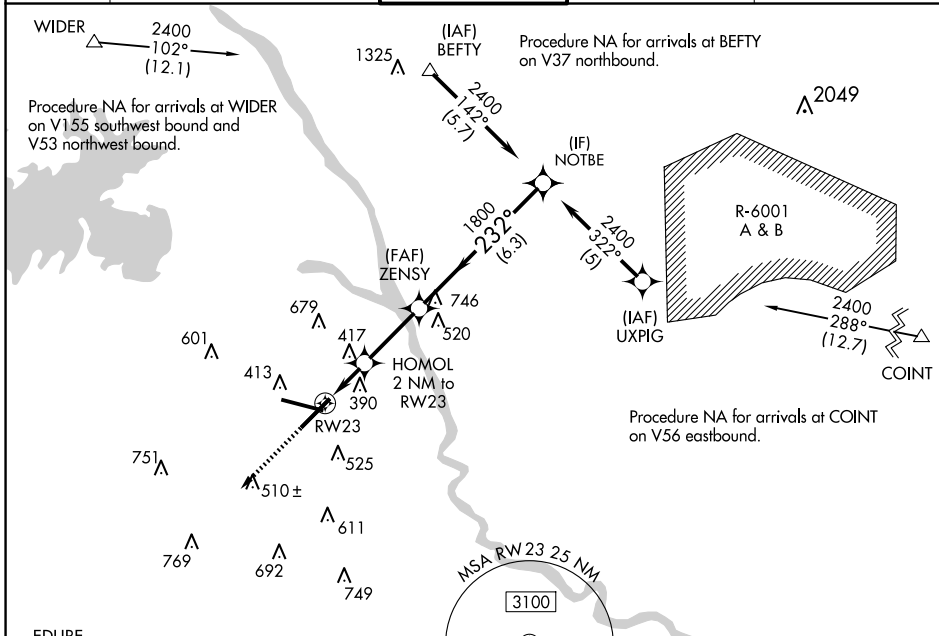
COLUMBIA METRO (CAE)

RNP APCH - GPS.

▼ For uncompensated Baro-VNAV systems, LNAV/VNAV NA below -15°C or above 54°C. Rwy 23 helicopter visibility reduction below ¾ SM NA.

MISSED APPROACH: Climb to 2300 direct EDURE and hold.

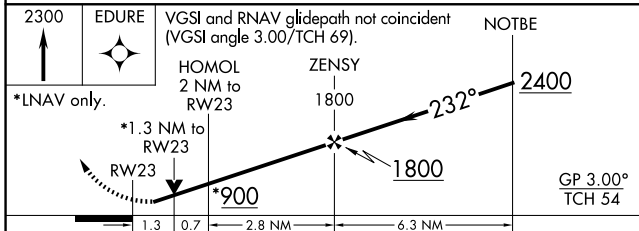
ATIS 120.15	COLUMBIA APP CON 133.4 285.6 (290°-109°) 124.15 338.2 (110°-289°)	COLUMBIA TOWER 119.5 257.8	GND CON 121.9 348.6	CLNC DEL 119.75
-----------------------	---	--------------------------------------	-------------------------------	---------------------------



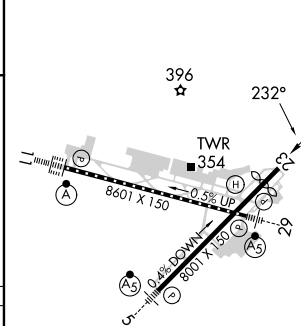
SE-2, 15 MAY 2025 to 12 JUN 2025

SE-2, 15 MAY 2025 to 12 JUN 2025

2300	EDURE	VGSI and RNAV glidepath not coincident (VGSI angle 3.00/TCH 69).	NOTBE
------	-------	--	-------



ELEV 236	TDZE 213
----------	----------



CATEGORY	A	B	C	D
LPV DA	503/50 290 (300-1)			
LNAV/VNAV DA	709-1¼ 496 (500-1¼)			
LNAV MDA	680/50 467 (500-1)	680/60 467 (500-1¼)	680-1½ 467 (500-1½)	
CIRCLING	740-1 504 (600-1)	860-1 624 (700-1)	1040-2¼ 804 (900-2¼)	1040-2½ 804 (900-2½)

REIL Rwy 23
TDZ/CL Rwy 11
HIRL Rwy 5-23 and 11-29