

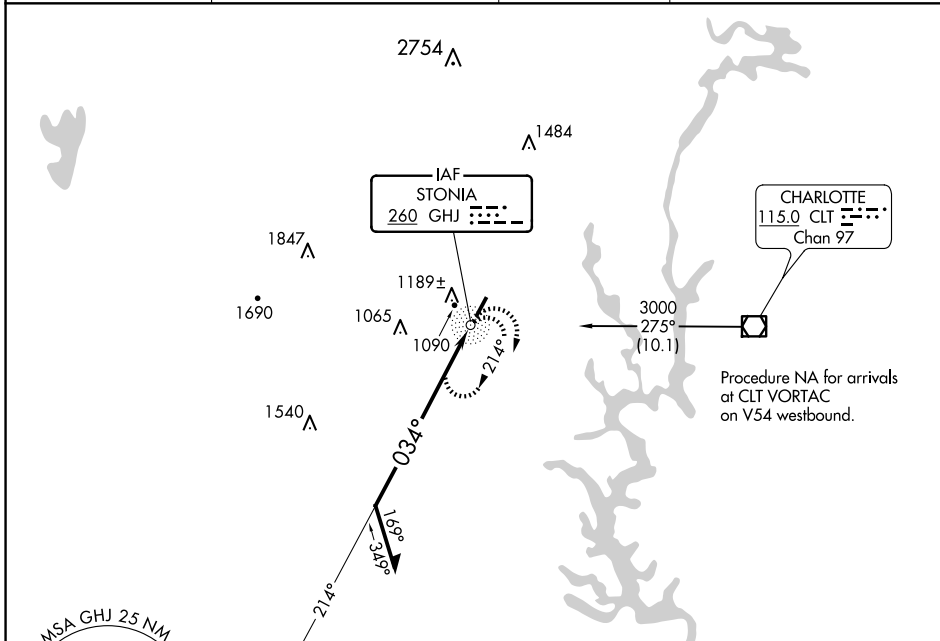
NDB GHJ <b>260</b>	APP CRS <b>034°</b>	Rwy ldg TDZE Apt Elev	<b>3769</b> <b>798</b> <b>798</b>
-----------------------	------------------------	-----------------------------	---

# NDB RWY 3

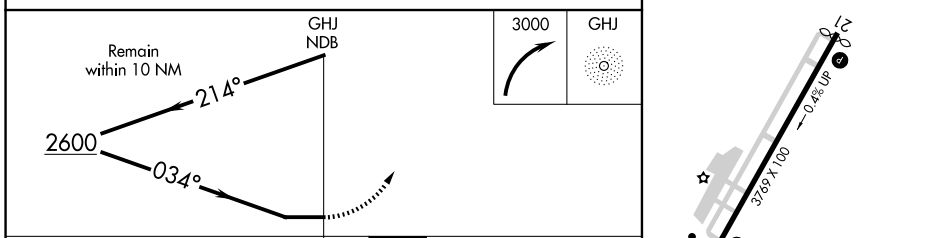
GASTONIA MUNI (AKH)

	Inop table does not apply to Cats B and C.		MISSED APPROACH: Climbing right turn to 3000 in GHJ NDB holding pattern.
	ASOS <b>135.725</b>	CHARLOTTE APP CON <b>120.05 257.2</b>	CLNC DEL <b>127.2</b>

ASOS <b>135.725</b>	CHARLOTTE APP CON <b>120.05 257.2</b>	CLNC DEL <b>127.2</b>	UNICOM <b>123.0 (CTAF) 0</b>
------------------------	--	--------------------------	---------------------------------



ELEV 798	TDZE 798
----------	----------



CATEGORY	A	B	C	D
S-3	1540- <sup>3</sup> / <sub>4</sub> 742 (800- <sup>3</sup> / <sub>4</sub> )	1540-1 <sup>1</sup> / <sub>4</sub> 742 (800-1 <sup>1</sup> / <sub>4</sub> )	1540-2 <sup>1</sup> / <sub>4</sub> 742 (800-2 <sup>1</sup> / <sub>4</sub> )	NA
CIRCLING	1540-1 742 (800-1)	1540-1 <sup>1</sup> / <sub>4</sub> 742 (800-1 <sup>1</sup> / <sub>4</sub> )	1540-2 <sup>1</sup> / <sub>4</sub> 742 (800-2 <sup>1</sup> / <sub>4</sub> )	NA

SE-2, 15 MAY 2025 to 12 JUN 2025

SE-2, 15 MAY 2025 to 12 JUN 2025