

| | | |
|-------------|----------|-------------|
| APP CRS | Rwy Idg | 3201 |
| 052° | TDZE | 84 |
| | Apt Elev | 85 |

RNAV (GPS) RWY 5

ST GEORGE (6J2)

▼ DME/DME RNP-0.3 NA. Helicopter visibility reduction below 1 SM NA. Use Summerville altimeter setting; when not received, use Charleston altimeter setting and increase all MDAs 40 feet, increase LNAV and Circling Cat C visibility ¼ mile, increase LNAV and Circling Cat D visibility ½ mile. Procedure NA at night.

▲ NA

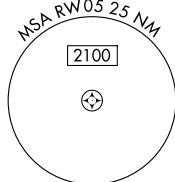
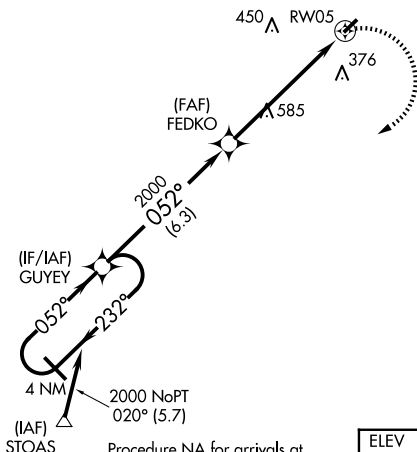
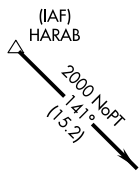
MISSED APPROACH: Climbing right turn to 2000 direct GUYEY and hold.

CHARLESTON APP CON
120.7 306.925

UNICOM
122.8 (CTAF)

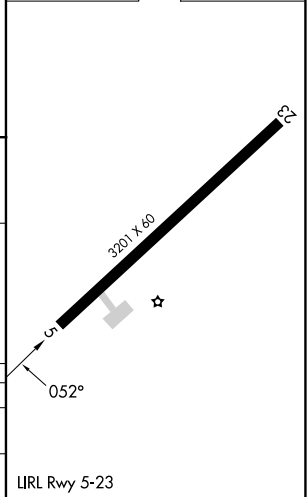
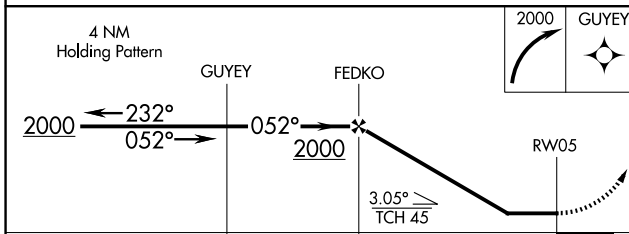
A 648

Procedure NA for arrivals at HARAB on V18 Northwest bound.



Procedure NA for arrivals at STOAS on V3 Southbound.

| | | | |
|------|----|------|----|
| ELEV | 85 | TDZE | 84 |
|------|----|------|----|



| CATEGORY | A | B | C | D |
|----------|---------------------|---------------------|---------------------|---------------------|
| LNAV MDA | 940-1¼ 856 (900-1¼) | 940-2½ 856 (900-2½) | 940-2¾ 856 (900-2¾) | 940-2¾ 856 (900-2¾) |
| CIRCLING | 940-1¼ 855 (900-1¼) | 940-2½ 855 (900-2½) | 940-2¾ 855 (900-2¾) | 940-2¾ 855 (900-2¾) |

SE-2, 15 MAY 2025 to 12 JUN 2025

SE-2, 15 MAY 2025 to 12 JUN 2025