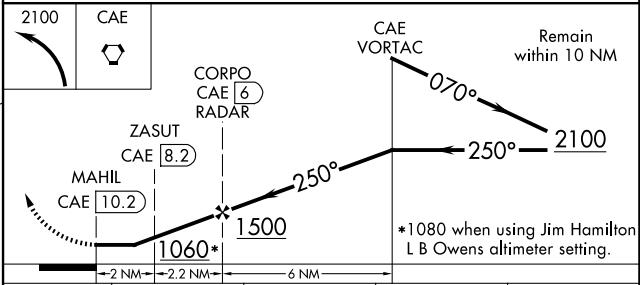
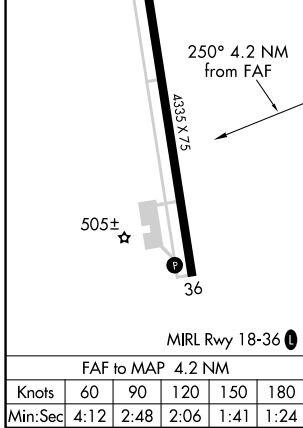
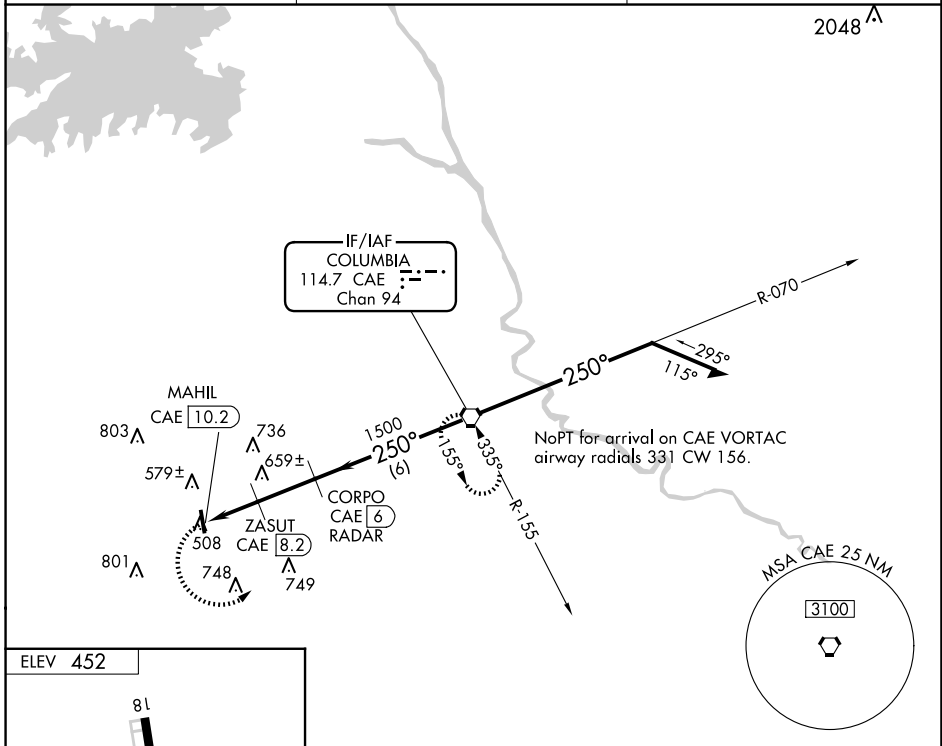


VORTAC CAE <b>114.7</b> Chan <b>94</b>	APP CRS <b>250°</b>	Rwy Idg TDZE Apt Elev	<b>N/A</b> <b>N/A</b> <b>452</b>
--	------------------------	-----------------------------	--

**VOR-A**  
LEXINGTON COUNTY (6J0)

DME or RADAR required.		MISSED APPROACH: Climbing left turn to 2100 direct CAE VORTAC and hold.
<p>Use Columbia Metro altimeter setting; when not received, use Jim Hamilton L B Owens altimeter setting and increase all MDA 20 feet.</p>		
CAE ASOS <b>120.15</b>	COLUMBIA APP CON <b>124.15 338.2</b>	UNICOM <b>123.0</b> (CTAF) <b>0</b>



CATEGORY	A	B	C	D
CIRCLING	1060-1	608 (700-1)	NA	
ZASUT FIX MINIMUMS				
CIRCLING	980-1 528 (600-1)	1060-1 608 (700-1)	NA	

SE-2, 15 MAY 2025 to 12 JUN 2025

SE-2, 15 MAY 2025 to 12 JUN 2025