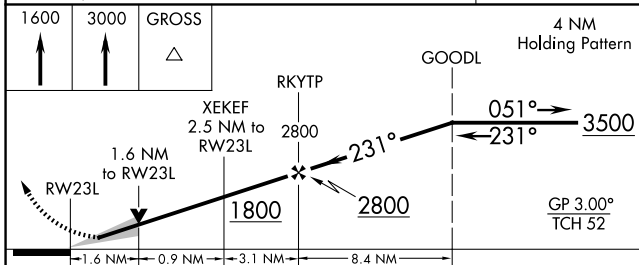
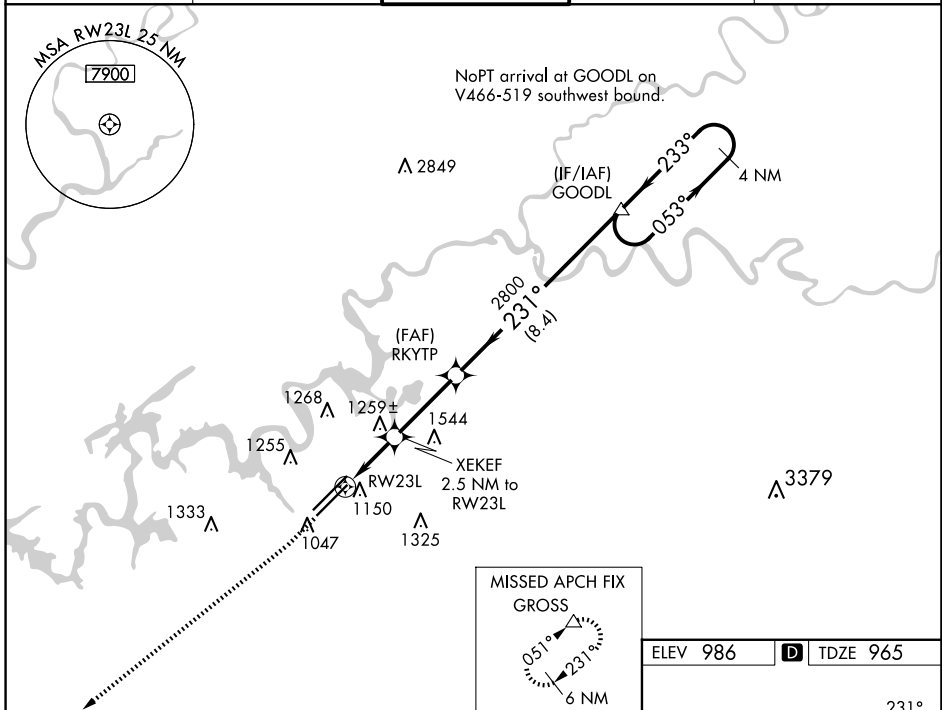


WAAS CH <b>90210</b> <b>W23B</b>	APP CRS <b>231°</b>	Rwy Idg TDZE Apt Elev	<b>8600</b> <b>965</b> <b>986</b>
--	------------------------	-----------------------------	---

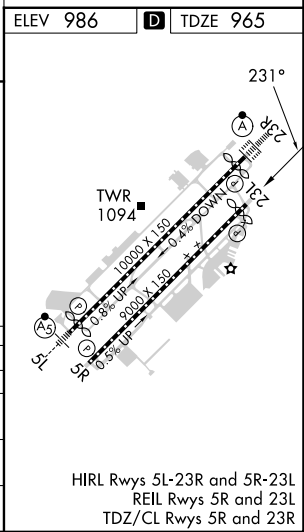
# RNAV (GPS) RWY 23L

MC GHEE TYSON (T'YS)

RNP APCH - GPS.		MISSED APPROACH: Climb to 1600 then climb to 3000 direct GROSS and hold.				
<p>⚠ For uncompensated Baro-VNAV systems, LNAV/VNAV NA below -10° C or above 54° C.</p>		ATIS <b>128.35</b>	KNOXVILLE APP CON <b>123.9 360.8</b>	KNOXVILLE TOWER <b>121.2 257.8</b>	GND CON <b>121.9 348.6</b>	CLNC DEL <b>121.65</b>



↑ 1600	↑ 3000	△ GROSS	4 NM Holding Pattern			
RWY 23L		XEKEF 2.5 NM to RWY 23L		RKYTP 2800		GOODL
1.6 NM		0.9 NM		3.1 NM		8.4 NM
CATEGORY	A	B	C	D		
LPV DA	1165/40		200 (200-¾)			
LNAV/VNAV DA	1383-1⅜		418 (500-1⅝)			
LNAV MDA	1520/55	555 (600-1)		1520-1⅝	555 (600-1⅝)	
Ⓢ CIRCLING	1520-1 534 (600-1)	1620-1 634 (700-1)	1660-2 674 (700-2)	1900-3 914 (1000-3)		



SE-1, 15 MAY 2025 to 12 JUN 2025

SE-1, 15 MAY 2025 to 12 JUN 2025

HIRL Rwy 5L-23R and 5R-23L  
REIL Rwy 5R and 23L  
TDZ/CL Rwy 5R and 23R