

LOC I-TRI 109.9	APP CRS 230°	Rwy Idg 8000
		TDZE 1518
		Apt Elev 1519

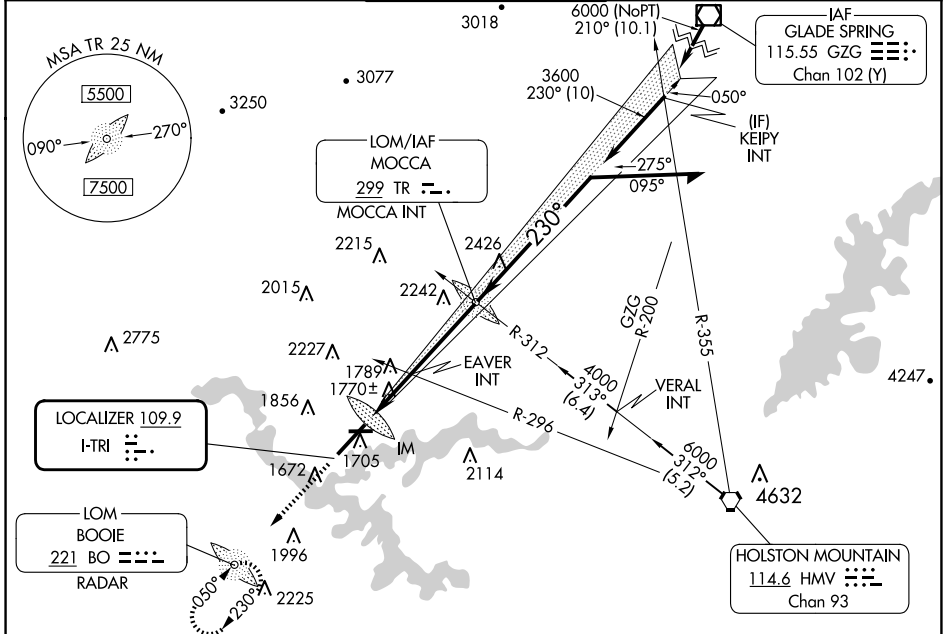
ILS or LOC RWY 23

TRI-CITIES (TRI)

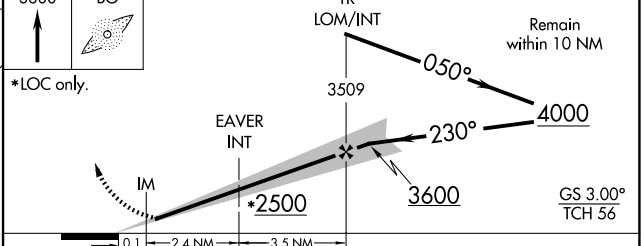
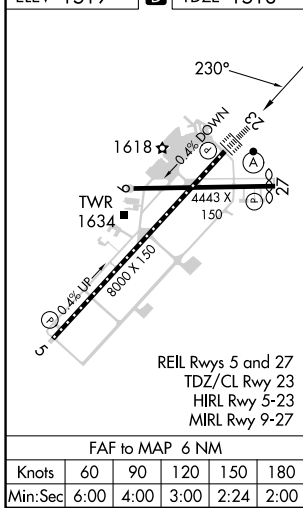
ADF or RADAR required.

⚠ Circling to Rwy 9 NA at night. Circling NA northwest of Rws 9 and 23. CAUTION: Air traffic control tower 1634 feet MSL located 940 feet right of runway centerline 357 feet from runway threshold. When control tower closed: S-ILS 23 increase visibilities to RVR 4000 all Cats and S-LOC 23 increase visibilities ½ SM all Cats.

ALSIF-2 (A)	MISSED APPROACH: Climb to 3800 direct BOOIE LOM/RADAR and hold.			
ATIS 118.25	TRI-CITY APP CON ★ 134.425 349.0	TRI-CITY TOWER ★ 119.5 (CTAF) 257.8	GND CON 121.7 348.6	UNICOM 122.95



ELEV 1519	D	TDZE 1518	3800	BO
-----------	----------	-----------	------	----



CATEGORY	A	B	C	D
S-ILS 23	1718/18 200 (200-½)			
S-LOC 23	2500/40 982 (1000-¾)	2500-1 982 (1000-1)	2500-2½	982 (1000-2½)
C CIRCLING	2500-1¼ 981 (1000-1¼)	2500-1½ 981 (1000-1½)	2500-3 981 (1000-3)	
EAVER FIX MINIMUMS (DUAL VOR RECEIVERS REQUIRED)				
S-LOC 23	2020/24 502 (600-½)		2020/55 502 (600-1)	
C CIRCLING	2120-1 601 (700-1)	2180-1 661 (700-1)	2320-2¼ 801 (900-2¼)	2500-3 981 (1000-3)

SE-1, 15 MAY 2025 to 12 JUN 2025

SE-1, 15 MAY 2025 to 12 JUN 2025