

LOC/DME I-JJM <b>110.55</b> Chan <b>42 (Y)</b>	APP CRS <b>350°</b>	Rwy Idg TDZE Apt Elev	<b>7800</b> <b>479</b> <b>501</b>
--	------------------------	-----------------------------	---

# ILS or LOC RWY 35R

LOUISVILLE MUHAMMAD ALI INTL (SDF)

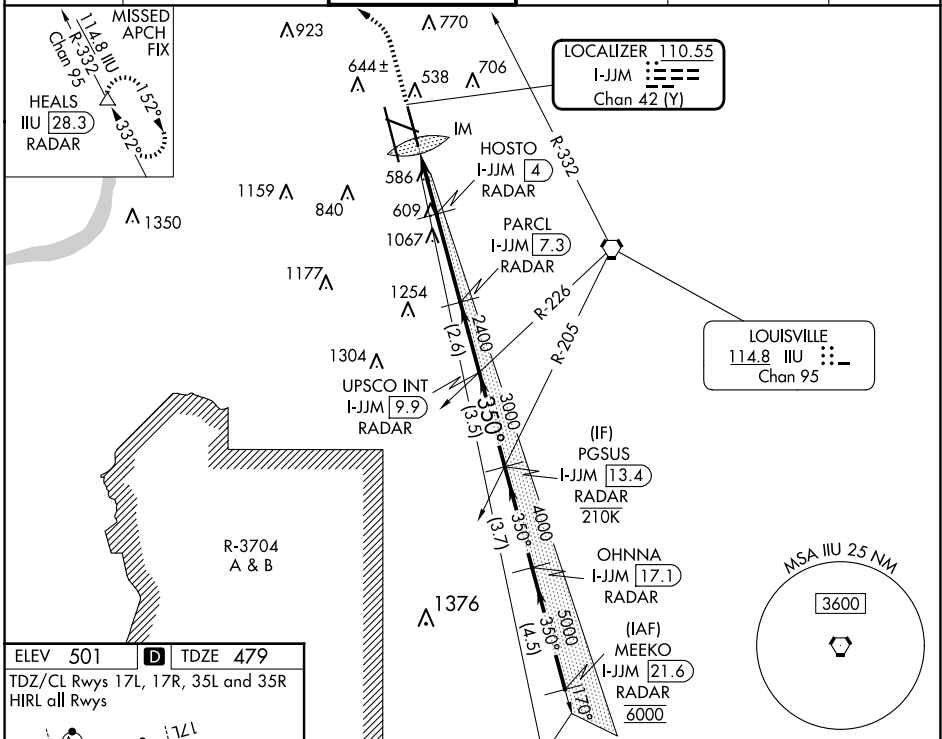
DME or RADAR required for LOC only.

Simultaneous approach authorized. Circling Rwy 11 NA at night.  
For inop ALS, increase LOC Cat C/D to 5000 RVR.

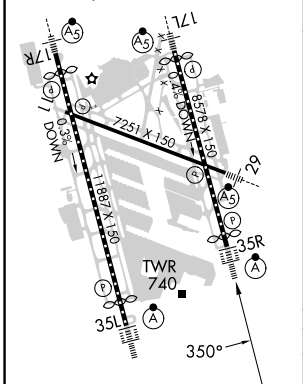
ALSF-2

MISSED APPROACH: Climb to 2500 then climbing left turn to 4000 on heading 350° and on IJU VORTAC R-332 to HEALS/28.3 DME/RADAR and hold.

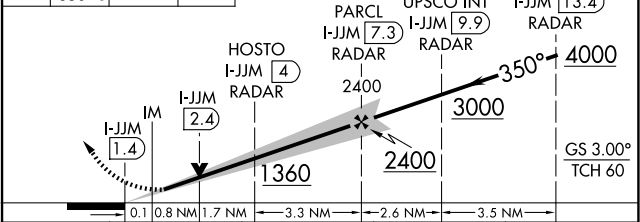
D-ATIS <b>118.725</b>	LOUISVILLE APP CON <b>132.075 327.0</b>	LOUISVILLE TOWER <b>124.2 257.8</b>	GND CON <b>121.7 348.6</b>	CLNC DEL <b>126.1 275.8</b>	CPDLC
--------------------------	--	--	-------------------------------	--------------------------------	-------



ELEV 501	TDZE 479
TDZ/CL Rwy 17L, 17R, 35L and 35R	
HIRL all Rwy	



2500	4000	HEALS	VGSI and ILS glidepath not coincident (VGSI Angle 3.00/TCH 71).
↑	hdg 350°	IJU R-332	△



CATEGORY	A	B	C	D
S-ILS 35R	679/18 200 (200-½)			
S-LOC 35R	840/24	361 (400-½)	840/35	361 (400-¾)
ⓐ CIRCLING	1040-1 539 (600-1)	1140-1 639 (700-1)	1160-1¾ 659 (700-1¾)	1400-3 899 (900-3)

SE-1, 15 MAY 2025 to 12 JUN 2025

SE-1, 15 MAY 2025 to 12 JUN 2025