

LOC/DME I-PKI 111.95	APP CRS 170°	Rwy ldg 7800
Chan 56 (Y)	TDZE 499	Apt Elev 501


ILS or LOC RWY 17L

LOUISVILLE MUHAMMAD ALI INTL (SDF)

DME or RADAR required. RADAR required for procedure entry.

Simultaneous approach authorized. Circling Rwy 11 NA at night. For inop ALS, increase S-LOC 17L Cat C/D visibility to 1 3/8 SM.

MALSR



MISSED APPROACH: Climb to 1000 then climbing left turn to 3000 direct IJU VORTAC, continue climb-in-hold to 3000.

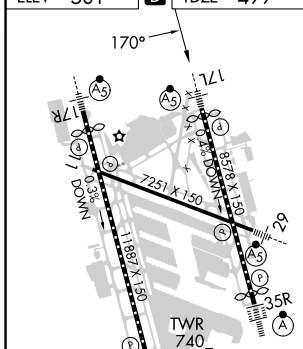
D-ATIS 118.725	LOUISVILLE APP CON 132.075 327.0	LOUISVILLE TOWER 124.2 257.8	GND CON 121.7 348.6	CLNC DEL 126.1 275.8	CPDLC
--------------------------	--	--	-------------------------------	--------------------------------	-------



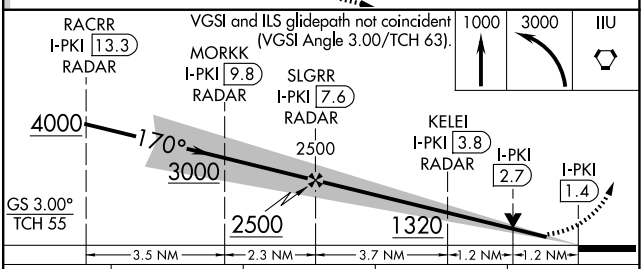
SE-1, 15 MAY 2025 to 12 JUN 2025

SE-1, 15 MAY 2025 to 12 JUN 2025

ELEV 501	D	TDZE 499
----------	----------	----------



FAF to MAP 6.1 NM					
Knots	60	90	120	150	180
Min:Sec	6:06	4:04	3:03	2:26	2:02



CATEGORY	A	B	C	D
S-ILS 17L	699/18		200 (200-1/2)	
S-LOC 17L	1000/24	501 (500-1/2)	1000/55	501 (500-1)
C CIRCLING	1040-1 539 (600-1)	1140-1 639 (700-1)	1160-1 3/4 659 (700-1 3/4)	1400-3 899 (900-3)