

WAAS CH 99433 W23A	APP CRS 233°	Rwy Idg TDZE Apt Elev	5000 1026 1032
--	------------------------	-----------------------------	---

RNAV (GPS) RWY 23

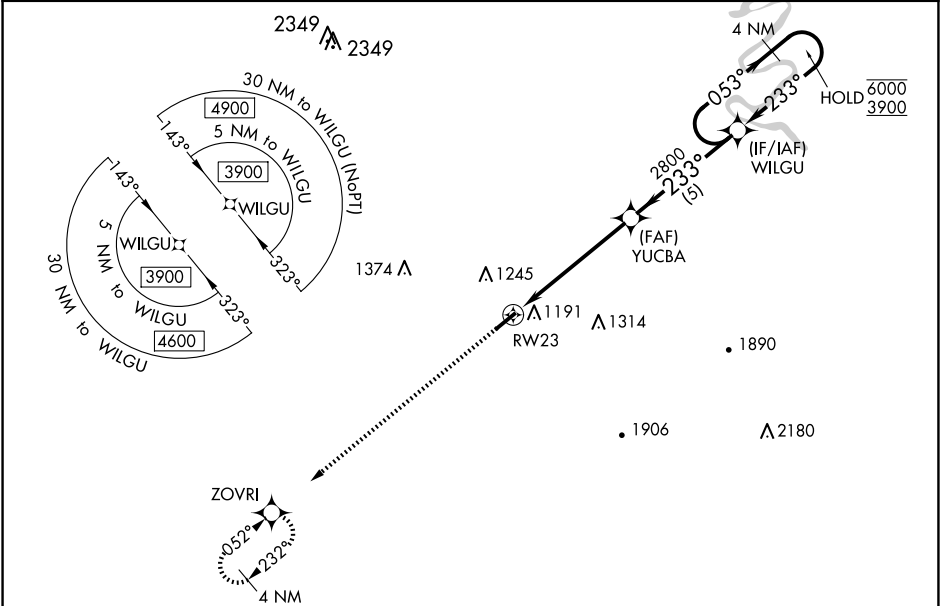
WARREN COUNTY MEML (RNC)

RNP APCH - GPS.

⚠ Circling Rwy 5 NA at night. Rwy 23 helicopter visibility reduction below 3/4 SM NA.
⚠ For uncompensated Baro-VNAV systems, LNAV/VNAV NA below -17°C or above 54°C.

MISSED APPROACH: Climb to 3900 direct ZOVRI and hold, continue climb-in-hold to 3900.

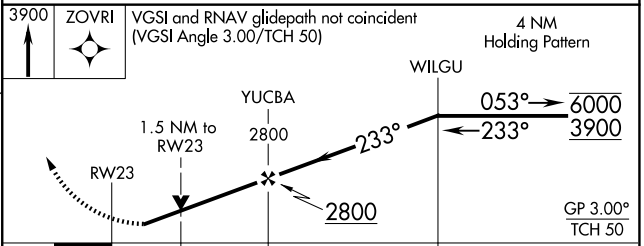
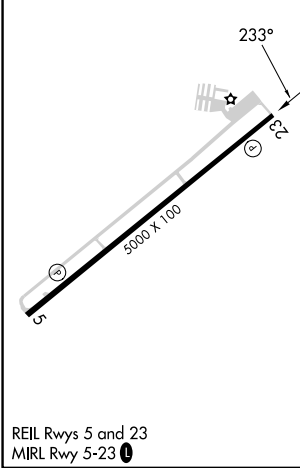
AWOS-3 135.525	MEMPHIS CENTER 128.15 323.125	UNICOM 123.05 (CTAF) 0
--------------------------	---	----------------------------------



SE-1, 15 MAY 2025 to 12 JUN 2025

SE-1, 15 MAY 2025 to 12 JUN 2025

ELEV 1032	TDZE 1026
-----------	-----------



CATEGORY	A	B	C	D
LPV DA		1312-7/8	286 (300-7/8)	
LNAV/VNAV DA		1400-1	374 (400-1)	
LNAV MDA	1520-1	494 (500-1)	1520-1 3/8	494 (500-1 3/8)
C CIRCLING	1600-1	568 (600-1)	1600-1 1/2	1620-2
			568 (600-1 1/2)	588 (600-2)