

APP CRS	Rwy Idg	6000
055°	TDZE	670
	Apt Elev	681

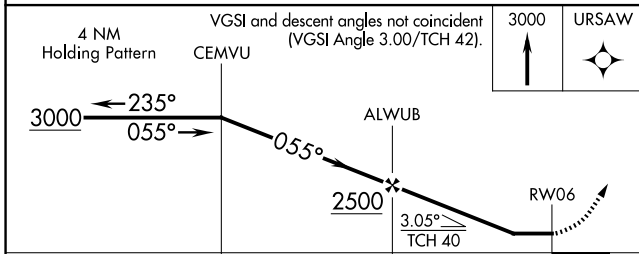
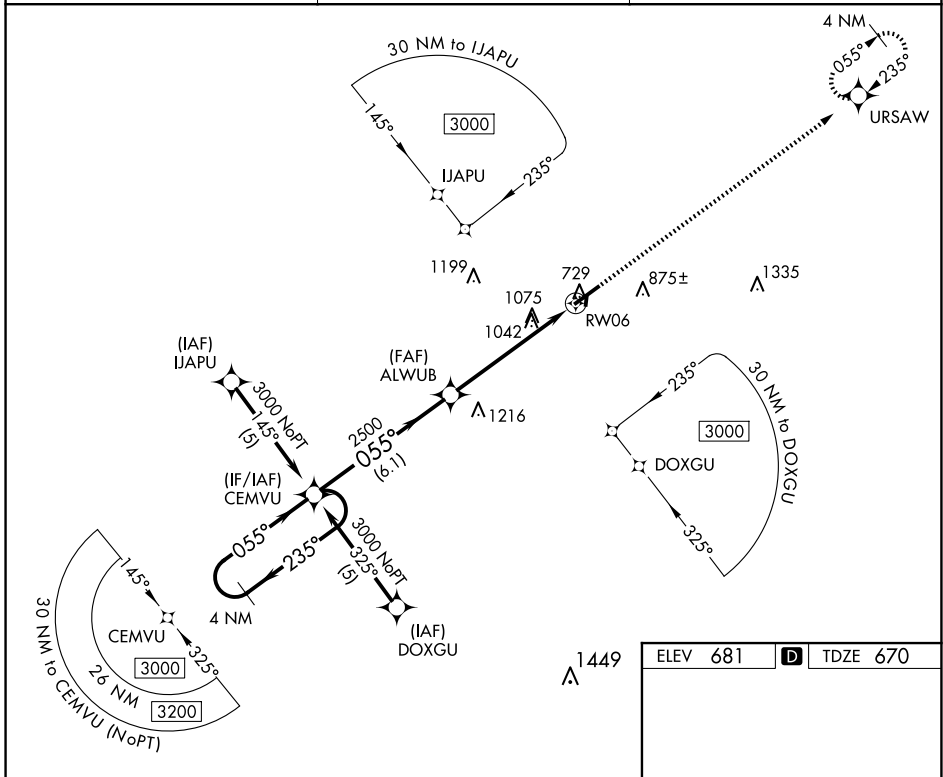
RNAV (GPS) RWY 6

MAURY COUNTY RGNL (MRC)

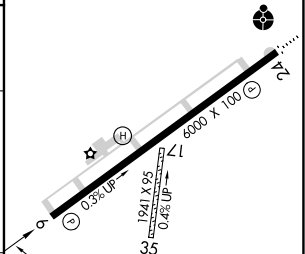
⚠ DME/DME RNP-0.3 NA. Visibility reduction by helicopters NA. When local altimeter setting not received, use Nashville Intl altimeter setting; increase all MDA 120 feet and increase LNAV Cat B visibility ¼ SM, Cats C and D visibility ½ SM, increase Circling Cat C visibility ½ SM.

⚠ MISSED APPROACH: Climb to 3000 direct URSAW and hold.

AWOS-3 128.625	MEMPHIS CENTER 125.85 379.25	UNICOM 122.8 (CTAF) 0
--------------------------	--	---------------------------------



ELEV 681	D	TDZE 670
----------	----------	----------



CATEGORY	A	B	C	D
LNAV MDA	1340-1	670 (700-1)	1340-1¾ 670 (700-1¾)	1340-2 670 (700-2)
CIRCLING	1340-1 659 (700-1)	1360-1 679 (700-1)	1380-2 699 (700-2)	1620-3 939 (1000-3)

MIRL Rwy 6-24
REIL Rwy 6
REIL Rwy 24 **0**

SE-1, 15 MAY 2025 to 12 JUN 2025

SE-1, 15 MAY 2025 to 12 JUN 2025