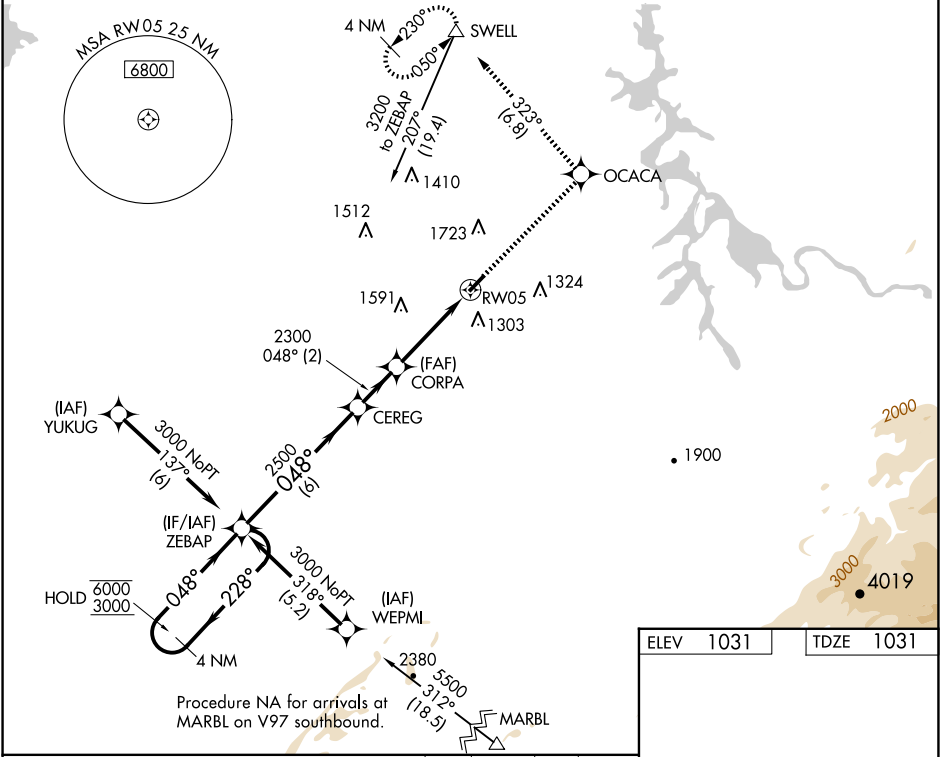


WAAS CH <b>99531</b>	APP CRS <b>048°</b>	Rwy Idg TDZE Apt Elev	<b>3643</b> <b>1031</b> <b>1031</b>
<b>W05A</b>			

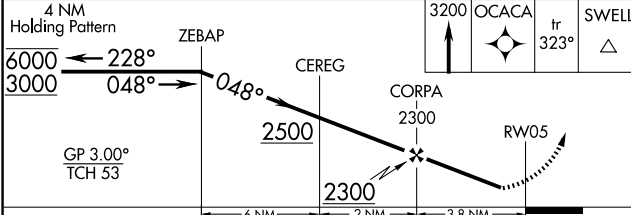
# RNAV (GPS) RWY 5

MONROE COUNTY (MNV)

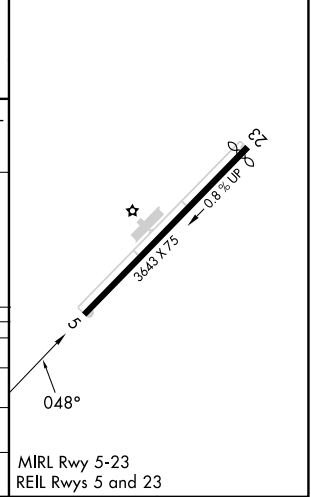
RNP APCH - GPS.		MISSED APPROACH: Climb to 3200 direct OCACA and on track 323° to SWELL and hold.
⚠️ Circling NA NW of Rwy 5-23. Procedure NA at night. Rwy 5 helicopter visibility reduction below 1 SM NA. For uncompensated Baro-VNAV systems, LNAV/VNAV NA below -17°C or above 54°C.		
AWOS-3 <b>118.475</b>	KNOXVILLE APP CON <b>123.9 353.6</b>	UNICOM <b>123.0</b> (CTAF)



ELEV 1031	TDZE 1031
-----------	-----------



CATEGORY	A	B	C	D
LPV DA	1395-1	364 (400-1)		NA
LNAV/VNAV DA	1538-1 3/8	507 (600-1 3/8)		NA
LNAV MDA	1680-1 649 (700-1)	1680-1 3/8 649 (700-1 3/8)		NA
<b>C</b> CIRCLING	1680-1 649 (700-1)	1680-1 3/8 649 (700-1 3/8)		NA



SE-1, 15 MAY 2025 to 12 JUN 2025

SE-1, 15 MAY 2025 to 12 JUN 2025