

# RNAV (GPS) RWY 2

JACKSON RGNL (MKL)

WAAS CH <b>93511</b> <b>W02A</b>	APP CRS <b>023°</b>	Rwy Idg <b>6005</b> TDZE <b>433</b> Apt Elev <b>433</b>
--	------------------------	---

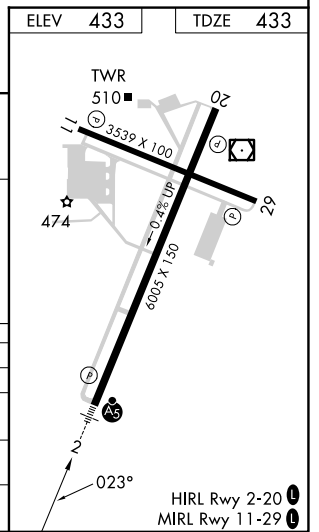
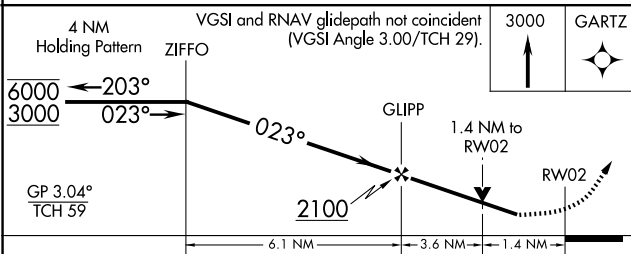
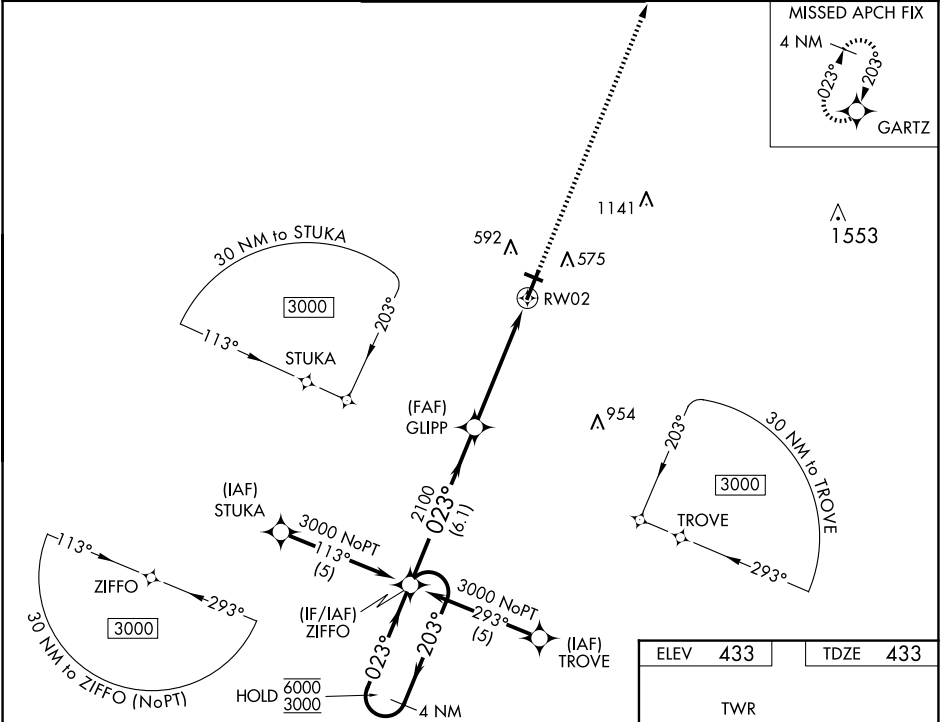
RNP APCH - GPS.

▼ For uncompensated Baro-VNAV systems, LNAV/VNAV NA below -15°C or above 48°C.  
▲ For inop ALS, increase visibility LNAV Cats A/B to 1 SM, and Cats C/D to 1 ½ SM.

MALSR

MISSED APPROACH: Climb to 3000 direct GARTZ and hold.

ASOS <b>119.325</b>	MEMPHIS CENTER <b>134.65 316.15</b>	JACKSON TOWER ★ <b>127.15 (CTAF) 0 249.95</b>	GND CON <b>120.9</b>	UNICOM <b>122.95</b>
------------------------	--	--	-------------------------	-------------------------



SE-1, 15 MAY 2025 to 12 JUN 2025

SE-1, 15 MAY 2025 to 12 JUN 2025