

WAAS CH 63106 W09A	APP CRS 093°	Rwy Idg TDZE Apt Elev	8946 259 341
---------------------------------	------------------------	-----------------------------	---

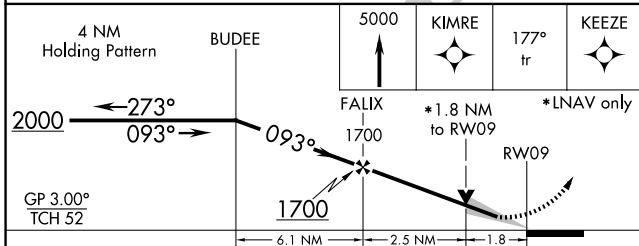
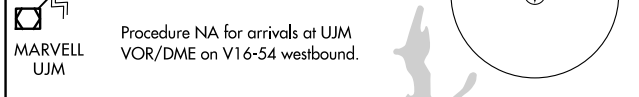
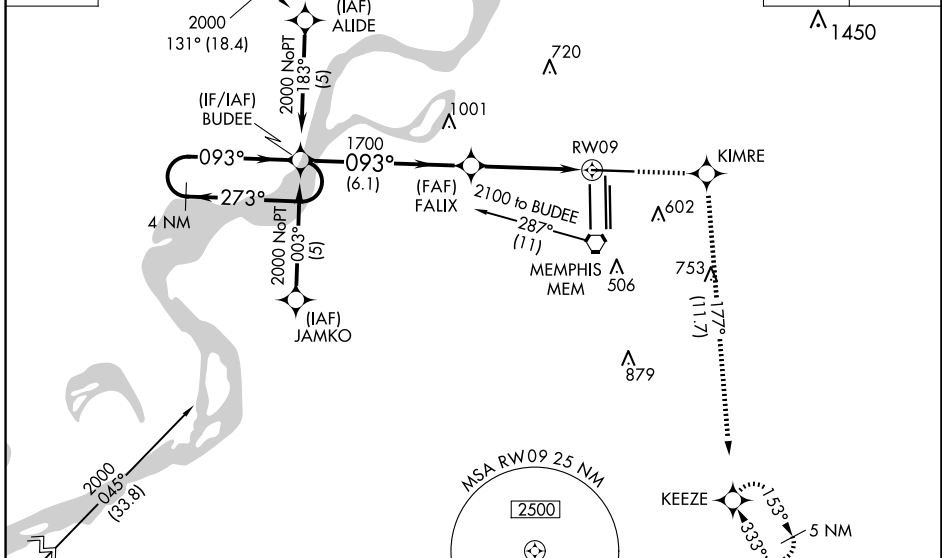
RNAV (GPS) RWY 9

MEMPHIS INTL (MEM)

<p>⚠ For uncompensated Baro-VNAV systems, LNAV/VNAV NA below -15°C (5°F) or above 48°C (118°F). DME/DME RNP-0.3 NA. For inop ALS, increase LPV all Cats visibility to RVR 5000.</p>	<p>MALSR</p>	<p>MISSED APPROACH: Climb to 5000 direct KIMRE and on 177° track to KEEZE and hold, continue climb-in-hold to 5000.</p>
--	--------------	---

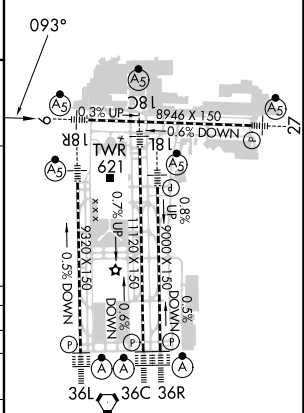
MEMPHIS APP CON	MEMPHIS TOWER	GND CON
119.1 291.6 (176°-355°)	(Rwy 9-27) 118.3 257.8	(Rwy 9-27) 121.0 379.2
125.8 338.3 (356°-175°)	(Rwys 18C-36C, 18L-36R) 119.7 257.8	(Rwys 18C-36C, 18L-36R) 121.9 379.2
	(Rwy 18R-36L) 128.425 257.8	(Rwy 18R-36L) 121.65 379.2

D-TIS 127.75	GILMORE GQE	Procedure NA for arrivals at GQE VOR/DME on V159 northwest bound.	1337 Δ	CLNC DEL 125.2	CPDLC
------------------------	-------------	---	---------------	--------------------------	-------



CATEGORY	A	B	C	D
LPV DA	557/24 298 (300-1/2)			
LNAV/VNAV DA	782/60 523 (500-1 1/4)			
LNAV MDA	880/24 621 (600-1/2)	880/60 621 (600-1 1/4)	880-1 1/2 621 (600-1 1/2)	880-1 1/2 621 (600-1 1/2)
C CIRCLING	940-1 599 (600-1)	940-1 1/2 599 (600-1 1/2)	1020-2 1/4 679 (700-2 1/4)	1020-2 1/4 679 (700-2 1/4)

ELEV 341	D TDZE 259
----------	-------------------



TDZ/CL Rwys 18L, 18C, 18R, 36R, 36C, and 36L
HIRL all Rwys

SE-1, 15 MAY 2025 to 12 JUN 2025

SE-1, 15 MAY 2025 to 12 JUN 2025