

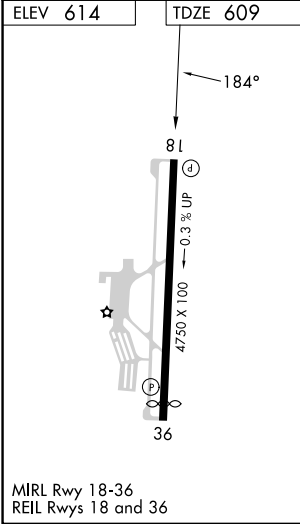
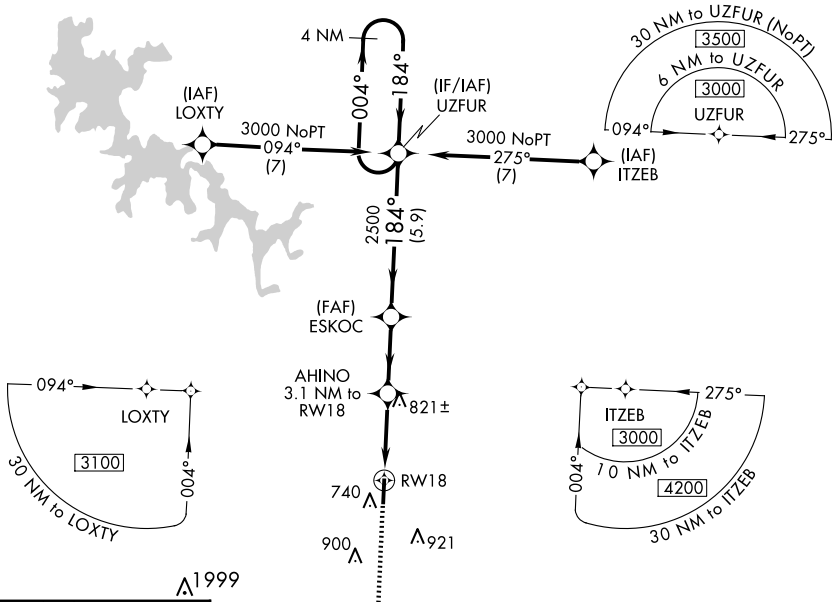
WAAS CH <b>48812</b> <b>W18A</b>	APP CRS <b>184°</b>	Rwy Idg TDZE Apt Elev	<b>4750</b> <b>609</b> <b>614</b>
--	------------------------	-----------------------------	---

# RNAV (GPS) RWY 18

MURFREESBORO MUNI (MBT)

**▽** For uncompensated Baro-VNAV systems, LNAV/VNAV NA below -16°C (4°F) or above 54°C (130°F). DME/DME RNP-0.3 NA. MISSED APPROACH: Climb to 3000 direct URACE and hold.

AWOS-3 <b>133.975</b>	NASHVILLE APP CON <b>118.4 360.7</b>	GCO <b>135.075</b>	UNICOM <b>123.075 (CTAF)</b>
--------------------------	---	-----------------------	---------------------------------



ELEV 614	TDZE 609	MISSED APCH FIX URACE 4 NM Holding Pattern	
3000 URACE	VGSI and descent angles not coincident (VGSI Angle 3.00/TCH 20).	UZFUR	4 NM Holding Pattern
*1.4 NM to RW18		*LNAV only.	
*1620		2500	
1.4 1.7 NM		2.7 NM 5.9 NM	
GP 3.00° TCH 40			
CATEGORY	A	B	C
LPV DA	859-3/4	250 (300-3/4)	NA
LNAV/VNAV DA	898-7/8	289 (300-7/8)	NA
LNAV MDA	1080-1	471 (500-1)	1080-1 3/8 471 (500-1 3/8)
CIRCLING	1080-1	466 (500-1)	1280-1 3/4 666 (700-1 3/4)

SE-1, 15 MAY 2025 to 12 JUN 2025

SE-1, 15 MAY 2025 to 12 JUN 2025