

WAAS CH 78432 W01B	APP CRS 006°	Rwy Idg TDZE Apt Elev	5002 522 522
--	------------------------	-----------------------------	---

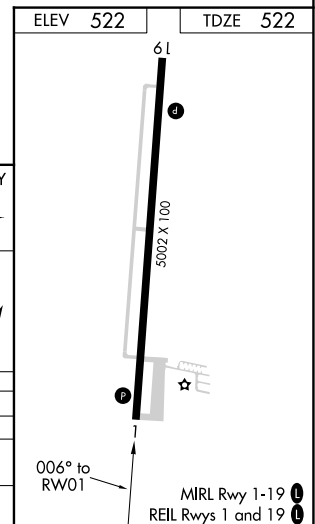
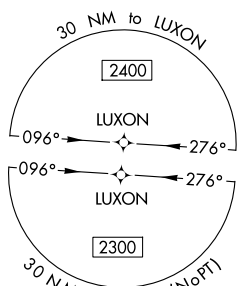
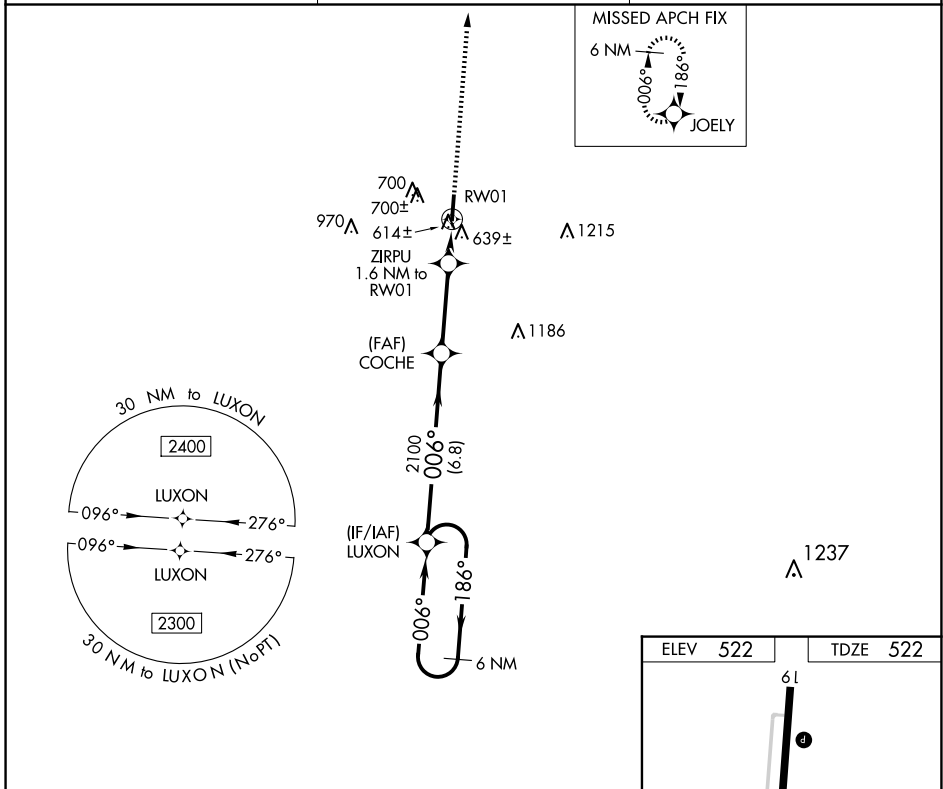
RNAV (GPS) Y RWY 1

MAYFIELD GRAVES COUNTY (M25)

NA DME/DME RNP-0.3 NA. When local altimeter setting not received, use Paducah altimeter setting and increase all MDA 80 feet and increase LP Cat C and D visibility 3/8 mile and LNAV Cat C and D visibility and Circling Cat C and D visibility 1/4 mile. Rwy 1, 19 helicopter visibility reduction below 1 SM NA. Procedure NA at night.

MISSED APPROACH: Climb to 2400 direct JOELY and hold.

AWOS-3 120.625	MEMPHIS CENTER 133.65 292.15	UNICOM 122.8 (CTAF) 0
--------------------------	--	---------------------------------



6 NM Holding Pattern		LUXON	2400	JOELY
2300	← 186°	→ 006°	006°	
		COCHE	ZIRPU	RW01
		3.00° TCH 40	1.6 NM to RW01	
		2100	1060	
		6.8 NM	3.2 NM	1.6 NM
CATEGORY	A	B	C	D
LP MDA	880-1		358 (400-1)	
LNAV MDA	900-1 378 (400-1)		900-1 1/8 378 (400-1 1/8)	
C CIRCLING	1060-1 538 (600-1)		1060-1 1/2 538 (600-1 1/2) 1280-2 1/2 758 (800-2 1/2)	

SE-1, 15 MAY 2025 to 12 JUN 2025

SE-1, 15 MAY 2025 to 12 JUN 2025