

VOR/DME LOZ <b>116.55</b> Chan <b>112 (Y)</b>	APP CRS <b>025°</b>	Rwy ldg <b>5000</b> TDZE <b>1212</b> Apt Elev <b>1212</b>
-----------------------------------------------------	------------------------	-----------------------------------------------------------------

# VOR RWY 6

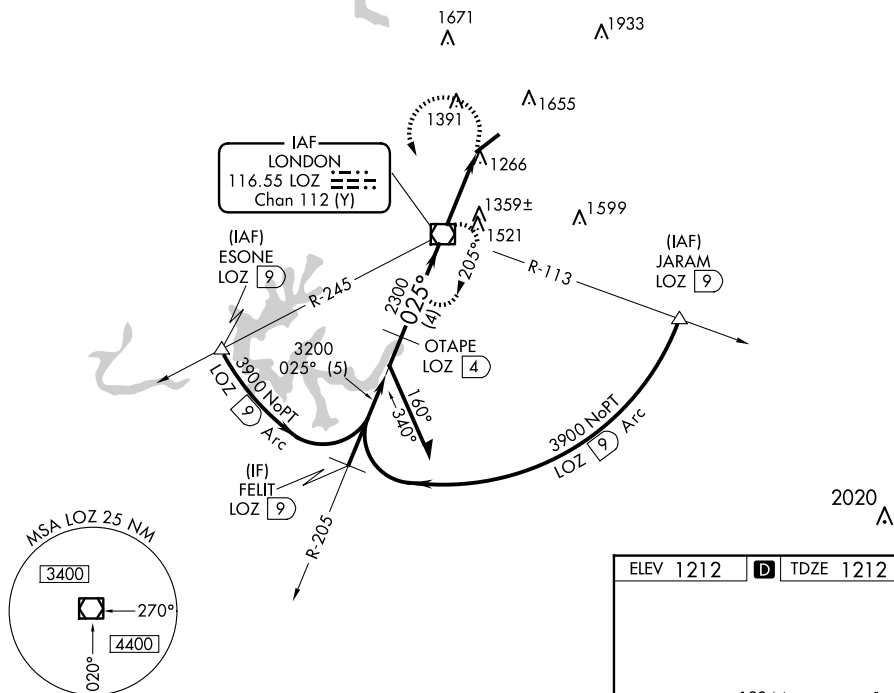
LONDON/CORBIN/MAGEE (LOZ)

**⚠** When local altimeter setting not received, use Somerset altimeter setting: increase all MDAs 100 feet and S-6 Cat C/D and Circling Cat C/D visibility ¼ SM. Night landing: Rwy 6 NA.

MISSED APPROACH: Climbing left turn to 4000 direct LOZ VOR/DME and hold, continue climb-in-hold to 4000.

ASOS <b>119.075</b>	INDIANAPOLIS CENTER <b>124.625 371.925</b>	UNICOM <b>123.0 (CTAF) 0</b>
------------------------	-----------------------------------------------	---------------------------------

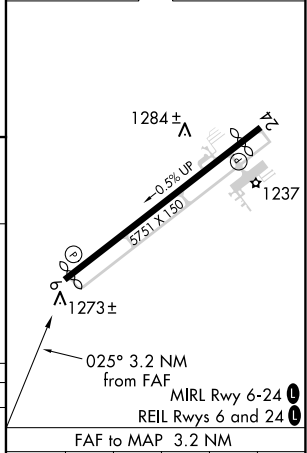
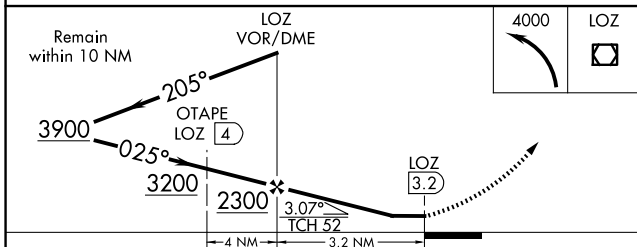
## DME REQUIRED



SE-1, 15 MAY 2025 to 12 JUN 2025

SE-1, 15 MAY 2025 to 12 JUN 2025

ELEV 1212	<b>D</b> TDZE 1212
-----------	--------------------



CATEGORY	A	B	C	D	Knots	60	90	120	150	180
S-6	1620-1	408 (500-1)	1620-1¼	408 (500-1¼)	Min:Seq	3:12	2:08	1:36	1:17	1:04
CIRCLING	1780-1 568 (600-1)	2040-1¼ 828 (900-1¼)	2040-2½ 828 (900-2½)	2040-2¾ 828 (900-2¾)	FAF to MAP 3.2 NM					

# VOR RWY 6