

LOM LK	APP CRS	Rwy Idg	<b>3125</b>
<b>414</b>	<b>348°</b>	TDZE	<b>546</b>
		Apt Elev	<b>546</b>

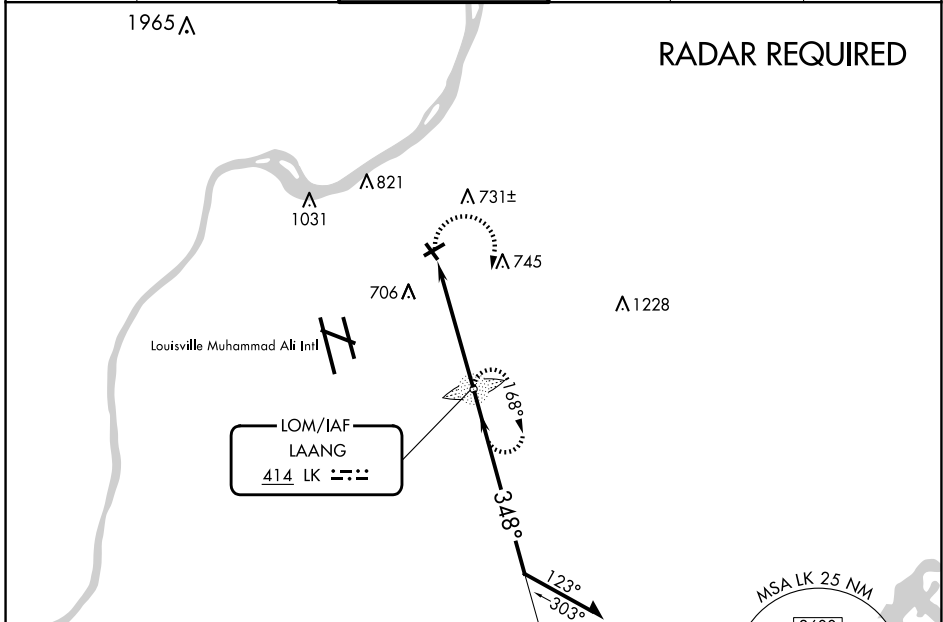
# NDB RWY 33

BOWMAN FLD (LOU)

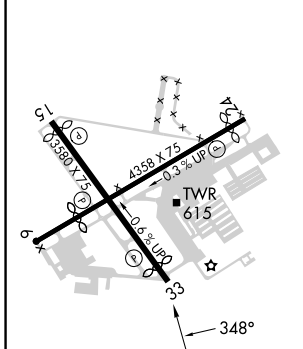
**⚠** When local altimeter setting not received, use Louisville Muhammad Ali Intl altimeter setting. Rwy 33 helicopter visibility reduction below 1 SM NA. Straight-in Rwy 33 NA at night, Circling Rwy 6, 15, 33 NA at night.

**MISSED APPROACH:** Climbing right turn to 2500 direct LAANG LOM and hold.

ATIS <b>124.15</b>	LOUISVILLE APP CON <b>132.075 327.0</b>	BOWMAN TOWER★ <b>119.5 (CTAF) 257.625</b>	GND CON <b>121.8</b>	CLNC DEL <b>118.9</b>	UNICOM <b>122.95</b>
-----------------------	--	--	-------------------------	--------------------------	-------------------------



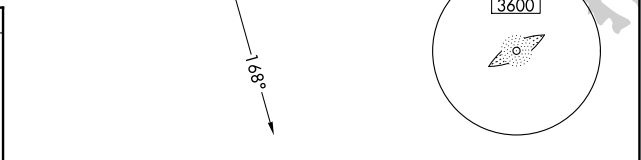
ELEV	<b>546</b>	<b>D</b>	TDZE	<b>546</b>
------	------------	----------	------	------------



REIL Rwy 24 and 33  
MIRL Rwy 6-24 and 15-33

FAF to MAP 4.9 NM

Knots	60	90	120	150	180
Min:Sec	4:54	3:16	2:27	1:58	1:38



2500	LK	LAANG LOM	Remain within 10 NM
		2200	2500
		4.9 NM	

CATEGORY	A	B	C	D
S-33	1160-1	614 (700-1)	NA	
<b>C</b> CIRCLING	1160-1	614 (700-1)	NA	

SE-1, 15 MAY 2025 to 12 JUN 2025

SE-1, 15 MAY 2025 to 12 JUN 2025