

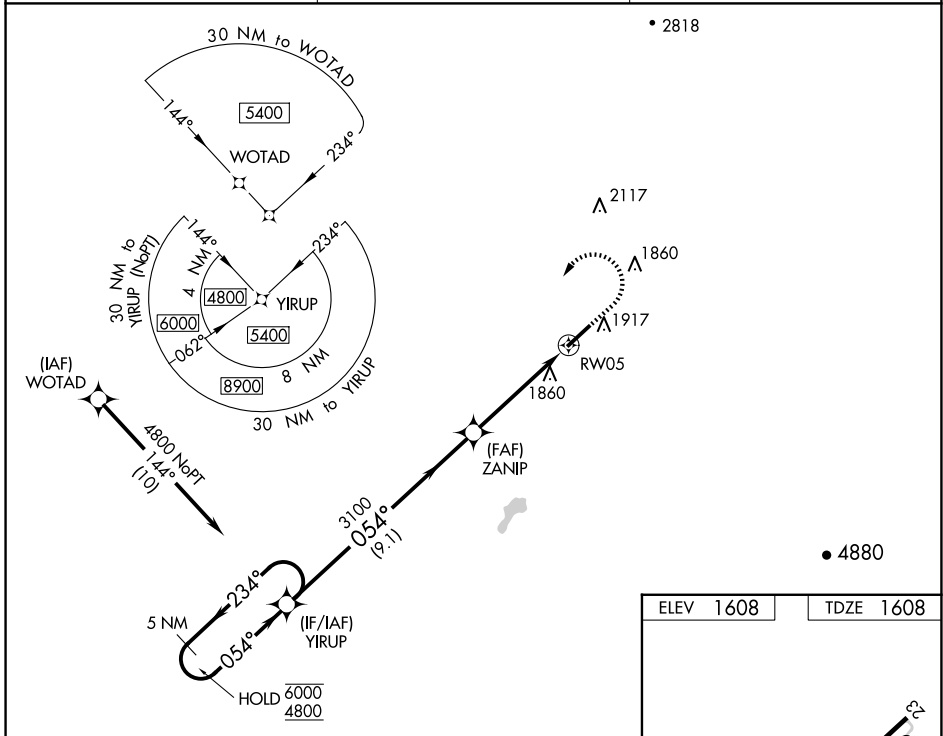
WAAS CH 58330 W05A	APP CRS 054°	Rwy Idg TDZE Apt Elev	6300 1608 1608
--	------------------------	-----------------------------	---

RNAV (GPS) RWY 5

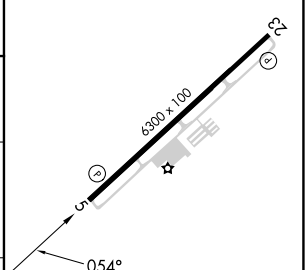
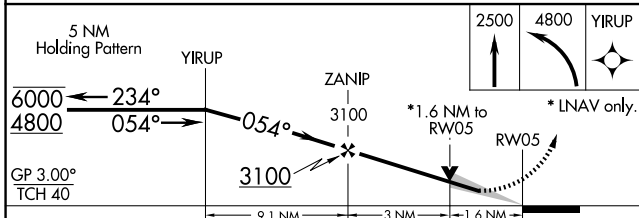
GREENEVILLE MUNI (GCY)

RNP APCH.		MISSED APPROACH: Climb to 2500 then climbing left turn to 4800 direct YIRUP and hold.
<p>▽ ▲ Circling Rwy 23 NA at night. For uncompensated Baro-VNAV systems, LNAV/VNAV NA below -18°C or above 54°C.</p>		

AWOS-3 128.425	TRI-CITY APP CON★ 128.05 317.5	UNICOM 122.7 (CTAF)
--------------------------	--	-------------------------------



ELEV 1608	TDZE 1608
-----------	-----------



GP 3.00° TCH 40	9.1 NM	3 NM	1.6 NM	
CATEGORY	A	B	C	D
LPV DA		1860-3/4	252 (300-3/4)	
LNAV/VNAV DA		2179-15/8	571 (600-15/8)	
LNAV MDA	2140-1	532 (600-1)	2140-1 1/2	532 (600-1 1/2)
C CIRCLING	2240-1	632 (700-1)	2260-1 3/4 652 (700-1 3/4)	2280-2 1/4 672 (700-2 1/4)

MIRL Rwy 5-23
REIL Rwy 5 and 23

SE-1, 15 MAY 2025 to 12 JUN 2025

SE-1, 15 MAY 2025 to 12 JUN 2025