

WAAS CH <b>61017</b> <b>W02A</b>	APP CRS <b>015°</b>	Rwy Idg <b>5500</b> TDZE <b>978</b> Apt Elev <b>984</b>
--	------------------------	---

# RNAV (GPS) RWY 2

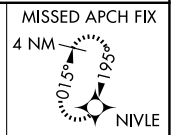
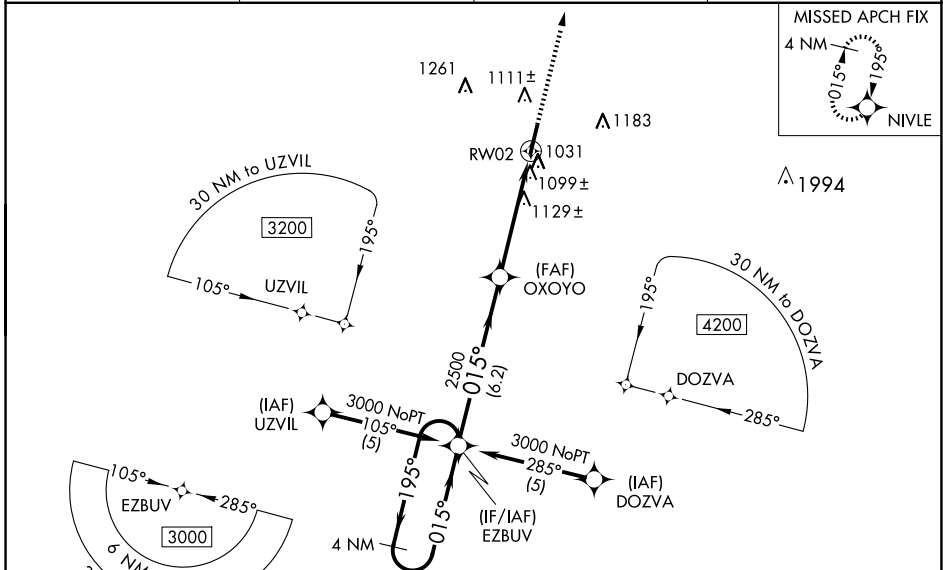
FAYETTEVILLE MUNI (FYM)

RNP APCH - GPS

Baro-VNAV and VDP NA when using Huntsville Exec Tom Sharp Jr fld altimeter setting. For uncompensated Baro-VNAV systems, LNAV/VNAV NA below -16°C (4°F) or above 46°C (114°F). Rwy 2 helicopter visibility reduction below ¼ SM NA. When local altimeter setting not received use Huntsville Exec Tom Sharp Jr fld altimeter setting and increase LPV DA to 1341 feet and all visibilities ¼ SM; LNAV/VNAV DA to 1519 feet and all visibilities ½ SM; increase all MDAs 120 feet and LNAV Cat C and Circling Cat D visibility ¼ SM, LNAV Cat D and Circling Cat C visibility ½ SM.

MISSED APPROACH: Climb to 3000 direct NIVLE and hold.

AWOS-3 <b>135.275</b>	HUNTSVILLE APP CON * <b>125.6 354.1</b>	CLNC DEL (GCO) <b>121.725</b>	UNICOM <b>122.8 (CTAF) 0</b>
--------------------------	--	----------------------------------	---------------------------------

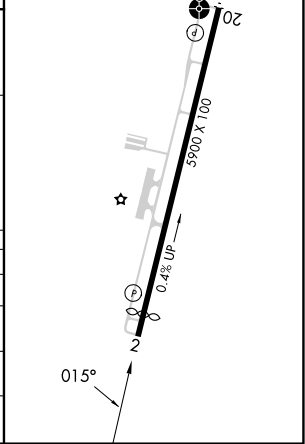
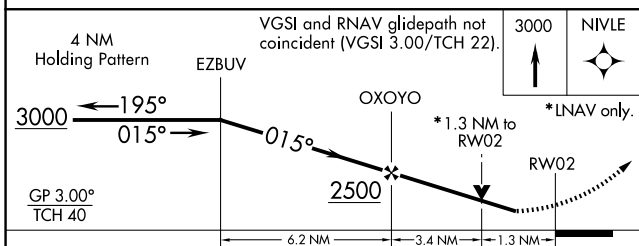


SE-1, 15 MAY 2025 to 12 JUN 2025

SE-1, 15 MAY 2025 to 12 JUN 2025

ELEV 984	<b>D</b>	TDZE 978
----------	----------	----------

MIRL Rwy 2-20  
REIL Rwys 2 and 20



CATEGORY	A	B	C	D
LPV DA		1228-1	250 (300-1)	
LNAV/VNAV DA		1406-1½	428 (500-1½)	
LNAV MDA	1380-1	402 (400-1)	1380-1¼	402 (400-1¼)
CIRCLING	1420-1 436 (500-1)	1540-1 556 (600-1)	1580-1½ 596 (600-1½)	1580-2 596 (600-2)