

| | | | |
|--|------------------------|---|-------------|
| WAAS CH 93723 W01A | APP CRS 008° | Rwy Idg TDZE 436 Apt Elev 436 | 5000 |
|--|------------------------|---|-------------|

RNAV (GPS) RWY 1

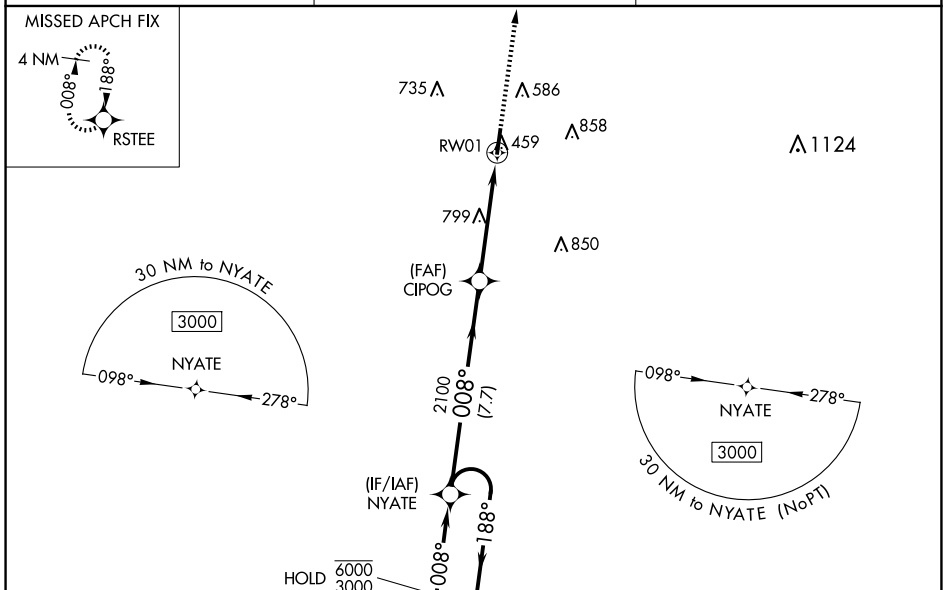
FAYETTE COUNTY (FYE)

RNP APCH - GPS.

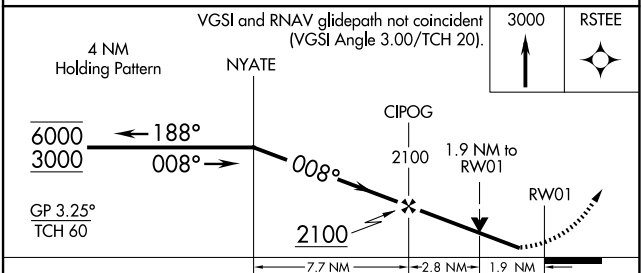
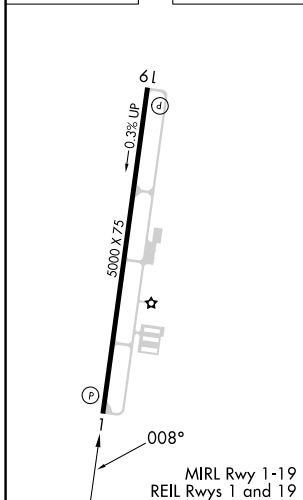
Baro-VNAV and VDP NA when using Memphis Intl altimeter setting. Rwy 1 helicopter visibility reduction below $\frac{3}{4}$ SM NA. For uncompensated Baro-VNAV systems, LNAV/VNAV NA below -15°C or above 54°C . When local altimeter setting not received, use Memphis Intl altimeter setting: increase LPV DA to 843 feet and all visibilities $\frac{1}{8}$ SM; increase LNAV/VNAV DA to 905 feet and all visibilities $\frac{1}{4}$ SM; increase all MDA 100 feet and visibility LNAV Cat C $\frac{1}{4}$ SM and Circling Cat C $\frac{1}{2}$ SM.

MISSED APPROACH: Climb to 3000 direct RSTEE and hold.

| | | |
|--------------------------|---------------------------------------|----------------------|
| AWOS-3 119.875 | MEMPHIS APP CON 125.8 338.3 | CTAF 122.9 |
|--------------------------|---------------------------------------|----------------------|



| | |
|-----------------|-----------------|
| ELEV 436 | TDZE 436 |
|-----------------|-----------------|



| CATEGORY | A | B | C | D |
|--------------|--------|---------------------|--|----|
| LPV DA | | 747-1 | 311 (400-1) | NA |
| LNAV/VNAV DA | | 809-1 $\frac{1}{8}$ | 373 (400-1 $\frac{1}{8}$) | NA |
| LNAV MDA | 1060-1 | 624 (700-1) | 1060-1 $\frac{3}{4}$ 624 (700-1 $\frac{1}{4}$) | NA |
| CIRCLING | 1060-1 | 624 (700-1) | 1160-2 724 (800-2) | NA |

SE-1, 15 MAY 2025 to 12 JUN 2025

SE-1, 15 MAY 2025 to 12 JUN 2025