

WAAS CH 82533 W21A	APP CRS 219°	Rwy Idg TDZE Apt Elev	4000 963 963
--	------------------------	-----------------------------	---

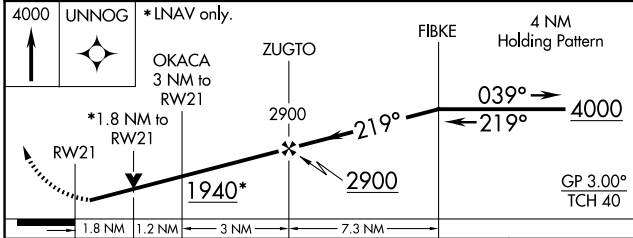
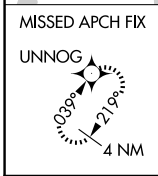
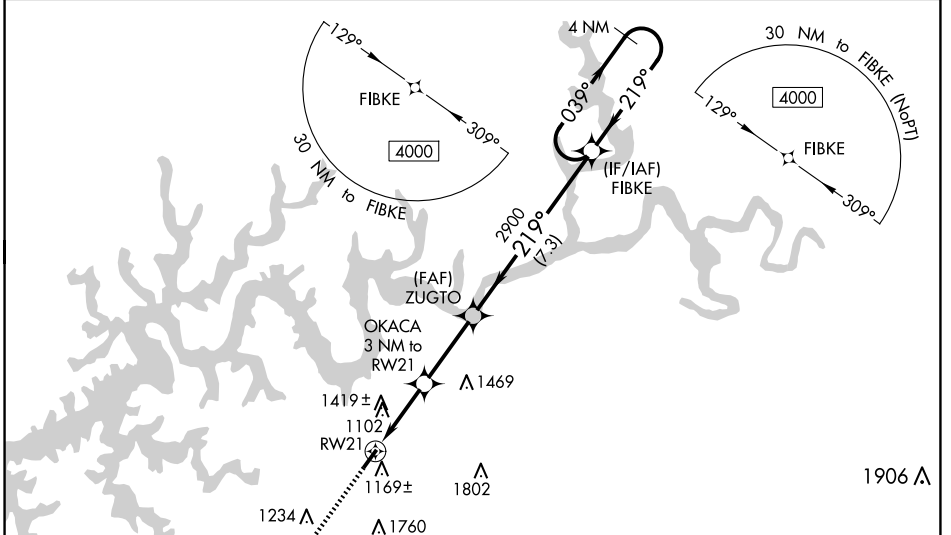
RNAV (GPS) RWY 21

WAYNE COUNTY (EKQ)

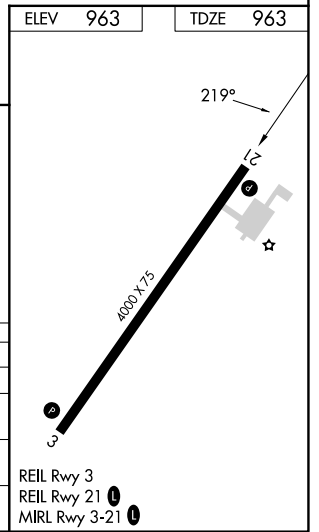
⚠ Baro-VNAV NA when using Somerset altimeter setting. For uncompensated Baro-VNAV systems, LNAV/VNAV NA below -16°C (4°F) or above 54°C (130°F). DME/DME RNP-0.3 NA. VDP NA with Somerset altimeter setting. Helicopter visibility reduction below 3/4 SM NA. When local altimeter setting not received, use Somerset altimeter setting and increase all DA 44 feet, and all MDA 60 feet; increase LPV all Cats visibility 1/2 mile and LNAV/VNAV all Cats visibility 1/2 mile. Night landing: Rwy 3 NA.

MISSED APPROACH: Climb to 4000 direct UNNOG and hold.

AWOS-3PT 118.825	INDIANAPOLIS CENTER 124.625 371.925	UNICOM 122.8 (CTAF) ①
----------------------------	---	--



CATEGORY	A	B	C	D
LPV DA	1257-1	294 (300-1)		NA
LNAV/VNAV DA	1666-2 1/2	703 (800-2 1/2)		NA
LNAV MDA	1580-1	617 (700-1)		NA
C CIRCLING	1780-1 1/4 817 (900-1 1/4)	1840-1 1/4 877 (900-1 1/4)		NA



SE-1, 15 MAY 2025 to 12 JUN 2025

SE-1, 15 MAY 2025 to 12 JUN 2025