

WAAS CH 78233 W03A	APP CRS 039°	Rwy Idg TDZE Apt Elev	4000 961 963
--	------------------------	-----------------------------	---

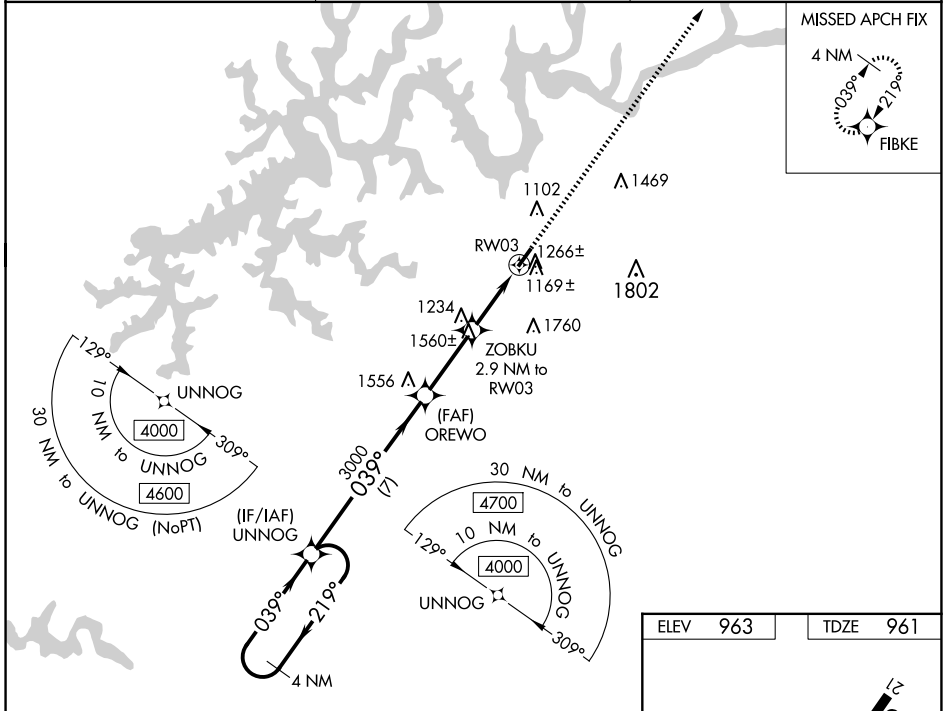
RNAV (GPS) RWY 3

WAYNE COUNTY (EKQ)

⚠ Baro-VNAV NA when using Somerset altimeter setting. For uncompensated Baro-VNAV systems, LNAV/VNAV NA below -1.6°C (4°F) or above 54°C (130°F). DME/DME RNP-0.3 NA. Helicopter visibility reduction below 1 SM NA. When local altimeter setting not received, use Somerset altimeter setting and increase all DA 44 feet and all MDA 60 feet and increase LNAV/VNAV all Cats visibility ¼ mile. Rwy 3 Straight-in and Circling minimums NA at night.

MISSED APPROACH:
Climb to 4000 direct FIBKE and hold.

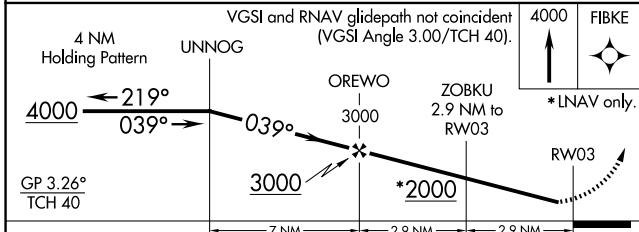
AWOS-3PT 118.825	INDIANAPOLIS CENTER 124.625 371.925	UNICOM 122.8 (CTAF)
----------------------------	---	-------------------------------



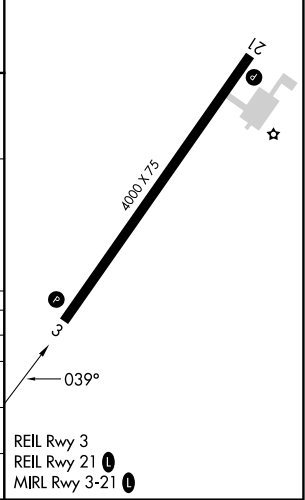
SE-1, 15 MAY 2025 to 12 JUN 2025

SE-1, 15 MAY 2025 to 12 JUN 2025

ELEV	963	TDZE	961
------	-----	------	-----



CATEGORY	A	B	C	D
LPV DA	1233-1	272 (300-1)		NA
LNAV/VNAV DA	1410-1½	449 (500-1½)		NA
LNAV MDA	1520-1	559 (600-1)		NA
C CIRCLING	1780-1¼ 817 (900-1¼)	1840-1¼ 877 (900-1¼)		NA



REIL Rwy 3
REIL Rwy 21 **①**
MIRL Rwy 3-21 **①**