

WAAS CH <b>77909</b>	APP CRS <b>W27A</b> 269°	Rwy Idg TDZE Apt Elev	<b>5503</b> <b>387</b> <b>387</b>
-------------------------	--------------------------------	-----------------------------	---

# RNAV (GPS) RWY 27

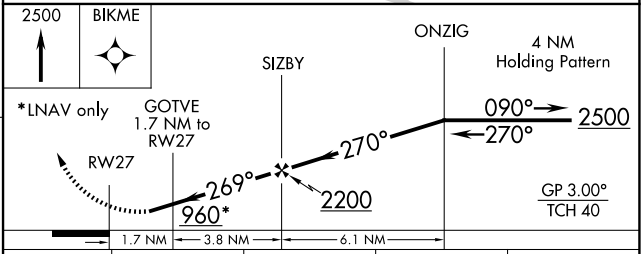
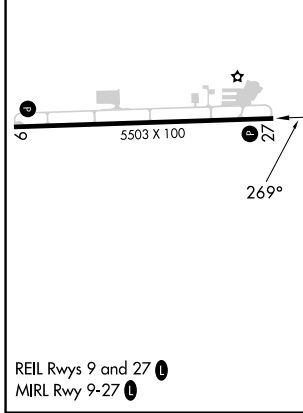
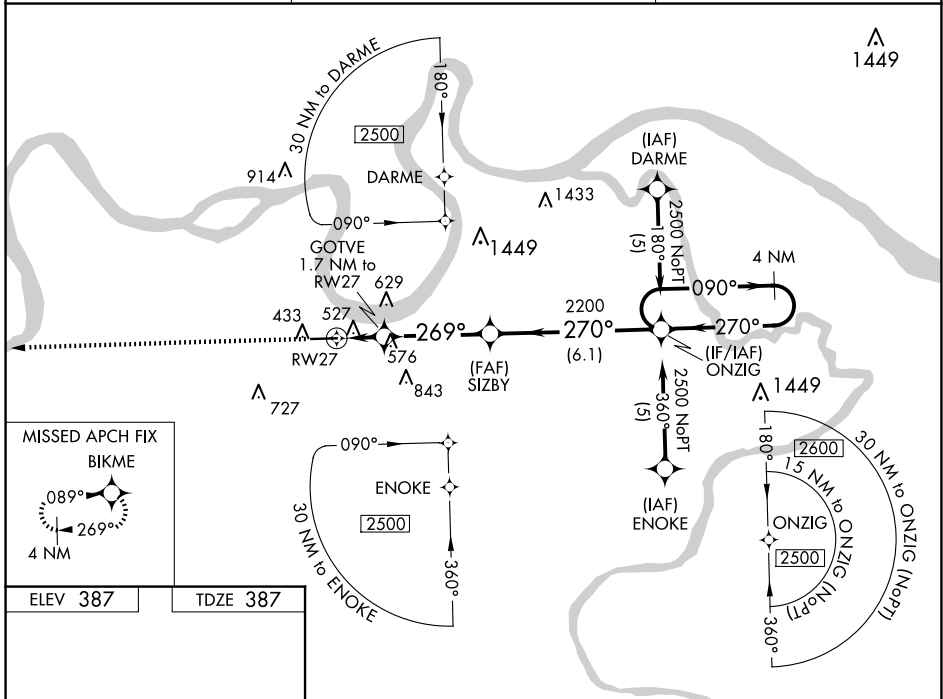
HENDERSON CITY-COUNTY (E.H.R.)

RNP APCH.

**⚠** Baro-VNAV NA when using Evansville altimeter setting. For uncompensated Baro-VNAV systems, LNAV/VNAV NA below -15°C or above 48°C. Rwy 27 helicopter visibility reduction below ¾ SM NA. When local altimeter setting not received, use Evansville altimeter setting and increase all DA 41 feet and all MDA 60 feet and LPV all Cats, LNAV/VNAV all Cats and LNAV Cats C/D visibilities ¼ mile.

MISSED APPROACH: Climb to 2500 direct BIKME and hold.

AWOS-3PT <b>118.85</b>	EVANSVILLE APP CON ★ <b>124.025 257.8</b>	UNICOM <b>122.8</b> (CTAF) <b>📻</b>
---------------------------	--	--



CATEGORY	A	B	C	D
LPV DA		733-1¼	346 (400-1¼)	
LNAV/VNAV DA		827-1½	440 (500-1½)	
LNAV MDA	840-1	453 (500-1)	840-1⅜ 453 (500-1⅜)	840-1½ 453 (500-1½)

SE-1, 15 MAY 2025 to 12 JUN 2025

SE-1, 15 MAY 2025 to 12 JUN 2025