

WAAS CH <b>86809</b> <b>W27A</b>	APP CRS <b>276°</b>	Rwy Idg <b>12000</b> TDZE <b>875</b> Apt Elev <b>896</b>
--	------------------------	--

# RNAV (GPS) Y RWY 27

CINCINNATI/NORTHERN KENTUCKY INTL (CVG)

RNP APCH-GPS.

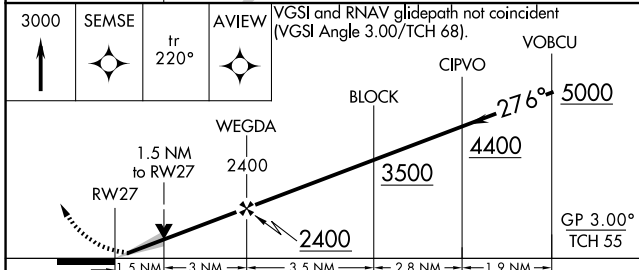
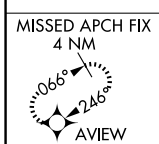
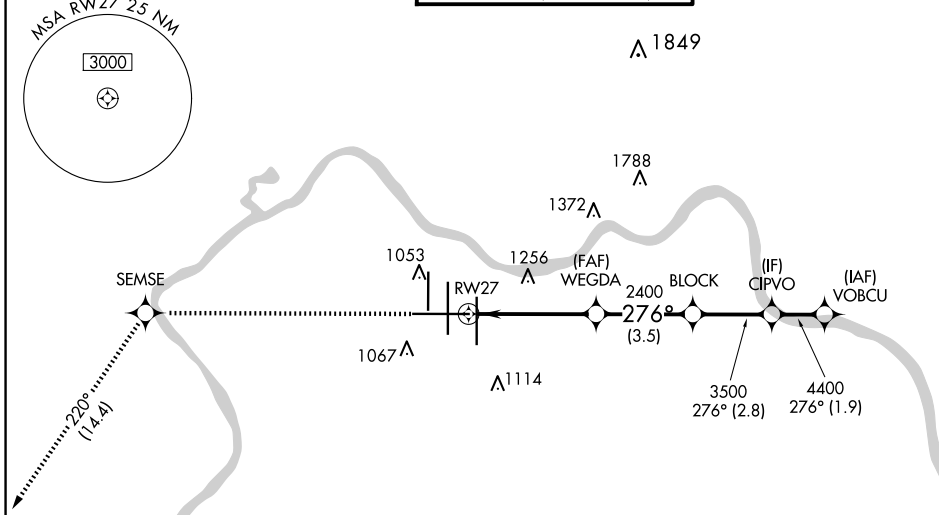
▼ For uncompensated Baro-VNAV systems, LNAV/VNAV NA below -16° C or above 54° C. For inop ALS, increase LNAV/VNAV all Cts visibility to 1 3/8 SM.  
\*\*RVR 1800 authorized with use of FD or AP or HUD to DA.

MALSR

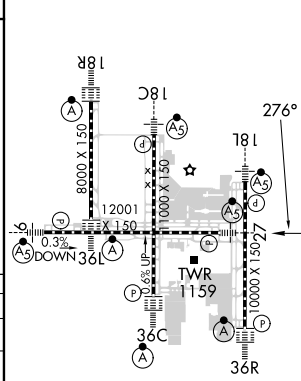


MISSED APPROACH: Climb to 3000 direct SEMSE then on track 220° to AVIEW and hold.

D-ATIS ARR <b>134.375</b> DEP <b>135.3</b>	CINCINNATI APP CON <b>119.7 363.15</b> (090°-269°) <b>123.875 363.15</b> (270°-089°)	CINCINNATI TOWER <b>118.975 360.85</b> (RWY 18L/36R) <b>118.3</b> (RWYS 18C/36C, 09/27) <b>133.325</b> (RWY 18R/36L)	GND CON <b>121.7</b>	CLNC DEL <b>127.175</b>	CPDLC
---	--	---	-------------------------	----------------------------	-------



ELEV 896	D	TDZE 875
----------	---	----------



CATEGORY	A	B	C	D
LPV DA **		1075/24	200 (200-1/2)	
LNAV/VNAV DA		1349/50	474 (500-1)	
LNAV MDA	1420/24	545 (600-1/2)	1420/60	545 (600-1/4)
CIRCLING	1460-1	564 (600-1)	1560-1 3/4 664 (700-1 3/4)	1560-2 664 (700-2)

HIRL all Rwys  
TDZ/CL all Rwys except 27

SE-1, 15 MAY 2025 to 12 JUN 2025

SE-1, 15 MAY 2025 to 12 JUN 2025