

WAAS CH <b>86826</b> <b>W05A</b>	APP CRS <b>052°</b>	Rwy Idg TDZE Apt Elev	<b>6202</b> <b>577</b> <b>577</b>
--	------------------------	-----------------------------	---

# RNAV (GPS) RWY 5

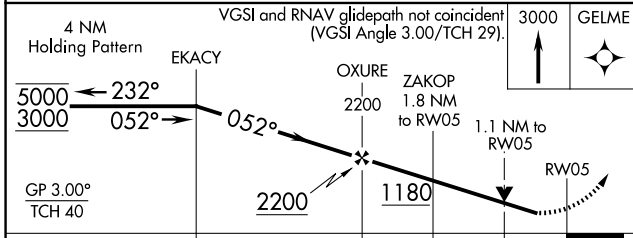
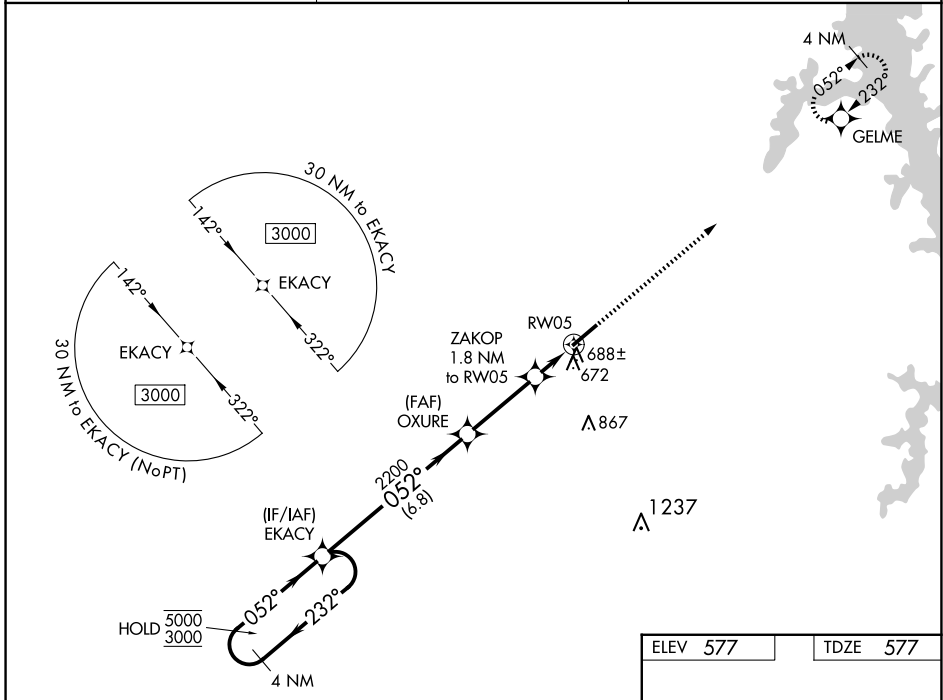
KYLE-OAKLEY FLD (CEY)

RNP APCH - GPS.

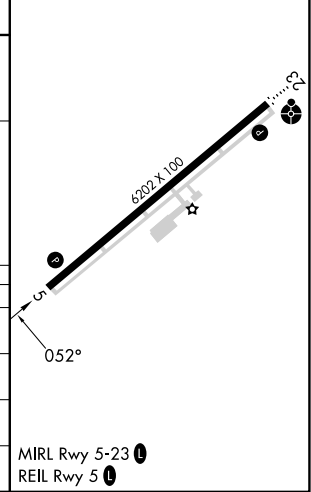
**⚠** Rwy 5 helicopter visibility reduction below  $\frac{3}{4}$  SM NA. For uncompensated Baro-VNAV systems, LNAV/VNAV NA below -16°C or above 54°C.

MISSED APPROACH: Climb to 3000 direct GELME and hold.

AWOS-3 <b>119.975</b>	MEMPHIS CENTER <b>133.65 292.15</b>	UNICOM <b>122.7 (CTAF)</b>
--------------------------	--	-------------------------------



ELEV 577	TDZE 577
----------	----------



CATEGORY	A	B	C	D
LPV DA		827- $\frac{3}{4}$	250 (300- $\frac{3}{4}$ )	
LNAV/VNAV DA		947-1	370 (400-1)	
LNAV MDA	960-1	383 (400-1)	960-1 $\frac{1}{8}$	383 (400-1 $\frac{1}{8}$ )
<b>C</b> CIRCLING	1000-1 423 (500-1)	1040-1 463 (500-1)	1040-1 $\frac{1}{2}$ 463 (500-1 $\frac{1}{2}$ )	1180-2 603 (700-2)

MIRL Rwy 5-23 **Ⓡ**  
REIL Rwy 5 **Ⓡ**

SE-1, 15 MAY 2025 to 12 JUN 2025

SE-1, 15 MAY 2025 to 12 JUN 2025